



About the Software on your Sony Notebook Computer

PCG-SR1K



NOTICE

This product contains software owned by Sony and licensed by third parties. Use of such software is subject to the terms and conditions of license agreements enclosed with this product. Software specifications are subject to change without notice and may not necessarily be identical to current retail versions.

Updates and additions to software may require an additional charge. Subscriptions to online service providers may require a fee and credit card information. Financial services may require prior arrangements with participating financial institutions.

© 2000 Sony Corporation All rights reserved.

Reproduction in whole or in part without permission is prohibited.

End User Software License Agreement

This End User Software License Agreement (the "EULA") is a legal agreement between you and Sony Corporation (hereinafter referred to as "SONY"), a corporation organized under Japanese Law, the manufacturer of your SONY computer system (the "SONY HARDWARE"). Please read this EULA carefully before installing or using the software distributed together with this EULA (the "SONY SOFTWARE"). By installing or using the SONY SOFTWARE, you agree to be bound by the terms of this EULA. You may use the SONY SOFTWARE only in connection with the use of the SONY HARDWARE. SONY SOFTWARE is licensed not sold.

Notwithstanding the foregoing, software distributed together with separate End User Software License Agreement (the "Third Party EULA"), including but not limited to Windows[®] operating system provided by Microsoft Corporation, shall be covered by the Third Party EULA.

If you do not agree to the terms of this EULA, please return the SONY SOFTWARE together with the SONY HARDWARE to the place where you obtained it.

- 1 License. This SONY SOFTWARE and the related documentation are licensed to you by SONY. This EULA allows you to use the SONY SOFTWARE for your personal use for a single SONY HARDWARE outside a network and only to make one copy of the SONY SOFTWARE in machine-readable form for back-up purposes only.
- 2 Restrictions. The SONY SOFTWARE contains copyrighted material and other proprietary material. In order to protect them, and except as permitted by applicable law, you may not decompile, reverse engineer or disassemble the SONY SOFTWARE in whole or in part. Except for the transfer of the SONY SOFTWARE together with the SONY HARDWARE and prior agreement of the recipient to be bound by the terms and conditions of this EULA, you may not sell or rent the SONY SOFTWARE and its copy to any third party.
- 3 Limited Warranty. SONY warrants the media on which the SONY SOFTWARE is recorded to be free from physical defects for a period of ninety (90) days from the date of purchase as evidenced by a copy of the receipt. During the applicable warranty period, SONY will replace free of charge such media that proved to be defective; provided they are returned properly packaged to the place where you obtained it, together with your name, address, and proof of date of purchase. SONY will have no responsibility to replace media damaged by accident, abuse, or misapplication.

The above limited warranty replaces all other representations, conditions and warranties, whether express or implied, by statute or otherwise and SONY expressly disclaims all other warranties and all conditions including, but not limited to, the implied warranties and/or conditions of satisfactory quality and fitness for a particular purpose. The terms of this limited warranty do not affect or prejudice your statutory rights as an ultimate consumer, neither do they limit or exclude any liability for death or personal injury caused by the negligence of SONY.



- 4 Termination. This EULA is effective until terminated. You may terminate this EULA at any time by destroying the SONY SOFTWARE, related documentation, and all copies thereof. This EULA will terminate immediately without notice from SONY, if you fail to comply with any provision of this EULA. Upon termination you must destroy the SONY SOFTWARE, related documentation, and all copies thereof.
- 5 Governing Law. This EULA shall be governed by and construed in accordance with the laws of Japan.

Should you have any questions concerning this EULA or this limited warranty, please refer to the Customer Service Guide on how to contact VAIO-Link.

Sony, DVgate, i.LINK™, Mavica, PictureGear, Memory Stick and the Memory Stick logo, VAIO and the VAIO logo are trademarks of Sony Corporation. Windows, the Windows 98 and the Windows 2000 logos are registered trademarks of Microsoft Corporation.

Intel, MMX, Celeron and Pentium are trademarks of Intel Corporation.

All other trademarks are trademarks of their respective owners.

Specifications are subject to change without notice.



As an ENERGY STAR Partner, Sony has determined that this product meets the ENERGY STAR guidelines for energy efficiency.

The International ENERGY STAR Office Equipment Program is an international program that promotes energy saving through the use of computers and their office equipment. The program backs the development and dissemination of products with functions that effectively reduce energy consumption. It is an open system in which business proprietors can participate voluntarily. The targeted products are office equipment such as computers, displays, printers, facsimiles and copiers. Their standards and logos are uniform among participating nations.

ENERGY STAR is an U.S. registered mark.

About the Software on Your Notebook Computer

Your Sony notebook computer is ready to help you work, play, learn, and communicate as soon as you turn it on. This section gives you an overview of the activities you can perform with your software titles.

For general information and technical assistance, please refer to your *Customer Service Guide*.

Sony software



PictureGear

Sony Electronics

Create your own environment with the Digital Image Library (photos, backgrounds, wallpapers, slide shows, etc). PictureGear is your assistant for creating and implementing personal screen savers, panoramas (combined images)... You can even animate your preferred gifs with Gif Animation Tools, create labels for all your medias with PictureGear Label Maker, or play back movies in a variety of formats.

For details, please read the PictureGear Help file.



Jog Dial Utility

Sony Electronics

The Jog Dial Utility (VAIO Action Setup) allows you to configure the Jog Dial on your computer. In this application, you can select the Sony applications, or others, that you want the Jog Dial to pilot ; you can also configure the Jog Dial to start any application, establish a dialup connection, or read an e-mail , simply by turning and pressing the Jog Dial. Finally, the Jog Dial Utility

allows you to configure your i.LINK connections, and to set a Timer that can launch any application at the time you select. See "Setting up the Jog Dial" and the Jog Dial Setup Help file for details.



VisualFlow

Sony Electronics

VisualFlow allows you to browse interactively through the contents of your Memory Sticks. VisualFlow can display Memory Stick files in a variety of ways, and allows you to play / display still images, movies or sound files within VisualFlow or with other software. For details, please read the VisualFlow Help file.



DVgate

Sony Electronics

DVgate is a kit of 3 complementary applications: DVgate Motion, DVgate Still, and DVgate Assemble.



Edit the rushes you have shot with your digital video camera recorder using this video-capture application, specially tuned for high-quality numeric movies. When connected to your camera via i.LINK™, your computer operates as an editing desk that can preview, cut and assemble your selection and save the sequences in AVI format.

Attaching a DV device to the i.LINK™ connector enables you to transfer the images you have captured to your hard drive. DVgate Still displays digital video images sent from a digital video cassette recorder or a digital video camera recorder, and captures them as still pictures on your notebook computer.

For details, please read the DVgate Help file.



Media Bar

Sony Electronics

The Media Bar allows you to play audio and video files in various formats on your hard drive. Video images are displayed in a separate Movie window, which you can move and resize (to full screen). For details, please read the Media Bar Help file.





Smart Capture

Sony Electronics

Connect a digital camera to your computer to shoot still images and video clips, which you can view or send by e-mail. The Smart Capture Finder displays images from the camera and allows you to adjust the settings or create effects.

Smart Capture enables you to capture images via i.LINK™ compatible devices or create a panorama picture using the panorama assist function.

See the chapter "Using Smart Capture" or the Smart Capture Help file for more details.



Smart Connect and Smart Connect Monitor

Sony Electronics

With Smart Connect and Smart Connect Monitor you can copy, edit or delete files on another VAIO computer (equipped with Smart Connect) connected to your computer with an i.LINK™ cable.

You can also print a document on a printer connected to another VAIO computer.



Smart Label

Sony Electronics

You can record a voice memo and shoot an image, then post the memo and the image on the desktop. The recorded file will be easily recognized thanks to the label that appears on your desktop.

For details, please refer to the Smart Label on-line help file.



Smart Publisher

Sony Electronics

With Smart Publisher, you can send memos to the Internet by e-mail and upload files to your Web pages.

For details, please read the Smart Publisher Help file.





Smart Write

Sony Electronics

As easy to use as a standard word processor, Smart Write accepts hand-written information (use your Pointing device as a pen).

When sending memos, insert an image created using Smart Capture, or record a voice memo, and sign it using Smart Write.

For details, please read the Smart Write Help file.



BatteryScope

Sony Electronics

BatteryScope is a flexible battery management system that gathers critical information from the battery in your notebook computer, processes it, and displays the information on the screen in a way that is easy to understand. See the chapter "Displaying Battery information" or the BatteryScope Help file for details.



PowerPanel

Sony Electronics

The PowerPanel utility controls the power management of your notebook computer and provides key information about system activity and battery life. Automatic power management selects the most appropriate profile, depending on the application you're working with and the conditions of use.

See the chapter "PowerPanel" or the PowerPanel Help file for details.



Sony Notebook Setup

Sony Electronics

Use the Sony Notebook Setup to confirm system information, specify preferences for system behavior, and change hardware settings for your Sony Notebook computer.

For more information, read the help file of Sony Notebook Setup.





UI Design Selector

Sony Electronics

You can change the window design of the Sony Software compatible with UI Design selector.



Product Recovery CD-ROMs

Sony ITE

The Product Recovery CD-ROMs allow you to reinstall your system, the software titles that were shipped with your computer and the bundled device drivers if they are corrupted or accidentally erased.

Reinstalling an individual device driver may correct a problem you are experiencing with your computer.

! You can only use this Recovery CD-ROM on the Sony notebook you purchased and not on any other Sony PC or other manufacturer's PC.



Operating System and other pre-installed software



Windows® 2000

Microsoft Corporation

Microsoft® Windows® 2000 makes your computer work better by integrating tightly with the Internet and networks and providing better system performance and easier system diagnostics and maintenance. With Windows® 2000, your system plays better as well with support for the latest graphics, sound, and multimedia technologies, easy addition and removal of peripheral devices, and the convergence of the TV and PC in your home. This exciting new operating system builds on the groundbreaking features introduced with Windows® NT. At the same time, Windows® 2000 maintains the best support for older Windows-based applications and technologies. For questions and technical assistance, go online to:

<http://www.microsoft.com/support/>



Internet Explorer 5.0

Microsoft Corporation

Internet Explorer is the Internet browser of Microsoft. The Setup Wizard configures your computer to connect automatically to the service provider of your choice. A full e-mail package enables you to send and receive mail—including attached files—across the Internet. NetMeeting, Outlook Express and Microsoft Chat are just some of the components bundled with Internet Explorer 5.0. A complete online tutorial helps new users become comfortable using the Internet. For questions and technical assistance, go online to:

<http://www.microsoft.com/support/>



Adobe® Acrobat® Reader 4.0

Adobe Systems Incorporated

Acrobat Reader software allows you to view, navigate, and print electronic documents in Adobe Portable Document Format (PDF), an open file format that is intended to preserve the fidelity of documents created on all major computer platforms. Once Acrobat Reader is installed, you can

open and view PDF files from within your Web browser by clicking on a PDF file embedded in a HTML file. You quickly see the first page while the rest of the document is being downloaded. For questions and technical assistance, go online at

<http://www.adobe.com>



QuickTime 4.1

Apple

QuickTime is the Apple technology that makes video, sound, music, 3D and virtual reality come alive for your Internet browser and Windows.

For further information, see the web site at:

<http://www.apple.com/quicktime/>



Customizing Your Notebook Computer

The following sections briefly describe how to change the main settings of your notebook computer. Between other things, you will learn how to prepare your modem for use, how to use and customize the look of your Sony software and utilities, and you will be introduced to the different display modes available through NeoMagic®.

For more detailed information, you can also refer to the Help systems of the software.



Changing the window design with UI Design Selector

You can change the window design of Sony software compatible with UI Design Selector.

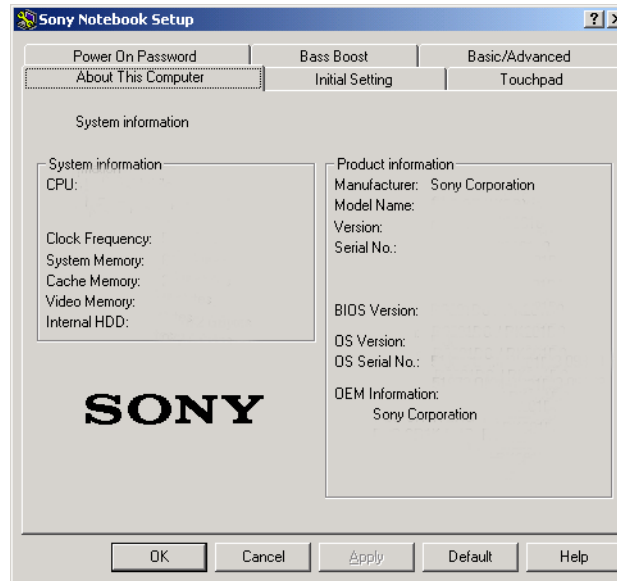
- 1 Click Start, point Settings, then click Control Panel.
- 2 Open UI Design Selector.
- 3 Click on << or >> and select the design you like.
- 4 Click Apply.
- 5 The UI Design Selector window design changes, to give you a preview of the design you chose for the Sony Software.
- 6 To try another design, click on << or >>.
- 7 Once you are satisfied with your choice, click OK.
UI Design Selector closes and changes the window design of Sony software as you selected.



Sony Notebook Setup

To display the Sony Notebook Setup screen:

- 1 Click the Start button on the Windows® taskbar.
- 2 In Programs, select Sony Notebook Setup. The “Basic” window will appear; you can then enhance the features by clicking the “Basic / Advanced” tab.



- 3 Select the tab for the item you want to change.
- 4 After you finish, click OK.

Notebook Setup Tabs

For more information about each option, click Help on the Notebook Setup screen to display the help file.

<i>Tab</i>	<i>Description</i>
About This Computer	Display system information, including memory capacity, serial number, and BIOS version.
Initial Setting	Select the drive and device order you wish to use for loading the operating system. You can specify the hard drive as well as other drives inserted into your computer. You can change the volume of the sounds while the operating system is loading.
Touchpad	When you connect an optional mouse to your computer, you can disable your touchpad. You can also customize your mouse settings using the mouse utility.
Bass Boost	Turn the Bass Boost function on / off (only with headphones). You can also check the effect of the Bass Boost function by selecting a sample from "soundfile" and playing it.
Power On Password	Set the password to secure your computer.
Basic/Advanced	Not in use on this model.



PowerPanel


Controlling Power Management

The PowerPanel utility controls the power management of your notebook computer and provides key information about system activity and battery life. In combination with BatteryScope, the automatic power management selects the most advantageous profiles, or lets you customize the profiles you choose, according to your own needs, with the goal of extended battery life.

PowerPanel main features

- ❑ Automatic Profile Selection (APS) based on the currently active application
- ❑ Ability to select special Power Profiles manually from the menu
- ❑ Ability to edit and create new profiles
- ❑ A toolbar shared with BatteryScope
- ❑ Works in harmony with Windows settings.

To activate PowerPanel

When you start the computer, the PowerPanel  icon appears in the task tray by default.

- ❑ When pointing on the PowerPanel icon, you will see a tooltip with the active Power Management profile.
- ❑ You can select a power profile from the menu or a Power Management profile by right-clicking this icon.
- ❑ You can use the PowerPanel's toolbar as well:
 - 1 Right click the taskbar at the bottom of the screen.






- 2 Select Toolbars from the pop-up menu, then click PowerPanel.
The PowerPanel will appear on the task bar (you can change it into a floating window by dragging and dropping it on your desktop).
- 3 Click the button you want to set.
The appropriate Power Management command will be activated.









Power Management Profiles

PowerPanel provides several predefined power management profiles. Each profile consists of a group of specific power management settings that are designed to meet specific power management goals, ranging from maximum power management to no power management.

Main preset profiles




Icon	Description
	Maximum Battery Life – Provides power saving features to give you maximum battery life and good performance. It reduces the brightness of the display and puts it into System Suspend mode after a specified time period.
	More Maximum Battery Life – Provides maximum power saving features to give you maximum battery life with lower performance.
	Maximum Performance – Provides the best system performance while still conserving power.
	AC Power – The power management state when AC power is in use. PowerPanel automatically loads the AC profile unless you disable this feature.
	Power Management Off – Turns off all power management features such as System Idle, System Suspend and Hibernation modes.

Other preset profiles

<i>Icon</i>	<i>Description</i>
	Word Processing – Optimizes power management with longer timeouts on the hard disk and display screen. You can also establish settings for LCD (Video) Standby, Hard Disk Standby, and System Suspend to optimize power management for your system.
	Spreadsheet – Reduces the LCD brightness to “medium”, as your software doesn’t require higher performance. The sleep timer is activated.
	Presentation – Keeps the display on at all times while it conserves power. This option is ideal for slide show presentations. You can establish settings for LCD (Video) Standby, Hard Disk Standby, and System Suspend to optimize power management for your system.
	Communications – Extends battery life by initiating a quick display time-out. You can also establish settings for LCD (Video) Standby, Hard Disk Standby, and System Suspend to optimize power management for your system.
	Games – Disables the display and the Hard Disk Spindle Down timer.
	Camera – Optimizes performance and power requirements for camera usage.

Power Management Commands

PowerPanel provides power management commands that you can use to activate specific power management functions and to control power for a specific device. You might use these commands when you want to override a profile setting or initiate an immediate action, such as putting the system into Video Standby mode before the Video Standby timer expires.

<i>Icon</i>	<i>Description</i>
	System Idle - This mode is convenient if you don't need to use your computer for a short period. The hard disk and the video display enter a low power state and the CPU clock and processor stop. To return the system to the active state, press any key or the power switch on your computer.
	System Suspend - Puts the system into System Suspend mode, a power management state that saves the state of the system and peripheral devices in memory (RAM). Power consumption reduces to a minimum, and the system remains on. To return the system to the active state, press any key or the power switch on your computer.
	System Hibernation - Provides for the lowest level of power consumption. The system writes the state of the system and peripheral devices to the hard disk and turns off the system power. To return the system to the original state, use the power switch to turn on power.

Automatic Profiles Selection (APS)

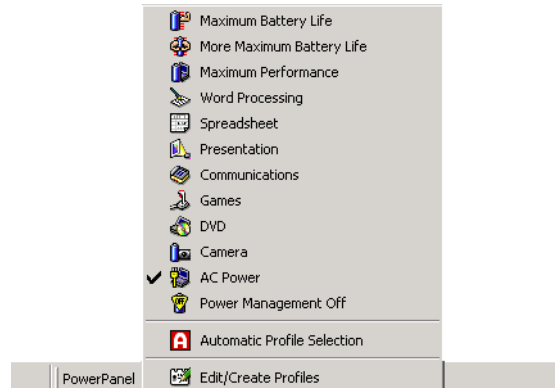
A Power Profile is a set of timer values for a variety of system devices. PowerPanel automatically selects the profile associated with the application you're using and changes profiles as you switch between applications.

The Power Management lets your system enter energy saving modes by levelling some energy consuming parameters, such as LCD brightness, or hard disk activity.

Choosing Automatic Profiles

By right-clicking the PowerPanel icon on the task tray, you can choose "Automatic Profile Selection": this automatically enables PowerPanel set the power management settings.

You can also display the power management settings by clicking the first icon on the PowerPanel toolbar:



Customizing PowerPanel

You can customize the PowerPanel toolbar to suit your portable computing needs. You can edit the pre-defined Power Management settings or create new profiles. Please refer to PowerPanel Help for more information.



Displaying Battery Information

You can display detailed information for the batteries used in your computer. The following sections briefly describe how to display your computer's general battery information. You can also refer to the BatteryScope Help for more detailed information.

Activating BatteryScope

To activate BatteryScope

When you start your computer, the BatteryScope  icon appears in the taskbar by default.


- ❑ When pointing on the BatteryScope icon, you will see a ToolTip indicating the total capacity remaining in the battery and the estimated time until the battery fully discharges.
- ❑ You can display a detailed battery information window by double-clicking the icon.
- ❑ You can use the BatteryScope toolbar as well:
 - 1 Right click the taskbar at the bottom of the screen.
 - 2 Select Toolbars from the pop-up menu, then click BatteryScope (you can change it into a floating window by dragging and dropping it on your desktop).

You can also view battery gauges on the shared PowerPanel and BatteryScope toolbar.

- ❑ **Percentage indicator**
Displays the percentage of the remaining capacity.
 - ❑ **Time indicator**
Displays estimated time (hours/minutes) remaining before the battery fully drains, also referred to as the time-to-empty.
-

Battery Icon Descriptions



Battery icon	Battery status
	Discharging
	Fully charged
	Charging
	No battery



Discharging



Fully charged



Charging



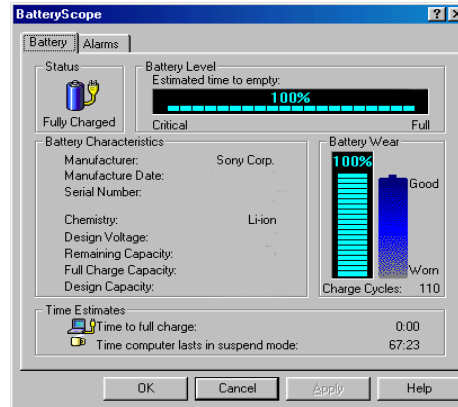
No battery



Displaying Detailed Battery Information

You can obtain detailed information about the battery.

- ❑ Double-click the battery icon on the task tray to display the BatteryScope window. The screen appears displaying the Battery Tab, which contains information such as the estimated time-to-empty and charging time.



To customize the BatteryScope application bar and alarm system

You can customize the BatteryScope toolbar to suit your portable computing needs as well as to modify the alarm settings. Please refer to the BatteryScope Help for more information.

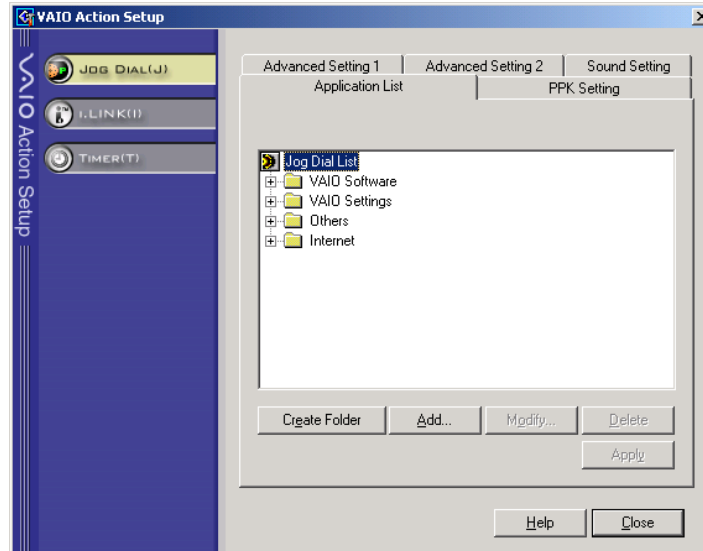
Setting up Jog Dial

The VAIO Action Setup software enables you to start your favorite software with the Jog Dial.

This section briefly describes how to use VAIO Action Setup. You can also refer to the VAIO Action Setup Help for more detailed information.

Using the VAIO Action Setup screen

Right-click the Jog Dial Icon in the task tray and select Jog Dial Setup (VAIO Action Setup). The VAIO Action Setup screen appears.



Modifying the Jog Dial application list

Click on Jog Dial at the left of the dialog, and then select element(folder or application) you want to modify in the Application list. For more information on how to add/ modify/ delete elements in the Jog Dial list, read the VAIO Action Setup Jog Dial online help


Using the internal timer

Click on Timer at the left of the dialog, and then select the application you want to link to the Timer. You can use the internal timer to start software at a specific time. It can start applications even when the computer is off or in System Hibernation Mode. For more information, read the VAIO Action Setup online help.

Setting up i.LINK

Click on i.LINK at the left of the dialog, and then select one of the available tabs. For more information on the different available settings, read the VAIO Action Setup online help.



 You can turn off the notebook's LCD display checking the External Display box in CRT/Projector and removing the check from the LCD box in Internal Display.

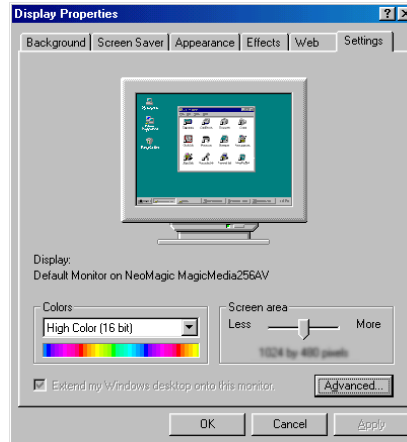
With this setting, you can adjust the vertical frequency of the display with the refresh rate slider, but the resolution slider will not work.

If you select CRT/Projector and turn off the LCD, you can use the Refresh Rate slider to change the display's horizontal frequency. This setting can be made only for CRT display. If you select Independent Display Timing, you can change both the resolution and the refresh rate.(see page).

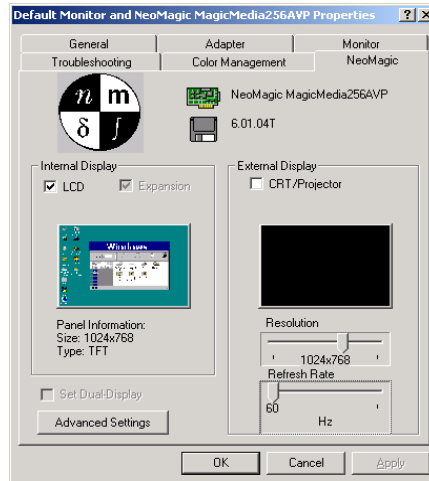
Selecting the Display Mode


When you connect an external display, you can toggle the display mode between the computer LCD and external displays.

- 1 Click the Start button on the Windows® taskbar.
- 2 Point to Settings and click Control Panel.
- 3 Click Display.
- 4 Click the Settings tab. Then click Advanced.



- 5 Click the NeoMagic® tab.



 Depending on the types of computer displays and projectors you are using, you may not be able to display the computer's LCD and external display simultaneously.


You cannot select Independent Display Timing when the display is set to True Color (24 bit).

6 Select the type of display:

External (CRT/Projector)	Displays an external computer display or RGB connected projector that is connected to the Monitor connector on your computer.
Internal (LCD)	Displays the LCD of your computer.

7 Click OK. If you have made changes the System settings change dialog box appears. Select Yes to restart Windows.

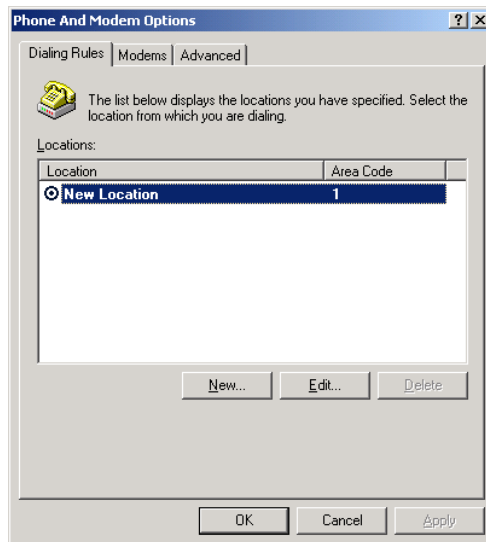
8 If you have not made changes, click OK to close the Display properties screen.

 * Before applying new country settings, please make sure your phone line is disconnected from your VAIO notebook.

Configuring the modem for use

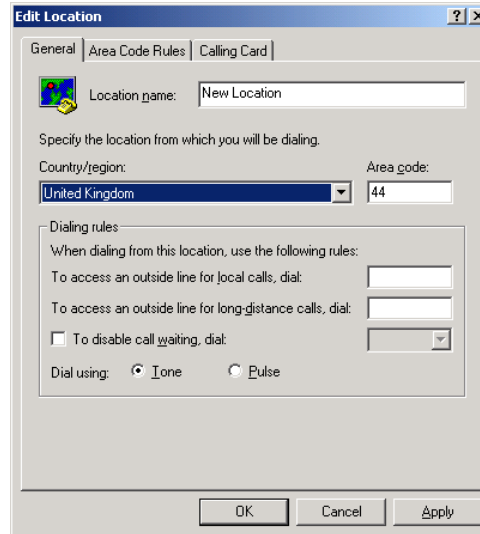
Before you can start using your internal modem*, or each time you use your modem while travelling, make sure that the country of the active location defined in Phone and Modem Options matches the country you are dialing from.

- 1 Click Start, point to Settings, and click Control Panel.
- 2 Double-click Phone and Modem Options.




- 3 Double-click the currently selected location on the Dialing Rules tab. If more than one location is available, double-click the location that is highlighted.

- The Edit Location dialog appears. Check the country/region setting, and make sure it matches the place you are dialing from.



- If you modified your location settings, click Apply on the Dialing Rules tab, and then click OK.

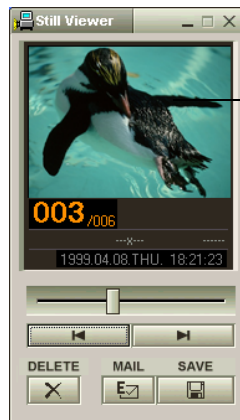
Using Smart Capture

 You can capture still images from i.LINK™ compatible devices. For connecting the device, refer to "Connecting a Digital Video Camera Recorder" in your Notebook Computer user guide. Also consult the Smart Capture on-line help for information on installation and use.


You can use Smart Capture to shoot still images and record video clips from a digital camera connected to your computer.

Capturing a still image

- 1 Launch Smart Capture from the Start menu, in "Programs / Smart Capture".
- 2 The finder window will appear, displaying the image of the subject.
- 3 Adjust the focus on the subject you want to shoot.
- 4 Click the CAPTURE button on the Smart Capture window. The Still Viewer window will appear with the image you shot in the Still Image Display area.



Captured still image

- 5 To end Smart Capture click the  button in the top right corner of the window.

🔗 See the Smart Capture software on-line help for more information on installation and use.

You can capture the following still images sizes : 640 x 480, 320 x 240, 160 x 120, 80 x 60, and 40 x 30 pixels.

When capturing a small resolution image (i.e. 80 x 60 or 40 x 30 pixels) , the displayed image on the finder window may appear blurred.

A gap may appear when a rapid-moving object is displayed. However this is not a malfunction.

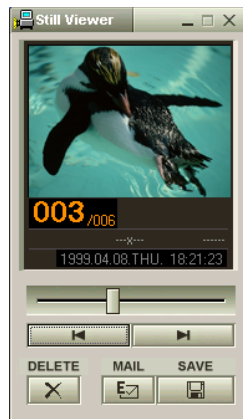
You can create a panorama picture by using PictureGear 2.5SE or higher.


See the software on-line help for information on installation and use.

You can capture still images and video clips from a digital video camera using Smart Capture.

Displaying the captured images in Still Viewer



From the Start menu, select Programs, Smart Capture and click Still Viewer. You can display, save or delete your images or send them by e-mail.

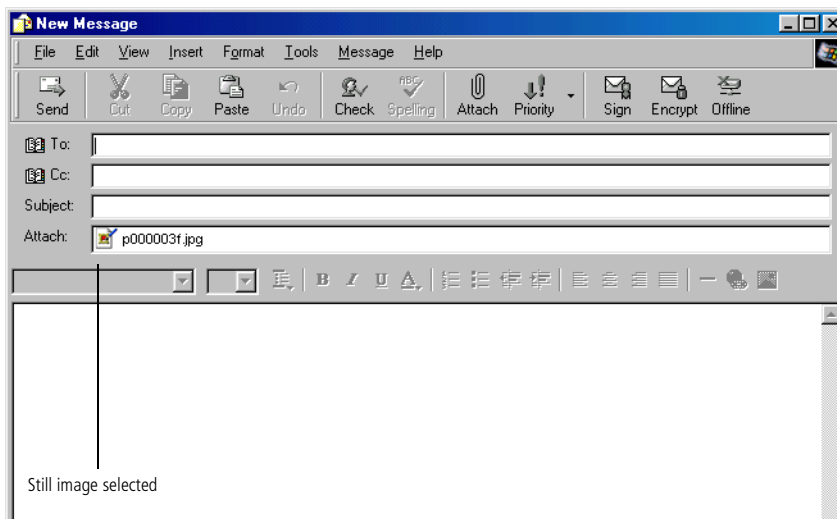


To end Still Viewer click the  button.

✎ You need to set up MAPI when using the e-mail software. See the manual supplied with the e-mail software for more information on sending e-mails.

To send a still image via e-mail

- 1 Click the Start button on the Windows® taskbar.
- 2 Point to Programs and click Smart Capture.
- 3 Click Still Viewer.
- 4 Select the still image you want to send via e-mail, using  or .
- 5 Click MAIL. Your e-mail window will appear with the selected file attached to your message.

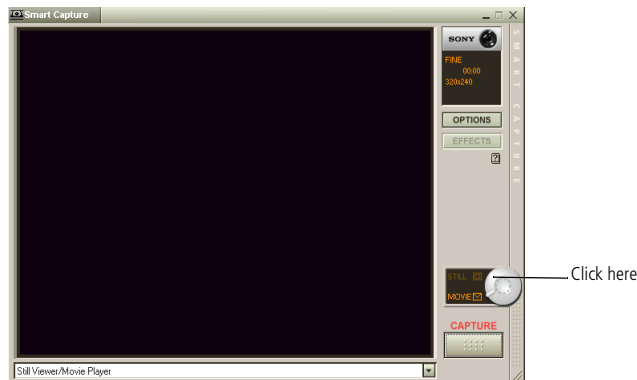


- 6 Send the e-mail.

Shooting a video clip

You can use Smart Capture to shoot (capture) video clips with a Video Camera connected to your computer, as well as play them or send them via e-mail.

- 1 Launch Smart Capture.
Select MOVIE using the Switch Capture Mode Button.



- 2 The image will appear in the finder. Turn the camera towards the subject.
- 3 Adjust the image.
- 4 Click the CAPTURE button to shoot a video clip (you can shoot up to 60 seconds, according to the settings you chose in the Recording options section).
- 5 Click the CAPTURE button when finished.
The Movie Player window will open and the captured video clip will appear in the Movie Player window.

- 📷 You can shoot video clips in the following formats :
Non-compressed :
 - ❑ Video 160 x 120, 24 bits, max. 10 frames/sec.
 - ❑ Audio PCM, 11.025 kHz, 16 bits, monophonicCompressed :
 - ❑ Video MPEG1 160 x 112, maximum of 30 frames/sec (effective maximum equivalent to 10 frames/sec).
 - ❑ Audio MPEG1, 44.1 kHz (effective maximum equivalent to 11.025 kHz), monophonic.

A gap may appear when a rapid-moving object is displayed.
However this is not a malfunction.



— Captured video clip

- 6 Click ▶ to playback the images. Click || to pause, ■ to stop playback.
- 7 To end Smart Capture, click .

To playback captured video clips

- 1 Start the Movie Player software.



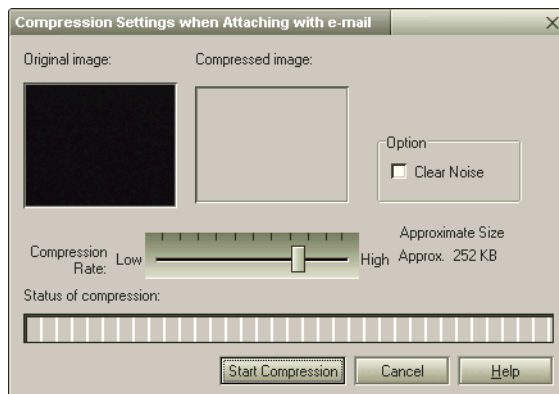
- 2 Click ▶ to playback the images. Click || to pause, ■ to stop playback.
- 3 To end Movie Player click

See the manual supplied with the e-mail software for more information on sending e-mails.


To send a video clip via e-mail

If you shoot a video clip in a low resolution format, you can send it by e-mail.

- 1 Click the Start button on the Windows[®] taskbar.
- 2 Point to Program and then Smart Capture.
- 3 Click Movie Player.
- 4 Click MAIL.
- 5 The Compression Settings window will open.
Choose the compression rate by moving the slider.




- 6 Click Start Compression. When compression is completed, a window message will ask you if you want to attach the file to your e-mail.
- 7 Accept and send the e-mail.

 You can only use these Recovery CD-ROMs on the Sony notebook you purchased and not on any other Sony PC or other manufacturer's PC!

To perform a system recovery, the notebook should not be docked (port replicator).

For more information about using your DVD-ROM / CD-ROM drive, read the corresponding chapter in this user guide or the manual supplied with your peripheral .

 The recovery process takes between 10 to 20 minutes to complete.

Using the Product Recovery CD-ROMs

The following sections describe how to use the Recovery CD-ROMs.

You will find a set of two Recovery CD-ROMs in your Product Recovery Pack:

- ❑ The System Recovery CD-ROM (vol. 1 of 2) and System Recovery CD-ROM (vol. 2 of 2)

The system recovery process allows you to reinstall an image of the hard disk as it was when you started using your notebook computer.


Use the System Recovery CD in the following cases:

- ❑ In the event of a serious system crash
- ❑ If you want to modify the size of your partitions
- ❑ Reinstall an individual driver if a device is not functioning properly

! Applying a system recovery means that you will lose all your data stored on your C: drive (and your D: drive if you modify partition settings). Therefore, before applying a system recovery, copy your data to an external disk. If Windows® does not allow you to do that, try to copy your data from the DOS-prompt (to a floppy, a zip drive, an additional hard disk, etc..).

! CAUTION: make sure that your computer is connected to AC (not the batteries) before you attempt a system recovery.

! CAUTION: when the recovery is performed, you must remove the recovery CD-ROM from the drive before restarting the computer. If the CD-ROM is still in the drive, you will restart a recovery process.


 Please note that the Windows® 2000 system recovery allows you to select the size of the C: partition when starting a recovery. When recovering your system, you also need to choose between FAT32 and NTFS for the file management system you want to use. The default option is FAT32.

Performing a system recovery

Use this option only when your system is seriously damaged, e.g. if Windows® does not work any more, or your PC behaves abnormally, etc. The system recovery will completely reinstall the originally configured system on your C: drive. Your D: drive data will not be deleted if you choose to keep the same partition settings. If you decide to modify the size of your partitions, the existing data on both drives (C: and D:) will be deleted.

Procedure for starting a system recovery

- 1 Take the Recovery CD-ROMs.
- 2 Turn on your computer (using AC power only) and insert the System Recovery CD-ROM in the CD-ROM drive.
- 3 Shut down your computer (press the power switch and hold it for more than four seconds).
- 4 Wait ten seconds and turn your computer back on.
- 5 On the first screen that appears, click "OK".
- 6 The System Recovery CD screen appears, asking you what to do with the partitions on your hard disk. At this stage you have 3 options available.

 By default, your notebook computer's file management system is FAT32. Windows® 2000 systems allow you to format your files using either FAT32 or NTFS. You can change your FAT32 file system to NTFS at any time. However, make sure you fully understand the concept of file management system under Windows® 2000 Professional before switching from FAT32 to another file management system.


For more information, carefully read the Windows® 2000 documentation and/or ask your system or network administrator.

Recovering the system without changing partitions

- 1 Press **C** to keep your current partitions. This is the recommended option if you do not need to modify the partition sizes and if you want to restore your C: drive while keeping the data on your D: drive untouched.
- 2 Press **G** to proceed with the system recovery.
- 3 Select the file system you want to use: FAT32 or NTFS.
- 4 Follow the instructions on the screen.
- 5 When the recovery process is finished, remove the Recovery CD-ROM from the drive and press any key to restart your notebook computer.

Recovering the system with modified partition sizes

- 1 Press **P** to modify partitions on your notebook computer. Select this option only if you need change the sizes of your partitions. Please note that this option will delete all existing data both on the C: and D: drives before starting the recovery.
- 2 On the next screen, press **Y** to confirm the deletion of the current partitions.
- 3 The next screen displays a selection of sizes for your new C: drive. According to the option you select, the recovery process will create 1 or 2 partitions on the hard disk. (For more details on partitions, see the chapter "About the Partitions of your Hard Disk Drive".)
- 4 Confirm your selection on the next screen and wait until the new partitions are created and the notebook computer reboots.
- 5 Then follow the steps described in the previous section "Recovering the system without changing partitions"

 Please note that the Windows® 2000 system recovery allows you to select the size of the C: partition when starting a recovery. When recovering your system, you also need to choose between FAT32 and NTFS for the file management system you want to use. The default option is FAT32.

Aborting the recovery process

The recovery process always warns you when the decision you are asked to take cannot be undone. Whenever possible, the recovery screens allow you either to go back to the previous screen, or to abort the recovery process.

If your computer does not start the system recovery utility.

Please refer to your Customer Service Guide to contact VAIO-Link.

Reinstalling a device driver

Some applications or peripherals require specific drivers which you won't find in the Windows® drivers folder. To help you find or restore typical drivers needed by your pre-installed applications, you can use the System Recovery CD-ROM (vol. 2 of 2).

- 1 First check whether the driver you plan to reinstall is on the System Recovery CD-ROM. Only device drivers that are not delivered with Windows® can be found in the Drivers directory.
- 2 Check all underlying sub-directories for the appropriate driver.
- 3 Next, launch the "Add/Remove Hardware" wizard (click Start, point to Settings / Control Panel, and then double-click on Add/Remove Hardware) to install the appropriate device.

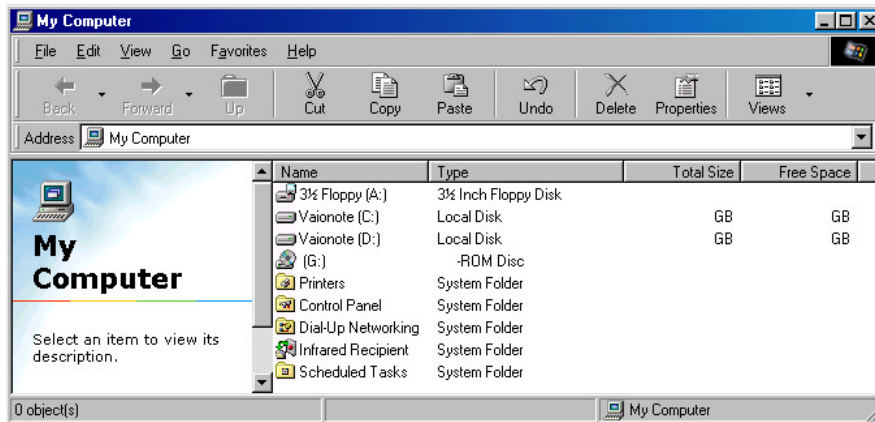
While you can perform a system recovery and change the partition settings in order to have one C: drive only, this option is not recommended for using video editing applications like DVgate. For more information, see the DVgate online help (Recommended settings topic).

About the Partitions of your Hard Disk Drive

In My Computer or Windows Explorer, you may have noticed the availability of two drives (C: and D:): your hard disk drive comes from the factory with 2 logical partitions: this does not mean that your computer contains two physical hard disks.

Default disk space allocation

When you start using your notebook computer, your C: drive contains all the files required by Windows and other pre-installed software, while the D: drive comes empty. The D: drive is the ideal storage space for all your documents, especially big ones like digital motion pictures captured with DVgate.



How to use your partitioned drives

In order to avoid mishandling or malfunction of your software and files, please take the following precautions:

- ❑ To optimize data storage, use the C: drive to install new applications, and save all your documents to the D: drive. Moreover, doing so will prevent the loss of your documents in the case you need to perform a system recovery.
- ❑ Do not try to add, delete, or resize partitions unless you really need it. Changing partition settings might delete all your files on the hard disk.
- ❑ If you need to perform a system recovery, but do not want to lose all the data stored on your hard disk, copy all the files you want to keep on the D: drive. During the system recovery process, choose to keep the current partition information. Doing so will keep your D: drive unchanged after the recovery process. For more information on the recovery process, see the chapter "Using the Product Recovery CD-ROMs".
- ❑ If you do need to change the size of your partitions, you can do so by performing a system recovery. In this case, it is important to note that all the data on your hard disk will be deleted. If you need to keep existing files, be sure to backup them up before performing the system recovery. For more information on the recovery process, see the chapter " Using the Product Recovery CD-ROMs".

