

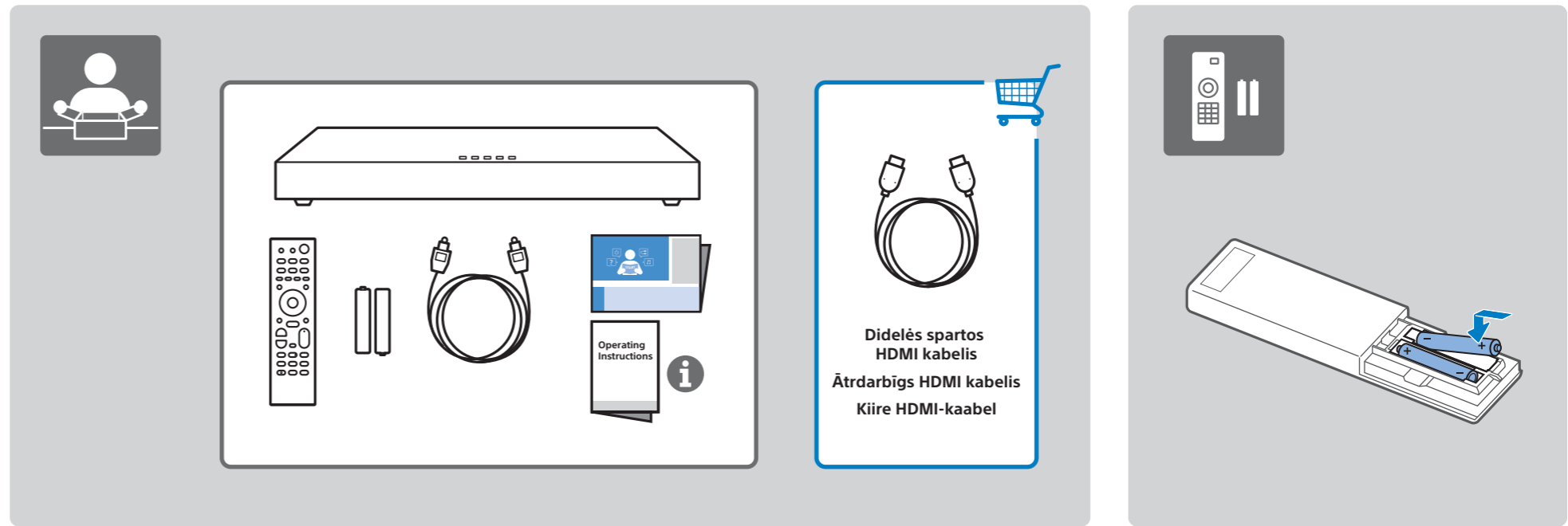
SONY



HT-XT2

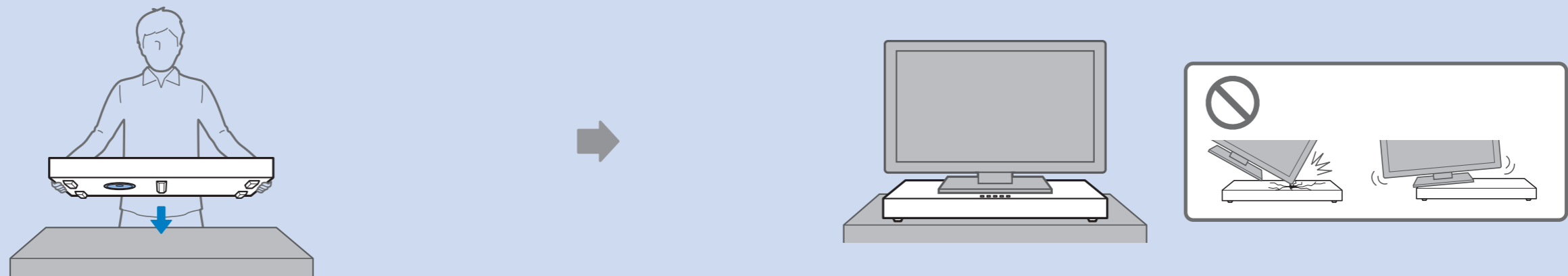
©2016 Sony Corporation

4-585-709-22(1) (LT-LV-EE)

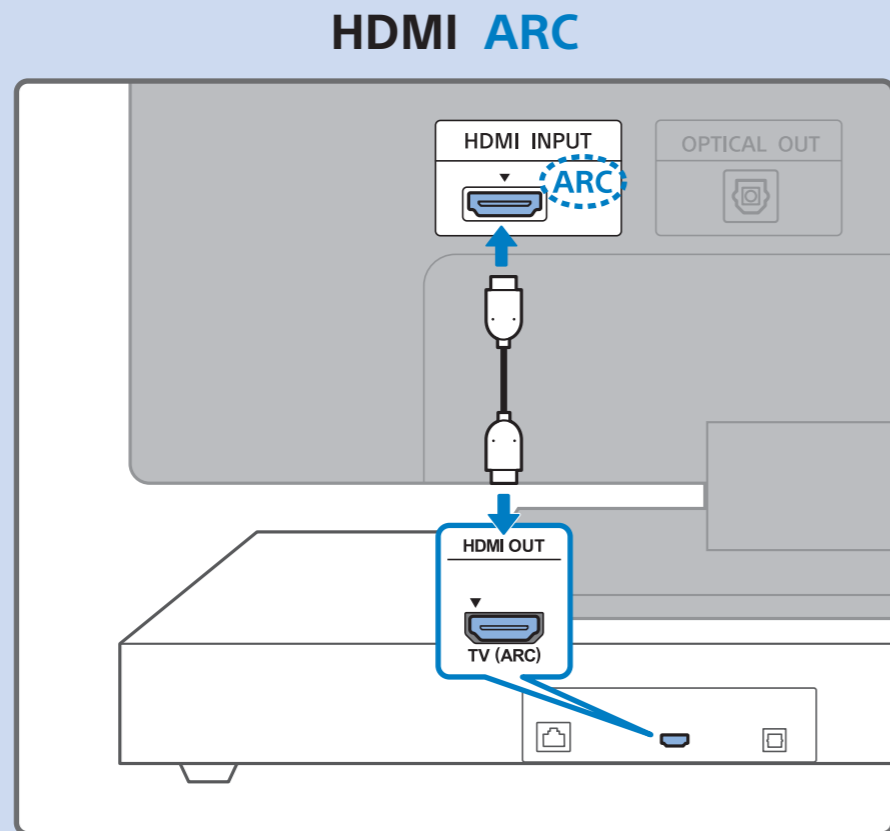


Didelės spartos  
HDMI kabelis  
Ātrdarbīgs HDMI kabelis  
Kiire HDMI-kaabel

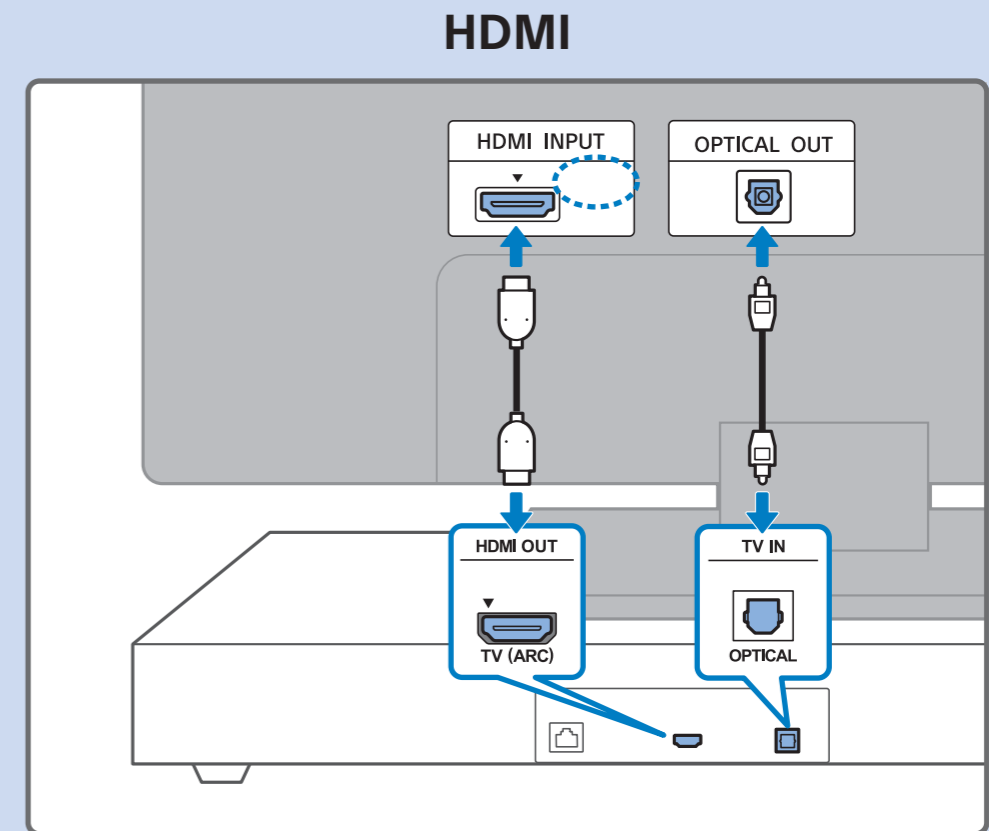
1



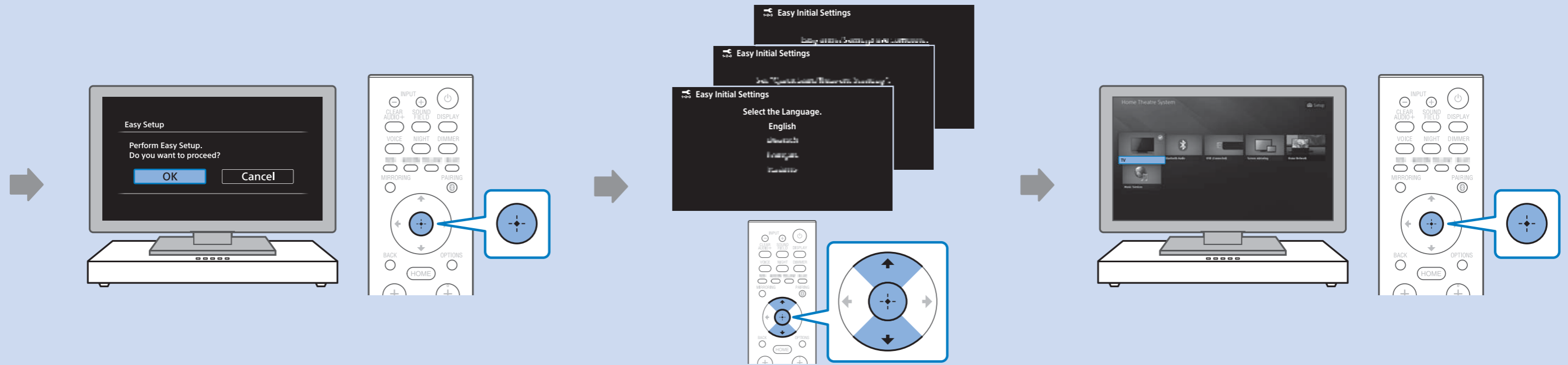
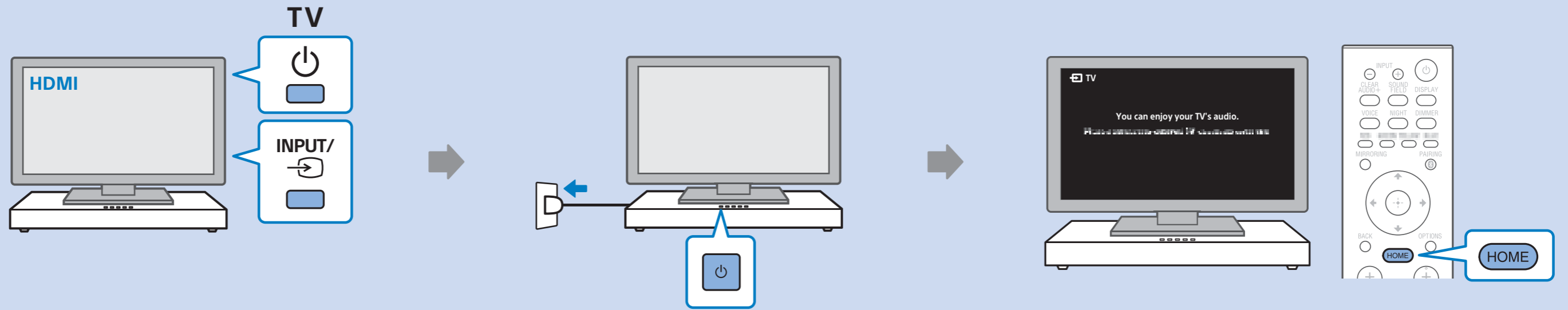
2



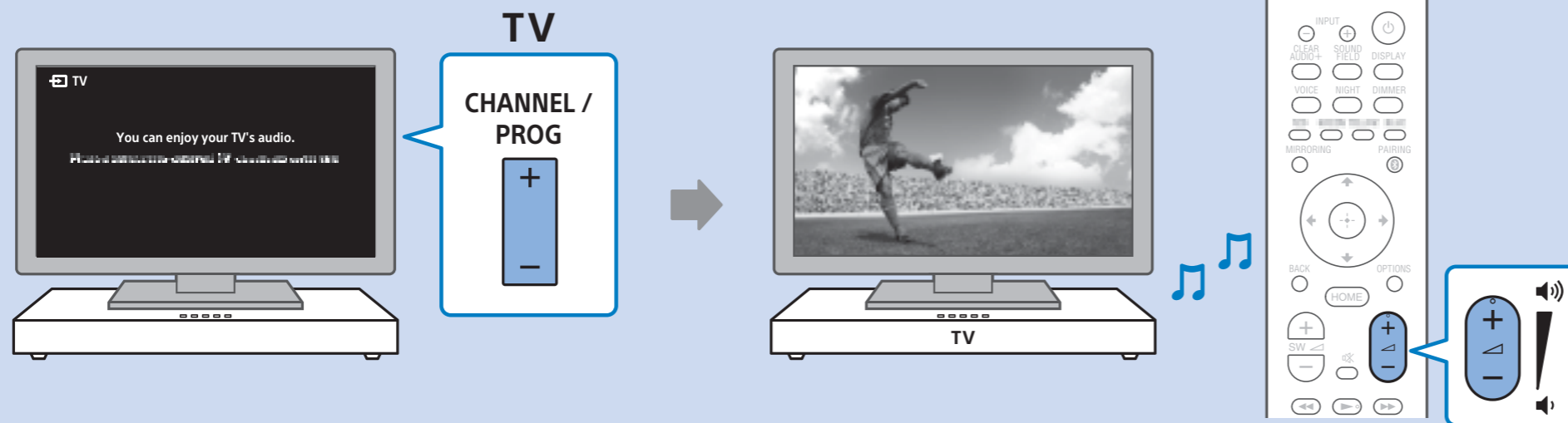
ARBA  
VAI  
VĪI



3



4



**SongPal Link**

**Wireless Multi-room**

Operating Instructions

This block contains information about the SongPal Link feature. It includes the 'SongPal Link' logo, the 'Wireless Multi-room' logo with an illustration of a multi-room audio system, and a document icon labeled 'Operating Instructions'. A QR code is located in the bottom right corner of this section.