

About the software on your Sony notebook

PCG-FX301





Read this first

Notice

This product contains software owned by Sony and licensed by third parties. Use of such software is subject to the terms and conditions of license agreements enclosed with this product. Software specifications are subject to change without notice and may not necessarily be identical to current retail versions. Updates and additions to software may require an additional charge. Subscriptions to online service providers may require a fee and credit card information. Financial services may require prior arrangements with participating financial institutions.

© 2001 Sony Corporation. All rights reserved.

Reproduction in whole or in part without permission is prohibited.

Sony, DVgate, i.LINK™, PictureGear, MovieShaker, Smart Capture, UI Design Selector, VisualFlow, VAIO and the VAIO logo are trademarks of Sony Corporation. The Windows and Windows Millennium Edition logo are registered trademarks of Microsoft Corporation.

All other trademarks are trademarks of their respective owners.

Specifications are subject to change without notice.

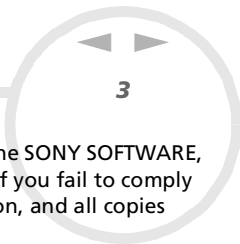
End user software license agreement

This End User Software License Agreement (the **EULA**) is a legal agreement between you and Sony Corporation (hereinafter referred to as **Sony**), a corporation organized under Japanese Law, the manufacturer of your Sony computer system (the **SONY HARDWARE**). Please read this EULA carefully before installing or using the software distributed together with this EULA (the **SONY SOFTWARE**). By installing or using the SONY SOFTWARE, you agree to be bound by the terms of this EULA. You may use the SONY SOFTWARE only in connection with the use of the SONY HARDWARE. SONY SOFTWARE is licensed; not sold.

Notwithstanding the foregoing, software distributed together with separate End User Software License Agreement (the **Third Party EULA**), including but not limited to Windows® operating system provided by Microsoft Corporation, shall be covered by the Third Party EULA.

If you do not agree to the terms of this EULA, please return the SONY SOFTWARE together with the SONY HARDWARE to the place where you obtained it.

- 1. License.** This SONY SOFTWARE and the related documentation are licensed to you by Sony. This EULA allows you to use the SONY SOFTWARE for your personal use for a single SONY HARDWARE outside a network and only to make one copy of the SONY SOFTWARE in machine-readable form for back-up purposes only.
- 2. Restrictions.** The SONY SOFTWARE contains copyrighted material and other proprietary material. In order to protect them, and except as permitted by applicable law, you may not decompile, reverse engineer or disassemble the SONY SOFTWARE in whole or in part. Except for the transfer of the SONY SOFTWARE together with the SONY HARDWARE and prior agreement of the recipient to be bound by the terms and conditions of this EULA, you may not sell or rent the SONY SOFTWARE and its copy to any third party.
- 3. Limited Warranty.** Sony warrants the media on which the SONY SOFTWARE is recorded to be free from physical defects for a period of ninety (90) days from the date of purchase as evidenced by a copy of the receipt. During the applicable warranty period, Sony will replace free of charge such media proved to be defective; provided they are returned properly packaged to the place where you obtained it, together with your name, address, and proof of date of purchase. Sony will have no responsibility to replace media damaged by accident, abuse, or misapplication. The above limited warranty replaces all other representations, conditions and warranties, whether express or implied, by statute or otherwise and Sony expressly disclaims all other warranties and all conditions including, but not limited to, the implied warranties and/or conditions of satisfactory quality and fitness for a particular purpose. The terms of this limited warranty do not affect or prejudice your statutory rights as an ultimate consumer, neither do they limit or exclude any liability for death or personal injury caused by the negligence of Sony.



4. Termination. This EULA is effective until terminated. You may terminate this EULA at any time by destroying the SONY SOFTWARE, related documentation, and all copies thereof. This EULA will terminate immediately without notice from Sony, if you fail to comply with any provision of this EULA. Upon termination you must destroy the SONY SOFTWARE, related documentation, and all copies thereof.

5. Governing Law. This EULA shall be governed by and construed in accordance with the laws of Japan.

Should you have any questions concerning this EULA or this limited warranty, please refer to the Customer Service Guide on how to contact VAIO-Link.

Energy Star

As an Energy Star Partner, Sony has determined that this product meets the Energy Star guidelines for energy efficiency. The **International Energy Star Office Equipment Program** is an international program that promotes energy saving through the use of computers and their office equipment. The program backs the development and dissemination of products with functions that effectively reduce energy consumption. It is an open system in which business proprietors can participate voluntarily. The targeted products are office equipment such as computers, displays, printers, facsimiles and copiers. Their standards and logos are uniform among participating nations.

Energy Star is a U.S. registered mark.





About the software on your notebook

Your Sony notebook is ready to help you work, play, learn, and communicate as soon as you turn it on. This section gives you an overview of the activities you can perform with the software installed on your notebook.

Sony software

DVgate



Sony Electronics

DVgate is a kit of 3 complementary applications: DVgate Motion, DVgate Still, and DVgate Assemble. This collection makes it easy to select and edit digital video clips, then bring them together into a professional-looking home video. Use i.LINK™ to connect your digital video camera, and the computer operates as an editing desk that can capture, preview, cut and assemble your selection and save the sequences in AVI and MPEG1 formats. DVgate Still displays digital video images sent from a digital video cassette recorder or a digital video camera recorder, and saves them as graphic files on your hard drive



Memory Stick Formatter



Sony Electronics

Memory Stick Formatter is a special software for formatting Memory Sticks™. Use this software whenever you reformat Memory Sticks™. Moreover, you may be able to reformat Memory Sticks™ that can not be identified as drive on Windows by using this software. Memory Stick Formatter supports Memory Sticks with the following capacities: 4MB, 8MB, 16MB, 32MB, 64MB and 128MB.

When you format Memory Sticks with this software, all data on the Memory Stick will be lost. If necessary, take a backup of your data before formatting.

MovieShaker



Sony Electronics

MovieShaker[®] creates personal movies - complete with transitions, special effects, background music, and text. All you do is import your clips, pick the tone you want and MovieShaker[®] does the rest. You can also choose to take control and produce your very own movie. You choose the exact clips order, special effects, and transitions. You can also import your own music and MovieShaker[®] will automatically match the length of the song to the length of your movie.

OpenMG Jukebox



Sony Electronics

OpenMG is a copyright protection technology developed by Sony Corporation and designed to allow recording and playback of digital music data on a personal computer. Once the data is encrypted and recorded onto the hard disk, OpenMG technology allows it to be played back on the PC but prevents unauthorized distribution. The purpose of OpenMG technology is to create an environment in which larger quantities of high-quality music can be distributed without subsequent unauthorized distribution of the music files.

Open MG Jukebox is the software element within the OpenMG system that encrypts and manages music files either downloaded to a personal computer by using the EMD services or adopted (or created) from your own CD or the Internet.

PictureGear



Sony Electronics

Create your own environment with the Digital Image Library (photos, backgrounds, wallpapers, slide shows, etc). PictureGear is your assistant for creating and implementing personal screen savers, panoramas (combined images)... You can even animate your preferred gif files with Gif Animation Tools, create labels for all media with PictureGear Label Maker, or play back movies in a variety of formats. You can also create albums from your favourite images and upload them to a Web page..

Smart Capture



Sony Electronics

Connect a digital camera to your computer to shoot still images and video clips, which you can view or send by e-mail. The Smart Capture Finder displays images from the camera and allows you to adjust the settings or create effects. Smart Capture enables you to capture images via i.LINK™ compatible devices or create a panorama picture using the panorama assist function. The final panorama will be created in PictureGear, using the individual snapshots made in Smart Capture.

Smart Connect



Sony Electronics

With Smart Connect you can copy, edit or delete files on another VAIO computer (equipped with Smart Connect) connected to your computer with an i.LINK™ cable. You can also print a document on a printer connected to another VAIO computer..

UI Design Selector



Sony Electronics

You can change the window design of the Sony software compatible with UI Design Selector.

VAIO System Information



Sony Electronics

Thanks to VAIO System Information (Start - VAIO - Assistance - VAIO System Information), you can always check the **product** (model name, serial number, BIOS version, OS version and OS serial number) and the **system information** (CPU, clock frequency, system memory and cache memory) of your notebook.

VisualFlow



Sony Electronics

VisualFlow allows you to browse interactively through the contents of your Memory Sticks (optional), your hard drive, or any other drive on your computer. VisualFlow can display Memory Stick files in a variety of ways, and allows you to play / display still images, movies or sound files within VisualFlow or with other software.

Product Recovery CD-ROMs



Sony Corporation

The Product Recovery CD-ROMs allow you to reinstall the system, the software shipped with your computer and the bundled device drivers if they are corrupted or accidentally erased. Reinstalling an individual device driver may correct a problem you are experiencing with your computer, without you having to recover the entire system.

! You can only use the Recovery CD-ROMs on the Sony notebook you purchased, and not on any other Sony PC or other manufacturer's PC.

Operating system and other pre-installed software

Windows® Millennium Edition



Microsoft Corporation

Microsoft® Windows® Millennium Edition makes your computer work better by integrating tightly with the Internet and networks and providing better system performance and easier system diagnostics and maintenance.

With Windows® Millennium Edition, your system takes better advantage and has improved support of the latest graphics, sound, and multimedia technologies. Easy addition and removal of peripheral devices, and the convergence of the TV and PC in your home are also featured.

This exciting operating system is built on the groundbreaking features introduced with Windows® 98. At the same time, Windows® Millennium Edition maintains the best support for older Windows-based applications and technologies. For questions and technical assistance, go online to:

<http://support.microsoft.com/directory>

Internet Explorer 5.5



Microsoft Corporation

Internet Explorer is the Microsoft Internet browser allowing you to surf the World Wide Web. The Setup Wizard configures your computer to connect automatically to your service provider. A full e-mail package enables you to send and receive mail - including attached files - across the Internet. NetMeeting, Outlook Express and Microsoft Chat are just some of the components bundled with Internet Explorer 5.5. Internet Explorer 5.5 also includes 128-bit encryption, the highest possible level of protection for all your Internet communications, including credit card use and financial transactions. A complete online tutorial helps new users become comfortable using the Internet. For questions and technical assistance, go online to:

<http://support.microsoft.com/directory>

Adobe® Acrobat® Reader 4.1



Adobe Systems Incorporated

Acrobat® Reader software allows you to view, navigate, and print electronic documents in Adobe Portable Document Format (PDF), an open file format that is intended to preserve the conformity of documents created on all major computer platforms. Once Acrobat® Reader is installed, you can open and view PDF files from within your Web browser by clicking on a PDF file embedded in an HTML file. You quickly see the first page while the rest of the document is being downloaded. For questions and technical assistance, go online to

<http://www.adobe.com>

Real Entertainment Center



Real Entertainment Center contains two software programs: RealPlayer and RealJukebox.

RealNetworks - RealPlayer

RealPlayer is the RealNetworks video and audio player, which lets you access 2,500 radio stations featuring music, news and sports.

For further information, see the website at:

<http://www.real.com>

RealNetworks - RealJukebox

RealJukebox is your personal music management system. RealJukebox lets you build, manage, and play your digital music library on your personal computer.

For further information, see the website at:

<http://www.real.com>

QuickTime 4.1.2



Apple

QuickTime is the Apple technology that makes video, sound, music, 3D and virtual reality come alive for your Internet browser and Windows.

For further information, see the website at:

<http://www.apple.com/quicktime>

WinDVD



InterVideo, Inc.

InterVideo Inc.'s WinDVD is a simple-to-use DVD player. WinDVD combines all the features you would expect to find on a standard consumer DVD player, in addition to some very advanced functionalities, such as full VCD 2.0 support, full precision video decoding, a choice of user interfaces, and video display options. You can play DVD movies, interactive DVD titles, MPEG video content, Video and audio CDs. WinDVD automatically determines the type of disk in the DVD drive and uses the correct playback method.

For questions and technical assistance, go online to:

<http://www.intervideo.com>

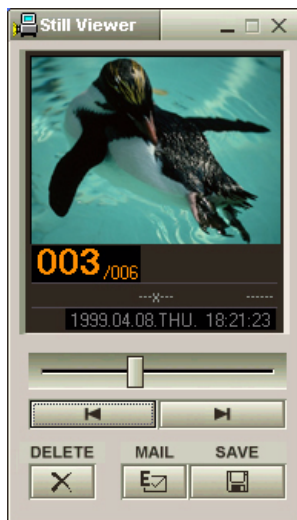
Using Smart Capture

You can use Smart Capture to shoot still images and record video clips from a digital camera connected to your computer.

Capturing still images

You can capture still images from i.LINK™ compatible devices.

To capture still images, proceed as follows:



- 1 Connect an i.LINK™ compatible device to your notebook.
- 2 Launch **Smart Capture** from the **Start** menu, in **Programs / Smart Capture / Smart Capture**.
The **Finder** window appears, displaying the image of the subject.
- 3 Adjust the focus on the subject.
- 4 Click the **Capture** button in the **Smart Capture** window.
The **Still Viewer** window appears with the image you shot in the **Still Image Display** area.
- 5 To end **Smart Capture** click the **X** button in the top right corner of the window.

Displaying captured images in Still Viewer

From the **Start** menu, select **Programs / Smart Capture** and click **Still Viewer**. You can display, save or delete your images or send them by e-mail.


To end **Still Viewer**, click the  button.

- ★ You can capture still images in the following sizes: 640 x 480, 320 x 240, 160 x 120, and 80 x 60 pixels.
- ★ When capturing a small resolution image (i.e., 80 x 60 pixels), the displayed image on the **Finder** window may appear blurred.
- ★ A gap may appear when a rapid-moving object is displayed. However, this is not a malfunction.
- ★ You can create a panorama picture by using **PictureGear 2.5SE** or higher.
- ★ You can capture still images and video clips from a digital video camera using **Smart Capture**.

Sending still images via e-mail

To send still images via e-mail, proceed as follows:


- 1 Click the **Start** button on the **Windows®** taskbar.
- 2 Point to **Programs** and click **Smart Capture**.
- 3 Click **Still Viewer**.
- 4 Select the still image you want to send via e-mail, using **◀** or **▶**.
- 5 Click **Mail**.
Your e-mail window appears with the selected file attached to your message.
- 6 Send the e-mail.

 You need to set up MAPI (Messaging Application Program Interface) when using the e-mail software. MAPI is a Microsoft® Windows program interface that enables you to send e-mails from within a Windows application and to attach the document you are working on to the e-mail note.

Shooting video clips

With a video camera connected to your computer you can use **Smart Capture** to capture video clips, as well as play them or send them via e-mail.

To capture video clips, proceed as follows:

- 1 Launch **Smart Capture**.
- 2 Select **Movie** using the **Switch Capture Mode** button.
The image appears in the **Finder**.
- 3 Turn the camera towards the subject.
- 4 Adjust the image.
- 5 Click the **Capture** button to shoot a video clip (you can shoot up to 60 seconds, according to the settings you chose in the **Recording options** section).
- 6 Click the **Capture** button when finished.
The **Movie Player** window appears, it contains the captured video clip.
- 7 Click ► to playback the images. Click || to pause, ■ to stop playback.
- 8 To end **Smart Capture**, click .

 You can shoot video clips in the following formats:

Non-compressed:

- Video 160 x 120, 24 bits, max. 10 frames/sec.
- Audio PCM, 11.025 kHz, 16 bits, monophonic

Compressed:

- Video MPEG1 160 x 112, maximum of 30 frames/sec.).
- Audio MPEG1, 44.1 kHz (effective maximum equivalent to 11.025 kHz), monophonic.

A gap may appear when a rapid-moving object is displayed. However, this is not a malfunction.

Sending video clips via e-mail

If you shoot a video clip in a low resolution format, its size will be reasonable and can therefore be sent by e-mail.

To send video clips via e-mail, proceed as follows:

- 1 Click the **Start** button on the **Windows**[®] taskbar.
- 2 Point to **Programs** and then **Smart Capture**.
- 3 Click **Movie Player**.
- 4 Click **Mail**.
The **Compression Settings** window opens.
- 5 Choose the compression rate by moving the slider.
- 6 Click **Start Compression**.
When compression is completed, a window message asks you if you want to attach the file to your e-mail.
- 7 Accept and send the e-mail.

Customizing your notebook

The following sections briefly describe how to change the main settings of your notebook. Among other things, you will learn how to prepare your modem for use, how to use and customize the look of your Sony software and utilities, etc.

Configuring your modem

Before you can start using your internal modem, or each time you use your modem while travelling, make sure that the country of the active location defined in **Modems** matches the country you are dialing from.

To configure your modem, proceed as follows:

- 1 Click **Start**, point to **Settings**, and click **Control Panel**.
- 2 Double-click **Modems**.
The **Modems Properties** dialog box appears.
- 3 Select the **General** tab.
- 4 Click **Dialing Properties**.
- 5 Check the country/region settings, and make sure it matches the place you are dialing from.
- 6 If you modified your location settings, click **Apply**, and then click **OK**.



Before applying new country settings, please make sure your phone line is disconnected from your VAIO notebook.

Changing your window design

You can change the window design of Sony software compatible with **UI Design Selector**.

To change the window design using UI Design Selector, proceed as follows:

- 1 Click **Start**, point **Settings**, then click **Control Panel**.
- 2 Double-click **UI Design Selector**.
The **UI Design Selector** dialog box appears.
- 3 Click on << or >> and select the design you like.
- 4 Click **Apply**.
The **UI Design Selector** window design changes, to give you a preview of the design you chose for the Sony software.
- 5 To try another design, click on << or >>.
- 6 Click **OK** once you are satisfied with your choice.
UI Design Selector dialog box disappears and changes the window design of Sony software as you selected.

Managing power

You can manage the power settings of your notebook via the power options properties in the Control Panel.

To manage the power of the notebook, proceed as follows:

1 Click **Start**.

2 Select **Settings**.

3 Click **Control Panel**.

If you see a short list of icons, click **View all Control Panel options** in the left panel to display all the possible Control Panel icons.

4 Double-click the **Power Options** icon.

The **Power Options Properties** dialog box opens, it contains 5 tabs.

Power Schemes: in this page you can select the power scheme with the most appropriate settings for your computer.

Alarms: you can set an alarm to warn you when you reach a certain power level.

Power Meter: this window lets you see what the remaining battery power is.

Advanced: in this page you can set some behaviors. E.g., you can decide what happens when you close the lid of the portable computer:

- nothing,
- the computer enters Standby mode,
- the computer enters Hibernate mode,
- the power turns off.

Hibernate: here you can decide whether you want to enable the Hibernate mode. When your computer hibernates, it stores whatever it has in memory on your hard disk and then shuts down. When your computer comes out of Hibernate mode, it returns to its previous state.

5 Click **Apply** and **OK**.

Selecting display modes

This notebook uses the ATI video controller. You can select which display is used when the computer is connected to an external display.

To select a display, proceed as follows:

- 1 Click the **Start** button, select **Settings** and then click **Control Panel**.
The **Control Panel** appears.
- 2 Double-click **Display**.
The **Display Properties** dialog box appears.
- 3 Click the **Settings** tab.
- 4 Click the **Advanced** button.
The **Rage Mobility-M1 AGP Properties** dialog box appears.
- 5 Click the **Displays** tab to set the display settings.
If you cannot see the movie on the external display, set the external display to **Primary**. Select the **Displays** tab and deselect the **Monitor or TV** button to change it from **Secondary** to **Primary**.

You may not be able to display the notebook LCD screen and an external display or a projector at the same time, depending on the types of computer displays and projectors you are using.

Before turning on the computer, turn off the peripheral devices.

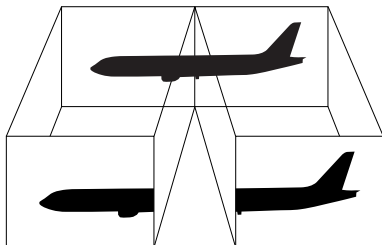
If you want more information on the ATI video controller, click on the ATI icon in the taskbar and click Help.

Using the Dual Display function

The dual display function allows you to distribute portions of your desktop across separate displays. For example, if you have an external monitor attached to the monitor connector, your LCD display and the monitor can function as a single desktop.

You can move the cursor from one display to the other. This allows you to drag objects, such as an open application window or a toolbar, from one display to the other.

This configuration of a single desktop distributed across separate displays, is referred to as a virtual desktop.



 Certain software may not be compatible with Dual Display settings.

Make sure that your computer does not enter Standby or Hibernate mode while you are using Dual Display mode, otherwise your computer may not return to Normal mode.

If you set different colours on each display, do not divide one single window on two displays, otherwise your software may not work properly.

Set fewer colours or a lower resolution for each display.

Be aware that DVD playback is not possible with Dual Display function.

Selecting the Dual Display mode

To select the Dual Display mode, proceed as follows:

- 1 Click the **Start** button on the Windows® taskbar.
- 2 Point to **Settings** and click **Control Panel**.
- 3 Double-click the **Display** icon.
- 4 Click the **Settings** tab.
- 5 Click the display marked **2** and click **Yes**.

Setting the colors and resolution for each display

You can set the display colors and resolution for each display that is part of a virtual desktop.

To set the display colors and resolution for each display, proceed as follows:

- 1 Click the **Start** button on the Windows® taskbar.
- 2 Point to **Settings** and click **Control Panel**.
- 3 Double-click the **Display** icon.
- 4 Click the **Settings** tab.
- 5 Click on the display you wish to change (1 or 2).
- 6 Select an option from the **Colors** list when you want to change colors.
- 7 Use the slider in the **Screen area** to adjust the resolution.
- 8 Click **OK**.

Customizing the virtual desktop

You can customize dual the display mode by changing the position of the two monitors comprising the virtual desktop.

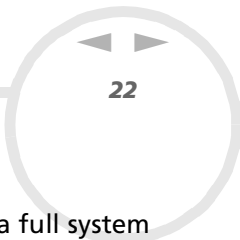
To customize dual display mode, proceed as follows:

- 1 Click the **Start** button on the Windows® taskbar.
- 2 Point to **Settings** and click **Control Panel**.
- 3 Double-click the **Display** icon.
- 4 Click the **Settings** tab.
- 5 Drag the monitor icons to match the physical arrangement of your monitors. The two monitor icons must be connected to create a virtual desktop.
- 6 Click **OK** to apply the change.

Deactivating the dual display function

To deactivate the Dual Display function, proceed as follows:

- 1 Click the **Start** button on the Windows® taskbar.
- 2 Point to **Settings** and click **Control Panel**.
- 3 Double-click the **Display** icon.
- 4 Click the **Settings** tab.
- 5 Right-click the display you wish to deactivate (1 or 2).
- 6 Deselect **Enabled**.
This enables the Dual Display.



Using the product recovery CD-ROMs

The set of Product Recovery CD-ROMs supplied with your computer allow you to perform a full system recovery, and help you reinstall individual applications or the device drivers manually.

The system recovery process allows you to reinstall an image of the hard disk as it was before you started using your notebook.

Perform a **System Recovery** in the following cases:

- In the event of a serious system crash.
- If you want to modify the size of your partitions.

Perform an **Application Recovery** if you need to:

- Reinstall an individual driver if a device is not functioning properly.
- Reinstall an individual application if you have problems running it.

Performing a system recovery

Use this option only when your system is seriously damaged, e.g., if Windows® does not work any longer, or your PC behaves abnormally, etc. The system recovery will completely reinstall the originally configured system on your C: drive. Your D: drive data will not be deleted if you choose to keep the same partition settings. If you decide to modify the size of your partitions, the existing data on both drives (C: and D:) will be deleted.

When performing a system recovery, you can opt for a **Standard Recovery** or an **Advanced Recovery**.

When choosing a **Standard Recovery**, you leave the current partition sizes untouched. When choosing an **Advanced Recovery**, you can adapt the partition sizes.

 You can only use these product recovery CD-ROMs on the Sony notebook you purchased and not on any other Sony PC or other manufacturer's PC!

The recovery process can last up to sixty minutes.

- ! Applying a system recovery means that you will lose all your data stored on your C: drive (and your D: drive if you modify partition settings).
- ! Make sure that your computer is connected to AC (not the batteries) before you attempt a system recovery.
- ! When the recovery is performed, you must remove the recovery CD-ROM from the drive before restarting the computer. If the CD-ROM is still in the drive, you will restart a recovery process.



Performing a standard system recovery

To perform a standard system recovery, proceed as follows:

- 1 Take the system recovery CD-ROM.
- 2 Turn on your computer (using AC power only) and insert the system recovery CD-ROM into the DVD-ROM drive.
- 3 Shut down your computer (**Start/Shut Down/Shut Down**).
- 4 Wait ten seconds.
- 5 Turn your computer back on.
- 6 On the first screen that appears, press **S (Standard)**.
The system recovery CD screen appears, asking you if you are really sure you want to continue.
- 7 Click **Y (Yes)**.
- 8 You will be asked again whether you are really sure to continue.
- 9 Confirm.

Performing an advanced system recovery

To perform an advanced system recovery, proceed as follows:

- 1 Take the system recovery CD-ROM.
- 2 Turn on your computer (using AC power only) and insert the system recovery CD-ROM into the DVD-ROM drive.
- 3 Shut down your computer.
- 4 Wait ten seconds.
- 5 Turn your computer back on.
- 6 On the first screen that appears, press **A (Advanced)**.
The system recovery CD screen appears, asking you what to do with the partitions on your hard disk. At this stage 3 options are available.
 - Recovering the system without changing partitions.
 - Recovering the system with modified partition sizes.
 - Aborting the recovery process.

Recovering the system without changing partitions

To recover the system without changing partitions, proceed as follows:

- 1 Press **C** to keep your current partitions.
This is the recommended option if you do not need to modify the partition sizes and if you want to restore your C: drive while keeping the data on your D: drive untouched.
- 2 Press **G** to proceed with the system recovery.
- 3 Follow the instructions on the screen.
- 4 When the recovery process is finished, remove the product recovery CD-ROM from the drive.
- 5 Press any key to restart your notebook.



Recovering the system with modified partition sizes

To recover the system with modified partition sizes, proceed as follows:

- 1 Press **P** to modify partitions on your notebook.
Select this option only if you need to change the sizes of your partitions.
 - 2 On the next screen, press **Y** to confirm the deletion of the current partitions.
The next screen displays a selection of sizes for your new C: drive. According to the option you select, the recovery process will create 1 or 2 partitions on the hard disk.
 - 3 Confirm your selection on the next screen.
 - 4 Wait until the new partitions are created and the notebook reboots.
 - 5 Press **G** to proceed with the system recovery.
 - 6 Follow the instructions on the screen.
 - 7 When the recovery process is finished, remove the product recovery CD-ROM from the drive.
 - 8 Press any key to restart your notebook.
- ! Please note that this option will delete all existing data both on the C: and D: drives before starting the recovery.

Aborting the recovery process

The recovery process always warns you when the decision you are asked to take, cannot be undone. Whenever possible, the recovery screens allow you either to go back to the previous screen, or to abort the recovery process.

Performing an application recovery

The application recovery utility allows you to reinstall individual applications. Reinstalling a program can fix the problems encountered if it does not correctly run anymore.

To perform an application recovery, proceed as follows:

- 1 Take the **last** product recovery CD-ROM.
- 2 Turn on your computer (using AC power only) and wait until Windows has booted.
- 3 Insert the product recovery CD-ROM into the DVD-ROM drive.
- 4 Open the DVD-ROM drive through **Windows Explorer** and click on the **Apps** directory.
- 5 Open the directory that corresponds to the application you want to recover.
- 6 Double-click the **Setup** program.
- 7 Follow the instructions in the **Installer**.

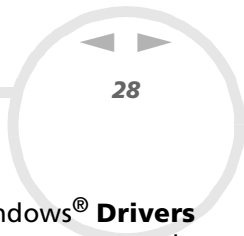


You must run the last product recovery CD-ROM from Windows.

The application will not run from DOS.

When performing an application recovery, you do not lose data on your hard disk.

In most cases, it is advised to uninstall an application before reinstalling it.



Reinstalling a device driver

Some applications or peripherals require specific drivers which you will not find in the Windows® **Drivers** folder. To help you find or restore typical drivers needed by your pre-installed applications, you can use the last product recovery CD-ROM.


To reinstall a device driver, proceed as follows:

- 1 First check whether the driver you want to reinstall is on the **last** product recovery CD-ROM. Only device drivers that are not delivered with Windows® can be found in the **Drivers** folder.
- 2 Check all underlying sub-directories for the appropriate driver.
- 3 Next, launch the **Add/Remove Hardware** Wizard (click **Start**, point to **Settings/Control Panel**, and then double-click **Add/Remove Hardware** to install the appropriate device).

Using partitioned drives

In **My Computer** or **Windows Explorer**, you may have noticed the availability of two drives (C: and D:): your hard disk drive comes from the factory with 2 logical partitions: this does not mean that your computer contains two physical hard disks.

When you start using your notebook, your C: drive contains all the files required by Windows and other pre-installed software, while the D: drive is empty. The D: drive is the ideal storage space for all your documents and files, especially big ones like digital motion pictures captured by DVgate.

 Although you can perform a system recovery and change the partition settings in order to have one C: drive only, this option is not recommended for using video editing applications like DVgate.

To optimize data storage, use the C: drive to install new applications, and save all your documents and files to the D: drive. Moreover, doing so will prevent the loss of your data in the case you need to perform a system recovery.

Do not try to add, delete, or resize partitions unless you really need to. Changing partition settings might delete all your files on the hard disk.

If you need to perform a system recovery, but do not want to lose all the data stored on your hard disk, copy all the files you want to keep on the D: drive. During the system recovery process, choose to keep the current partition information. Doing so will keep your D: drive unchanged after the recovery process.

If you do need to change the size of your partitions, you can do so by performing a system recovery. In this case, it is important to be aware that all data on your hard disk will be deleted. If you need to keep existing files, be sure to back them up before performing the system recovery.