

About the Software on your Sony Notebook Computer

PCG-F801



NOTICE

This product contains software owned by Sony and licensed by third parties. Use of such software is subject to the terms and conditions of license agreements enclosed with this product. Software specifications are subject to change without notice and may not necessarily be identical to current retail versions.

Updates and additions to software may require an additional charge. Subscriptions to online service providers may require a fee and credit card information. Financial services may require prior arrangements with participating financial institutions.

© 2000 Sony Corporation All rights reserved.

Reproduction in whole or in part without permission is prohibited.

End User Software License Agreement

This End User Software License Agreement (the "EULA") is a legal agreement between you and Sony Corporation (hereinafter referred to as "SONY"), a corporation organized under Japanese Law, the manufacturer of your SONY computer system (the "SONY HARDWARE"). Please read this EULA carefully before installing or using the software distributed together with this EULA (the "SONY SOFTWARE"). By installing or using the SONY SOFTWARE, you agree to be bound by the terms of this EULA. You may use the SONY SOFTWARE only in connection with the use of the SONY HARDWARE. SONY SOFTWARE is licensed not sold.

Notwithstanding the foregoing, software distributed together with separate End User Software License Agreement (the "Third Party EULA"), including but not limited to Windows[®] operating system provided by Microsoft Corporation, shall be covered by the Third Party EULA.

If you do not agree to the terms of this EULA, please return the SONY SOFTWARE together with the SONY HARDWARE to the place where you obtained it.

1. License. This SONY SOFTWARE and the related documentation are licensed to you by SONY. This EULA allows you to use the SONY SOFTWARE for your personal use for a single SONY HARDWARE outside a network and only to make one copy of the SONY SOFTWARE in machine-readable form for back-up purposes only.

2. Restrictions. The SONY SOFTWARE contains copyrighted material and other proprietary material. In order to protect them, and except as permitted by applicable law, you may not decompile, reverse engineer or disassemble the SONY SOFTWARE in whole or in part. Except for the transfer of the SONY SOFTWARE together with the SONY HARDWARE and prior agreement of the recipient to be bound by the terms and conditions of this EULA, you may not sell or rent the SONY SOFTWARE and its copy to any third party.

3. Limited Warranty. SONY warrants the media on which the SONY SOFTWARE is recorded to be free from physical defects for a period of ninety (90) days from the date of purchase as evidenced by a copy of the receipt. During the applicable warranty period, SONY will replace free of charge such media that proved to be defective; provided they are returned properly packaged to the place where you obtained it, together with your name, address, and proof of date of purchase. SONY will have no responsibility to replace media damaged by accident, abuse, or misapplication. The above limited warranty replaces all other representations, conditions and warranties, whether express or implied, by statute or otherwise and SONY expressly disclaims all other warranties and all conditions including, but not limited to, the implied warranties and/or conditions of satisfactory quality and fitness for a particular purpose. The terms of this limited warranty do not affect or prejudice your statutory rights as an ultimate consumer, neither do they limit or exclude any liability for death or personal injury caused by the negligence of SONY.

4. Termination. This EULA is effective until terminated. You may terminate this EULA at any time by destroying the SONY SOFTWARE, related documentation, and all copies thereof. This EULA will terminate immediately without notice from SONY, if you fail to comply with any provision of this EULA. Upon termination you must destroy the SONY SOFTWARE, related documentation, and all copies thereof.

5. Governing Law. This EULA shall be governed by and construed in accordance with the laws of Japan. Should you have any questions concerning this EULA or this limited warranty, please refer to the Customer Service Guide on how to contact VAIO-Link.

Sony, DVgate, i.LINK™, Mavica, PictureGear, Visual Flow, Smart Capture, Smart Connect, Smart Connect Monitor, Memory Stick and the Memory Stick logo, VAIO and the VAIO logo are trademarks of Sony Corporation.

Windows and the Windows 98 logos are registered trademarks of Microsoft Corporation.

All other trademarks are trademarks of their respective owners.

Specifications are subject to change without notice.

As an ENERGY STAR Partner, Sony has determined that this product meets the ENERGY STAR guidelines for energy efficiency.

The International ENERGY STAR Office Equipment Program is an international program that promotes energy saving through the use of computers and their office equipment. The program backs the development and dissemination of products with functions that effectively reduce energy consumption. It is an open system in which business proprietors can participate voluntarily. The targeted products are office equipment such as computers, displays, printers, facsimiles and copiers. Their standards and logos are uniform among participating nations.

ENERGY STAR is an U.S. registered mark.



About the Software on Your Notebook Computer

Your Sony notebook computer is ready to help you work, play, learn, and communicate as soon as you turn it on. This section gives you an overview of the activities you can perform with your software titles.

For general information and technical assistance, please refer to your *Customer Service Guide*.

Sony software



PictureGear

Sony Electronics

Create your own environment with the Digital Image Library (photos, backgrounds, wallpapers, slide shows, etc). PictureGear is your assistant for creating and implementing personal screen savers, panoramas (combined images)... You can even animate your preferred gifs with Gif Animation Tools, create labels for all your medias with PictureGear Label Maker, or play back movies in a variety of formats.

For details, please read the PictureGear Help file.





DVgate

Sony Electronics

DVgate is a kit of 3 complementary applications: DVgate Motion, DVgate Still, and DVgate Assemble.



Edit the rushes you have shot with your digital video camera recorder using this video-capture application, specially tuned for high-quality numeric movies. When connected to your camera via i.LINK™, your computer operates as an editing desk that can preview, cut and assemble your selection and save the sequences in AVI format.

Attaching a DV device to the i.LINK™ connector enables you to transfer the images you have captured to your hard drive. DVgate Still displays digital video images sent from a digital video cassette recorder or a digital video camera recorder, and captures them as still pictures on your notebook computer.

For details, please read the DVgate Help file.



Media Bar

Sony Electronics

Media Bar is a command and control center designed to assist you in organizing and playing your entire collection of audio and sound files. Media Bar allows you to play audio CDs, video CDs in the CD-ROM drive or play audio or video files in various formats on your hard drive.



Video images are displayed in a separate Movie window, which you can move and resize (to full screen). When you connect a Sony MD deck that includes a CONTROL A1 or Control A1 II jack to your computer, you can use MD Player to operate the MD deck from the computer. In addition to the normal MD playback operations, you can edit MiniDiscs® while viewing the computer's display and input disk names and track names using the computer's keyboard. If you connect a Sony CD Player that includes a CONTROL A1 or Control A1 II jack to the MD deck, you can also operate the CD player (playback) from the computer and carry out drag-and-drop recording from a CD to an MD. For details, please read Media Bar Help file.



Smart Capture

Sony Electronics

Connect a digital camera to your computer to shoot still images and video clips, which you can view or send by e-mail. The Smart Capture Finder displays images from the camera and allows you to adjust the settings or create effects.

Smart Capture enables you to capture images via i.LINK™ compatible devices or create a panorama picture using the panorama assist function.

See the chapter "Using Smart Capture" or the Smart Capture Help file for more details.



Smart Connect and Smart Connect Monitor

Sony Electronics

With Smart Connect and Smart Connect Monitor you can copy, edit or delete files on another VAIO computer (equipped with Smart Connect) connected to your computer with an i.LINK™ cable.

You can also print a document on a printer connected to another VAIO computer.



VisualFlow

Sony Electronics

VisualFlow allows you to browse interactively through the contents of your Memory Sticks (optional). VisualFlow can display Memory Stick files in a variety of ways, and allows you to play / display still images, movies or sound files within VisualFlow or with other software. For details, please read the VisualFlow Help file.



UI Design Selector

Sony Electronics

You can change the window design of the Sony Software compatible with UI Design selector.





Product Recovery CD-ROM

Sony ITE

The Product Recovery CD-ROM allows you to reinstall individual applications and device drivers if they are corrupted or accidentally erased. It also allows you to restore the software titles that were shipped with your computer if they become corrupted or are erased accidentally. Reinstalling an individual device driver or software title may correct a problem you are experiencing with your computer, and you may not need to recover the entire contents of your hard drive.

! You can only use this Recovery CD-ROM on the Sony notebook you purchased and not on any other Sony PC or other manufacturer's PC.



Operating System and other pre-installed software



Windows® 98 Second Edition

Microsoft Corporation

Microsoft® Windows® 98 Second Edition makes your computer work better by integrating tightly with the Internet and providing better system performance and easier system diagnostics and maintenance. With Windows® 98 Second Edition, your system plays better as well with support for the latest graphics, sound, and multimedia technologies, easy addition and removal of peripheral devices, and the convergence of the TV and PC in your home. This exciting new operating system builds on the groundbreaking features introduced with Windows® 98. At the same time, Windows® 98 Second Edition maintains the best support for older Windows-based applications and technologies. For questions and technical assistance, go online to:

<http://www.microsoft.com/directory/>



Internet Explorer 5.0

Microsoft Corporation

Internet Explorer is the Internet browser of Microsoft. The Setup Wizard configures your computer to connect automatically to the service provider of your choice. A full e-mail package enables you to send and receive mail - including attached files - across the Internet. NetMeeting, Outlook Express and Microsoft Chat are just some of the components bundled with Internet Explorer 5.0. A complete online tutorial helps new users become comfortable using the Internet. For questions and technical assistance, go online to:

<http://www.microsoft.com/directory/>



Adobe® Acrobat® Reader 4.1

Adobe Systems Incorporated

Acrobat Reader software allows you to view, navigate, and print electronic documents in Adobe Portable Document Format (PDF), an open file format that is intended to preserve the fidelity of documents created on all major computer platforms. Once Acrobat Reader is installed, you can



open and view PDF files from within your Web browser by clicking on a PDF file embedded in an HTML file. You quickly see the first page while the rest of the document is being downloaded.

For questions and technical assistance, go online at

<http://www.adobe.com>



QuickTime 4.1

Apple

QuickTime is the Apple technology that makes video, sound, music, 3D and virtual reality come alive for your Internet browser and Windows.

For further information, see the web site at:

<http://www.apple.com/quicktime/>



VirusScan

McAfee (Network Associates)


VirusScan is McAfee's powerful and advanced anti-virus solution.

If a virus is detected, VirusScan can attempt to remove it from the infected file, move the file to a quarantine location, or delete the infected file.

VirusScan is an important element of a comprehensive security program that includes a variety of safety measures such as regular backups, meaningful password protection, training, and awareness. For details, please refer to the online help files or for technical support, go to

<http://www.mcafee.com>



 You can capture still images from i.LINK™ compatible devices. For connecting the device, refer to **Connecting a Digital Video Camera Recorder** in your Notebook Computer user guide. Also consult the Smart Capture online help for information on installation and use.


Using Smart Capture

You can use Smart Capture to shoot still images and record video clips from a digital camera connected to your computer.

Capturing a still image

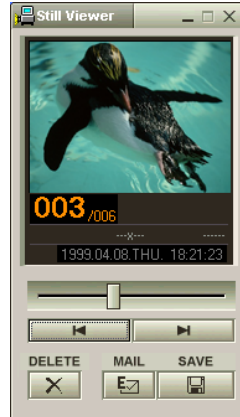
- 1 Launch **Smart Capture** from the **Start** menu, in **Programs / Smart Capture / Smart Capture**.
- 2 The finder window appears, displaying the image of the subject.
- 3 Adjust the focus on the subject you want to shoot.
- 4 Click the **Capture** button in the **Smart Capture** window. The **Still Viewer** window appears with the image you shot in the Still Image Display area.




- 5 To end **Smart Capture** click the  button in the top right corner of the window.

Displaying the captured images in Still Viewer

From the **Start** menu, select **Programs - Smart Capture** and click **Still Viewer**. You can display, save or delete your images or send them by e-mail.



To end **Still Viewer** click the **X** button.

 See the Smart Capture software online help for more information on installation and use.

You can capture the following still images sizes : 640 x 480, 320 x 240, 160 x 120, 80 x 60, and 40 x 30 pixels.


When capturing a small resolution image (i.e. 80 x 60 or 40 x 30 pixels) , the displayed image on the finder window may appear blurred.

A gap may appear when a rapid-moving object is displayed. However this is not a malfunction.



You can create a panorama picture by using PictureGear 2.5SE or higher.

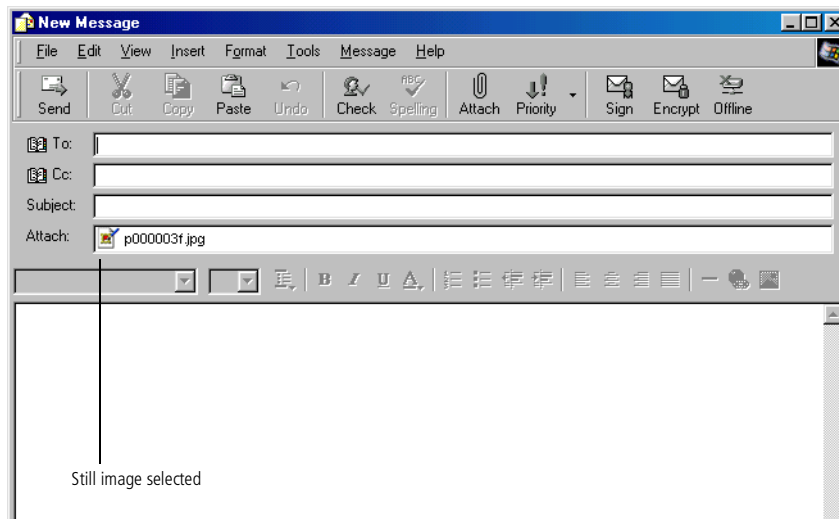
See the software online help for information on installation and use.

You can capture still images and video clips from a digital video camera using Smart Capture.

 You need to set up MAPI when using the e-mail software. See the manual supplied with the e-mail software for more information on sending e-mails.

To send a still image via e-mail

- 1 Click the **Start** button on the Windows[®] taskbar.
- 2 Point to **Programs** and click **Smart Capture**.
- 3 Click **Still Viewer**.
- 4 Select the still image you want to send via e-mail, using  or .
- 5 Click **Mail**. Your e-mail window appears with the selected file attached to your message.

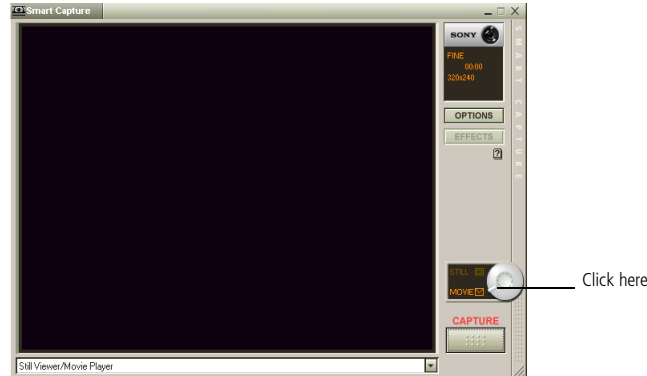


- 6 Send the e-mail.


Shooting a video clip

You can use Smart Capture to shoot (capture) video clips with a Video Camera connected to your computer, as well as play them or send them via e-mail.

- 1 Launch **Smart Capture**. Select **Movie** using the **Switch Capture Mode** button.



- 2 The image will appear in the finder. Turn the camera towards the subject.
- 3 Adjust the image.
- 4 Click the **Capture** button to shoot a video clip (you can shoot up to 60 seconds, according to the settings you chose in the Recording options section).
- 5 Click the **Capture** button when finished. The **Movie Player** window opens and the captured video clip appears in the **Movie Player** window.

 You can shoot video clips in the following formats :

Non-compressed :

- Video 160 x 120, 24 bits, max. 10 frames/sec.
- Audio PCM, 11.025 kHz, 16 bits, monophonic

Compressed :


- Video MPEG1 160 x 112, maximum of 30 frames/sec (effective maximum equivalent to 10 frames/sec).
- Audio MPEG1, 44.1 kHz (effective maximum equivalent to 11.025 kHz), monophonic.

A gap may appear when a rapid-moving object is displayed.

However this is not a malfunction.



Captured video clip

- 6 Click ▶ to playback the images. Click || to pause, ■ to stop playback.
- 7 To end **Smart Capture**, click .

See the manual supplied with the e-mail software for more information on sending e-mails.

To playback captured video clips

1 Start the Movie Player software.



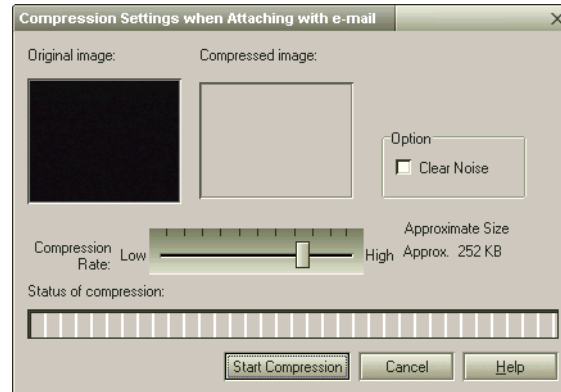
2 Click ▶ to playback the images. Click ⏸ to pause, ■ to stop playback.

3 To end Movie Player click


To send a video clip via e-mail

If you shoot a video clip in a low resolution format, you can send it by e-mail.

- 1 Click the **Start** button on the Windows® taskbar.
- 2 Point to **Program** and then **Smart Capture**.
- 3 Click **Movie Player**.
- 4 Click **Mail**.
- 5 The **Compression Settings** window opens.
- 6 Choose the compression rate by moving the slider.



- 7 Click **Start Compression**. When compression is completed, a window message will ask you if you want to attach the file to your e-mail.
- 8 Accept and send the e-mail.

 You can only use these Recovery CD-ROMs on the Sony notebook you purchased and not on any other Sony PC or other manufacturer's PC!

To perform a system recovery, the notebook should not be docked (port replicator).

For more information about using your CD-ROM drive, read the corresponding chapter in this user guide or the manual supplied with your peripheral.

Using the Product Recovery CD-ROMs

The following sections describe how to use the Recovery CD-ROMs.

You will find a set of two Recovery CD-ROMs in your Product Recovery Pack:

- ❑ The System Recovery CD-ROM (vol. 1 of 2) allows you to perform a full system recovery;
- ❑ The Application Recovery CD-ROM (vol. 2 of 2) helps you to recover your pre-installed software and to reinstall the device drivers manually.

The system recovery process allows you to reinstall an image of the hard disk as it was when you started using your notebook computer.

Use the **System Recovery CD** in the following cases:

- ❑ In the event of a serious system crash,
- ❑ If you want to modify the size of your partitions.



The **Application Recovery CD** allows you to:

- ❑ Reinstall an individual driver if a device is not functioning properly,
- ❑ Reinstall an individual application in the case you have problems running it.

Performing a system recovery

Use this option only when your system is seriously damaged, e.g. if Windows® does not work any more, or your PC behaves abnormally, etc. The system recovery will completely reinstall the originally configured system on your C: drive. Your D: drive data will not be deleted if you choose to keep the same partition settings. If you decide to modify the size of your partitions, the existing data on both drives (C: and D:) will be deleted.

- ! Applying a system recovery means that you will lose all your data stored on your C: drive (and your D: drive if you modify partition settings). Therefore, before applying a system recovery, copy your data to an external disk.
- ! CAUTION: make sure that your computer is connected to AC (not the battery) before you attempt a system recovery.
- ! CAUTION: when the recovery is performed, you must remove the recovery CD-ROM from the drive before restarting the computer. If the CD-ROM is still in the drive, you will restart a recovery process.

-  The recovery process takes between 10 to 20 minutes to complete.
-  You must run the Application Recovery CD (vol. 2 of 2) from Windows®. The application will not run from DOS.
When performing an application recovery, you do not lose data on your hard disk.

Procedure for starting a system recovery

- 1 Take the System Recovery CD-ROM (vol. 1 of 2).
- 2 Turn on your computer (using AC power only) and insert the System Recovery CD-ROM in the CD-ROM drive.
- 3 Shut down your computer (Start/Shut Down/Shut Down).
- 4 Wait ten seconds and turn your computer back on.
- 5 On the first screen that appears, click **OK**.
- 6 The System Recovery CD screen appears, asking you what to do with the partitions on your hard disk. At this stage you have 3 options available.
 - Recovering the system without changing partitions
 - Recovering the system with modified partition sizes
 - Aborting the recovery process

Recovering the system without changing partitions

- 1 Press **C** to keep your current partitions. This is the recommended option if you do not need to modify the partition sizes and if you want to restore your C: drive while keeping the data on your D: drive untouched.
 - 2 Press **G** to proceed with the system recovery.
 - 3 Follow the instructions on the screen.
 - 4 When the recovery process is finished, remove the Recovery CD-ROM from the drive and press any key to restart your notebook computer.
-

Recovering the system with modified partition sizes

- 1 Press **P** to modify partitions on your notebook computer. Select this option only if you need change the sizes of your partitions. Please note that this option will delete all existing data both on the C: and D: drives before starting the recovery.
- 2 On the next screen, press **Y** to confirm the deletion of the current partitions.
- 3 The next screen displays a selection of sizes for your new C: drive. According to the option you select, the recovery process will create 1 or 2 partitions on the hard disk. (For more details on partitions, see the chapter **About the Partitions of your Hard Disk Drive**)
- 4 Confirm your selection on the next screen and wait until the new partitions are created and the notebook computer reboots.
- 5 Then follow the steps described in the previous section Recovering the system without changing partitions.

Aborting the recovery process

The recovery process always warns you when the decision you are asked to take cannot be undone. Whenever possible, the recovery screens allow you either to go back to the previous screen, or to abort the recovery process.

If your computer does not start the system recovery utility.

Please refer to your Customer Service Guide to contact VAIO-Link.



Performing an Application Recovery

The application recovery utility allows you to reinstall individual applications. Reinstalling a program can fix the problems encountered if it does not run correctly anymore.

Procedure for an application recovery

- 1 Take the Application Recovery CD-ROM (vol. 2 of 2).
- 2 Turn on your computer (using AC power only) and wait until Windows[®] has loaded.
- 3 Insert the Application Recovery CD-ROM in the CD-ROM drive. The Install Manager starts running automatically.
- 4 When the Install Manager menu appears, follow the instructions on the screen to select the application you want to recover.
- 5 Follow the installation instructions in the Install Manager.



Reinstalling a device driver

Some applications or peripherals require specific drivers which you won't find in the Windows[®] drivers folder. To help you find or restore typical drivers needed by your pre-installed applications, you can use the Application Recovery CD-ROM.

- 1 First check whether the driver you plan to reinstall is on the Application Recovery CD-ROM. Only device drivers that are not delivered with Windows[®] can be found in the Drivers directory.
- 2 Check all underlying sub-directories for the appropriate driver.
- 3 Next, launch the **Add New Hardware** wizard (in the Windows[®] start menu, select **Settings**, then **Control Panel**) to install the appropriate device by browsing through the appropriate folders.

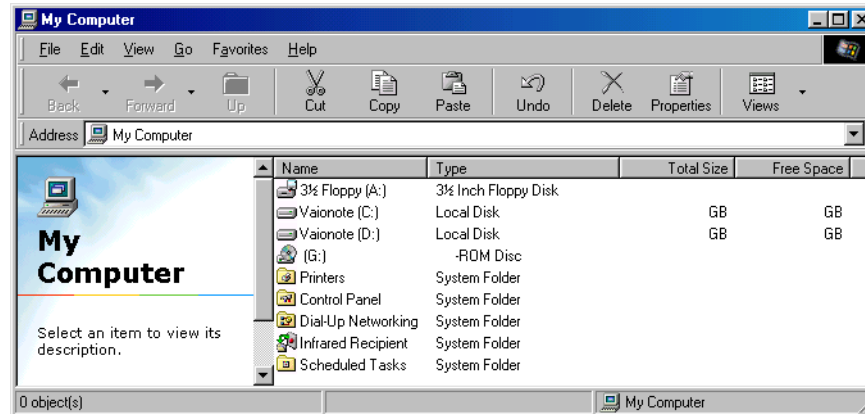



About the Partitions of your Hard Disk Drive

In **My Computer** or **Windows Explorer**, you may have noticed the **My Computer** availability of two drives (C: and D:): your hard disk drive comes from the factory with 2 logical partitions: this does not mean that your computer contains two physical hard disks.

Default disk space allocation

When you start using your notebook computer, your C: drive contains all the files required by Windows and other pre-installed software, while the D: drive comes empty. The D: drive is the ideal storage space for all your documents, especially big ones like digital motion pictures captured with DVgate.



 While you can perform a system recovery and change the partition settings in order to have one C: drive only, this option is not recommended for using video editing applications like DVgate. For more information, see the DVgate online help (Recommended settings topic).

How to use your partitioned drives

In order to avoid mishandling or malfunction of your software and files, please take the following precautions:

- ❑ To optimize data storage, use the C: drive to install new applications, and save all your documents to the D: drive. Moreover, doing so will prevent the loss of your documents in the case you need to perform a system recovery.
- ❑ Do not try to add, delete, or resize partitions unless you really need it. Changing partition settings might delete all your files on the hard disk.
- ❑ If you need to perform a system recovery, but do not want to lose all the data stored on your hard disk, copy all the files you want to keep on the D: drive. During the system recovery process, choose to keep the current partition information. Doing so will keep your D: drive unchanged after the recovery process. For more information on the recovery process, see the **Using the Product Recovery CD-ROMs** chapter.
- ❑ If you do need to change the size of your partitions, you can do so by performing a system recovery. In this case, it is important to note that all data on your hard disk will be deleted. If you need to keep existing files, be sure to backup them up before performing the system recovery. For more information on the recovery process, see the **Using the Product Recovery CD-ROMs** chapter.