

Wireless noise cancelling stereo headset

Reference Guide

Referentiegids

Felhasználói útmutató

Guide de référence

Guida di riferimento

Przewodnik

Guía de referencia

Referenzanleitung

Made for



iPod iPhone



WF-1000X

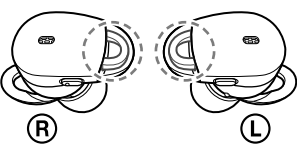
©2017 Sony Corporation
Printed in China
4-724-044-11(1)



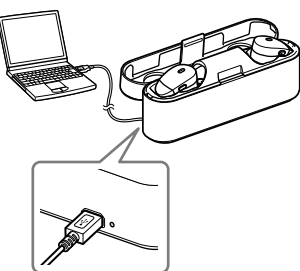
* 4 7 2 4 0 4 4 1 1 * (1)

<http://www.sony.net/>

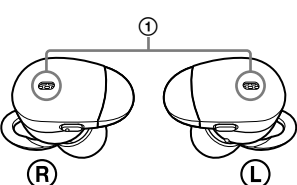
A



B



C



English

Do not install the appliance in a confined space, such as a bookcase or built-in cabinet.

Do not expose the batteries (battery pack or batteries installed) to excessive heat such as sunshine, fire or the like for a long time.

Do not dismantle, open or shred secondary cells or batteries.

In the event of a cell leaking, do not allow the liquid to come in contact with the skin or eyes. If contact has been made, wash the affected area with copious amounts of water and seek medical advice. Secondary cells and batteries need to be charged before use. Always refer to the manufacturer's instructions or equipment manual for proper charging instructions.

After extended periods of storage, it may be necessary to charge and discharge the cells or batteries several times to obtain maximum performance. Dispose of properly.

Notice for customers: the following information is only applicable to equipment sold in countries applying EU directives

This product has been manufactured by or on behalf of Sony Corporation, 1-7-1 Konan Minato-ku Tokyo, 108-0075 Japan. Inquiries related to product compliance based on European Union legislation shall be addressed to the authorized representative, Sony Belgium, bijkantoor van Sony Europe Limited, Da Vincilaan 7-D1, 1935 Zaventem, Belgium. For any service or guarantee matters, please refer to the addresses provided in the separate service or guarantee documents.



Hereby, Sony Corporation declares that this equipment is in compliance with Directive 2014/53/EU.

The full text of the EU declaration of conformity is available at the following internet address: <http://www.compliance.sony.de/>



Disposal of waste batteries and electrical and electronic equipment (applicable in the European Union and other European countries with separate collection systems)

This symbol on the product, the battery or on the packaging indicates that the product and the battery shall not be treated as household waste. On certain batteries this symbol might be used in combination with a chemical symbol. The chemical symbols for mercury (Hg) or lead (Pb) are added if the battery contains more than 0.0005% mercury or 0.004% lead. By ensuring these products and batteries are disposed of correctly, you will help prevent potentially negative consequences for the environment and human health which could otherwise be caused by inappropriate waste handling. The recycling of the materials will help to conserve natural resources.

In case of products that for safety, performance or data integrity reasons require a permanent connection with an incorporated battery, this battery should be replaced by qualified service staff only. To ensure that the battery and the electrical and electronic equipment will be treated properly, hand over these products at end-of-life to the applicable collection point for the recycling of electrical and electronic equipment. For all other batteries, please view the section on how to remove the battery from the product safely. Hand the battery over to the applicable collection point for the recycling of waste batteries. For more detailed information about recycling of this product or battery, please contact your local Civic Office, your household waste disposal service or the shop where you purchased the product or battery.

The validity of the CE marking is restricted to only those countries where it is legally enforced, mainly in the countries EEA (European Economic Area).

The nameplate and important information concerning safety are located on the bottom exterior of charging case.

The Bluetooth® word mark and logos are registered trademarks owned by the Bluetooth SIG, Inc. and any use of such marks by Sony Corporation is under license.

The N-Mark is a trademark or registered trademark of NFC Forum, Inc. in the United States and in other countries.

Windows is a registered trademark or trademark of Microsoft Corporation in the United States and/or other countries.

Mac, OS X, iPod and iPod touch are trademarks of Apple Inc., registered in the U.S. and other countries.

"Made for iPod" and "Made for iPhone" mean that an electronic accessory has been designed to connect specifically to iPod or iPhone, respectively, and has been certified by the developer to meet Apple performance standards. Apple is not responsible for the operation of this device or its compliance with safety and regulatory standards. Please note that the use of this accessory with iPod or iPhone may affect wireless performance.

Android is a trademark of Google Inc.

Other trademarks and trade names are those of their respective owners.

Precautions

On BLUETOOTH communications

- BLUETOOTH wireless technology operates within a range of about 10 m. Maximum communication range may vary depending on obstacles (human body, metal, wall, etc.) or electromagnetic environment.
- The aerial is built into the unit as illustrated in the dotted line (Fig. A). The sensitivity of the BLUETOOTH communications will improve by turning the direction of the built-in aerial to the connected BLUETOOTH device. When obstacles are between the aerial of the connected device and the built-in aerial of this unit, noise or audio dropout may occur, or communications may be disabled.
- BLUETOOTH communications may be disabled, or noise or audio dropout may occur under the following conditions.
 - There is a human body between the unit and the BLUETOOTH device.

This situation may be improved by placing the BLUETOOTH device facing the aerial of the unit.

- There is an obstacle, such as metal or wall, between the unit and the BLUETOOTH device.
- A device using 2.4 GHz frequency, such as a Wi-Fi device, cordless telephone, or microwave oven, is in use near this unit.

- Because BLUETOOTH devices and Wi-Fi (IEEE802.11b/g/n) use the same frequency (2.4 GHz), microwave interference may occur resulting in noise or audio dropout or communications being disabled in this unit is used near off-Wi-Fi device. In such a case, perform the following.
 - Use this unit at least 10 m away from the Wi-Fi device.
 - If this unit is used within 10 m of a Wi-Fi device, turn off the Wi-Fi device.
 - Install this unit and the BLUETOOTH device as near to each other as possible.

- Microwaves emitting from a BLUETOOTH device may affect the operation of electronic medical devices. Turn off this unit and other BLUETOOTH devices in the following locations, as it may cause an accident:
 - where inflammable gas is present, in a hospital, or a petrol station
 - near automatic doors or a fire alarm.

- Do not use the unit on an airplane. Radio waves may affect instruments, causing an accident due to malfunction.
- Due to the characteristic of the wireless technology, the sound played on this unit is delayed from the sound and music played on the sending device. Therefore, the image and sound may be misaligned when viewing a movie or playing a game.

- This unit supports security capabilities that comply with the BLUETOOTH standard to provide a secure connection when the BLUETOOTH wireless technology is used, but security may not be enough depending on the setting. Be careful when communicating using BLUETOOTH wireless technology.
- We do not take any responsibility for the leakage of information during BLUETOOTH communications.
- Connection with all BLUETOOTH devices cannot be guaranteed.

- A device featuring BLUETOOTH function is required to conform to the BLUETOOTH standard specified by Bluetooth SIG, Inc. and be authenticated.
- Even if the connected device conforms to the above mentioned BLUETOOTH standard, some devices may not be connected or work correctly, depending on the features or specifications of the device.

- While talking on the phone hands free, noise may occur, depending on the device or communication environment.
- Depending on the device to be connected, it may require some time to start communications.

If sound skips frequently during playback

- The situation may be improved by setting the sound quality mode to "priority on stable connection." For details, refer to the Help Guide.
- The situation may be improved by changing the wireless playback quality settings or fixing the wireless playback mode to SBC on the transmitting device. For details, refer to the operating instructions supplied with the transmitting device.

- If you are using a smartphone, the situation may be improved by shutting down unnecessary applications or rebooting the smartphone.

On the use of calling apps for smartphones and computers

- This unit supports normal incoming calls only. Calling apps for smartphones and computers are not supported.

On charging the unit

- This unit can be charged using USB only. Personal computer with USB port is required for charging.
- This unit cannot be turned on, nor can the BLUETOOTH and noise cancelling functions be used, during charging.

- If you do not use the unit for a long time, the rechargeable battery may not be able to keep sufficient charge. The battery will be able to keep a charge properly after repeatedly discharging and charging several times.
- If you store the unit for a long time, charge the battery once every half year to prevent over-discharge.

- If the length of time you can use the unit became extremely short, the rechargeable battery should be replaced with a new one. Please contact your nearest Sony dealer for a battery replacement.

Note on static electricity

- Static electricity accumulated in the body may cause mild tingling in your ears. To minimise the effect, wear clothes made from natural materials.

If the unit does not operate properly

- Reset the unit (Fig. B). When resetting this unit, charge the unit. When charging starts, this unit is reset automatically. The pairing information and the other settings are retained.

- If the problem persists even after the resetting operation above, initialize the unit as follows. First, remove the unit from the charging case. Hold down the button on the L (left) side for more than 2 seconds and confirm that the units on the L (left) and R (right) sides turn off. Then hold down the buttons on the L and R sides simultaneously for more than 15 seconds. The indicator (blue) flashes 4 times, and the unit is reset to the factory settings. All pairing information is deleted.

- After the unit is initialized, it may not connect to your iPhone or computer. In this case, delete the pairing information of the unit from the iPhone or computer, and then pair them again.

What is noise cancelling?

- The noise cancelling circuit actually senses outside noise with built-in microphones and sends an equal-but-opposite cancelling signal to the unit.
 - The noise cancelling effect may not be pronounced in a very quiet environment, or some noise may be heard.
 - Depending on how you wear the unit, the noise cancelling effect may vary or a beeping sound (howling) may occur. In these cases, take off the unit and put it on again.

- The noise cancelling function works for noise in the low frequency band primarily. Although noise is reduced, it is not cancelled completely.
- When you use the unit in a train or a car, noise may occur depending on street conditions.
- Mobile phones may cause interference and noise. Should this occur, locate the unit further away from the mobile phone.
- Do not cover the microphones of the unit (D) with your hands. The noise cancelling function or the Ambient Sound Mode may not work properly, or a beeping sound (howling) may occur. In these cases, take your hands off of the microphones of the unit (Fig. C).

Others

- Do not place this unit in a place exposed to humidity, dust, soot or steam, or subject to direct sunlight. Do not leave the unit in a car for a long time. It may cause a malfunction.
- Using the BLUETOOTH device may not function on mobile phones, depending on radio wave conditions and location where the equipment is being used.

- High volume may affect your hearing.
- For traffic safety, do not use while driving or cycling.
- Do not use the unit in places where it would be dangerous if you are unable to hear ambient sound, such as at railroad crossings, train station platforms, and construction sites.

- Do not put weight or pressure on this unit as it may cause the unit to deform during long storage.
- Do not subject the unit to excessive shock.
- Clean the unit with a soft dry cloth.
- Do not expose the unit to water. The unit is not waterproof.

- Remember to follow the precautions below.
 - Be careful not to drop the unit into a sink or other container filled with water.
 - Do not use the unit in humid locations or bad weather, such as in the rain or snow.
 - Do not touch the unit wet.
 - If you touch the unit with wet hands, or put the unit in a damp article of clothing, the unit may get wet and this may cause a malfunction of the unit.

- If you experience discomfort after using the unit, stop using the unit immediately.
- Install the earbuds firmly. If an earbud accidentally detaches and is left in your ear, it may cause injury.
- Since children may swallow small parts such as the unit and earbuds, store the unit in the charging case after use and keep it out of the reach of children.
- If you have any questions or problems concerning this unit that are not covered in this manual, please consult your nearest Sony dealer.

About triple-comfort earbuds

- Supplied triple-comfort earbuds provide a snug fit for effective attenuation of ambient noise.
 - Prolonged use of snugly fitting earbuds may strain your ears. If you experience discomfort, discontinue use.
 - Do not pull only the foamed silicone portion of the earbuds. If the foamed silicone portion is separated from the earbuds, the earbuds will not function.
 - Do not subject the foamed silicone portion to pressure over long periods, as it may cause deformation.

- The varying sizes of the holes on the foamed silicone portion have no effect on the sound quality.
- You may hear a cracking noise in your ears when wearing the earbuds. This is not a malfunction.
- Foam materials deteriorate by long-term and storage. Replace with new materials if the deterioration hinders the original function.

Optional replacement earbuds can be ordered from your nearest Sony dealer.

Compatible iPhone/iPod models

You can use the unit with only the following models. Update your iPhone or iPod to the latest software before use.

- iPhone 7 Plus
- iPhone 7
- iPhone SE
- iPhone 6s Plus
- iPhone 6s
- iPhone 6 Plus
- iPhone 6
- iPhone 5s
- iPhone 5c
- iPhone 5
- iPod touch (6th generation) (As of August 2017)

Specifications

General
Communication system: BLUETOOTH Specification version 4.1
Output: BLUETOOTH Specification Power Class 1
Maximum communication range: Line of sight approx. 10 m¹⁾
Frequency band: 2.4 GHz band (2,4000 GHz - 2,4835 GHz)
Operating frequency: BLUETOOTH 2,400 MHz - 2,483.5 MHz
NFC 13.56 MHz

Maximum output power: BLUETOOTH < 20.0 dBm
NFC < 60 dBµA/m at 10 m

Compatible BLUETOOTH profiles²⁾: A2DP (Advanced Audio Distribution Profile)
AVRCP (Audio Video Remote Control Profile)
HFP (Hands-free Profile)
HSP (Headset Profile)

Supported Codec³⁾: SBC⁴⁾, AAC⁵⁾
Supported content protection method: SCMS-T
Transmission range (A2DP): 20 Hz - 20,000 Hz (Sampling frequency 44.1 kHz)

Included items: Wireless noise cancelling stereo headset (1)
Micro-USB cable (approx. 50 cm) (1)
Charging case (1)
Long Hybrid silicone rubber earbuds (SS/S/M/L 2 each)
Triple-comfort earbuds (S/M/L 2 each)
Fitting supporters (M/L 2 each)
Reference Guide (this sheet) (1)
Operating Instructions (1)
Other documents (1 set)

- ¹⁾ The actual range will vary depending on factors such as obstacles between devices, magnetic fields around a microwave oven, static electricity, reception sensitivity, aerial's performance, operating system, software application, etc.
- ²⁾ BLUETOOTH standard profiles indicate the purpose of BLUETOOTH communications between devices.
- ³⁾ Codec: Audio signal compression and conversion format
- ⁴⁾ Subband Codec
- ⁵⁾ Advanced Audio Coding

Wireless noise cancelling stereo headset
Power source: DC 3.7 V: Built-in lithium-ion rechargeable battery
DC 5 V: When charged using USB
Mass: Approx. 6.8 g (Headset)
Approx. 70 g (Charging case)
Operating temperature: 0 °C to 40 °C
Rated power consumption: 1 W (Headset), 3 W (Charging case)
Usage hours: When connecting via the BLUETOOTH device
Music playback time: Max. 3 hours (NC ON), Max. 3 hours (NC OFF)
Communication time: Max. 3.5 hours
Standby time: Max. 8 hours (NC ON), Max. 35 hours (NC OFF)
Note: Usage hours may be shorter depending on the Codec and the conditions of use.

Charging time: Approx. 1.5 hours (About 70 minutes of music playback is possible after 15 minutes charging.) (Headset)
Approx. 3 hours (Charging case)
Note: Charging hours may be different depending on the conditions of use.

Charging temperature: 5 °C to 35 °C
Receiver
Type: Closed, Dynamic
Driver unit: 6 mm
Microphone
Type: Electret condenser
Directivity: Omni directional
Effective frequency range: 50 Hz - 8,000 Hz

System requirements for battery charge using USB
(As of August 2017)
Personal computer with pre-installed with any of the following operating systems and USB port:
Operating Systems
(when using Windows)
Windows® 10 Home / Windows® 10 Pro
Windows® 8.1 / Windows® 8.1 Pro
Windows® 8 / Windows® 8.1
Windows® 7
Home Basic / Home Premium / Professional / Ultimate
(when using Mac)
Mac OS X (version 10.9 or later)
Design and specifications are subject to change without notice.