

FM/AM RADIO with Bluetooth SPEAKER

Operating Instructions



©2016 Sony Corporation Printed in China

http://www.sony.net/

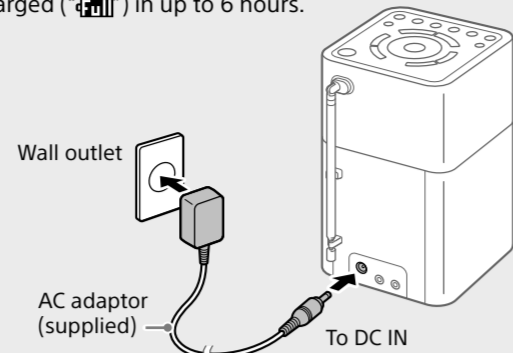
SRF-V1BT

Getting Started

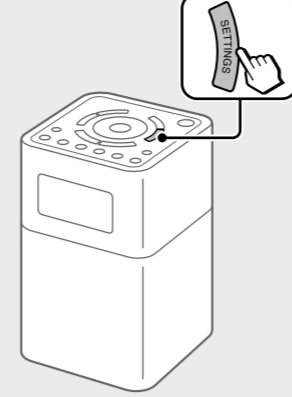
When using the unit for the first time, make sure to connect the unit to a wall outlet using the AC adaptor (supplied). Otherwise the unit will not turn on.

1 Connect the unit to a wall outlet and charge the unit.

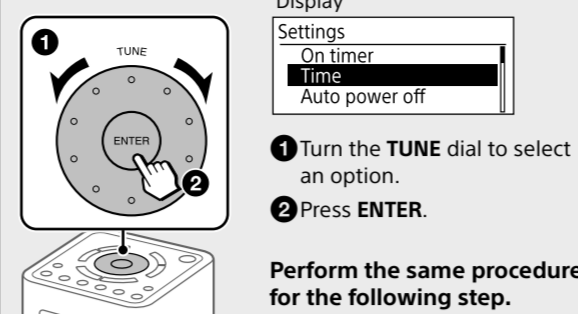
The built-in battery will be fully charged (100%) in up to 6 hours.



2 Press SETTINGS.



3 Select "Time."

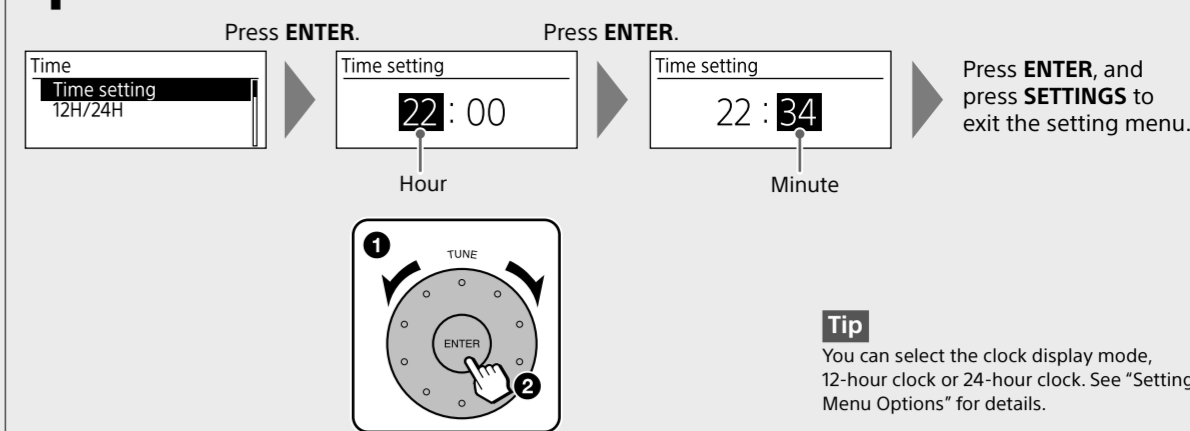


Display
Settings
On timer
Time
Auto power off

1 Turn the TUNE dial to select an option.
2 Press ENTER.

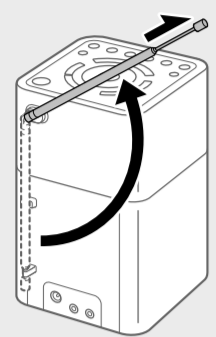
Perform the same procedure for the following step.

4 Set the hour and minute.

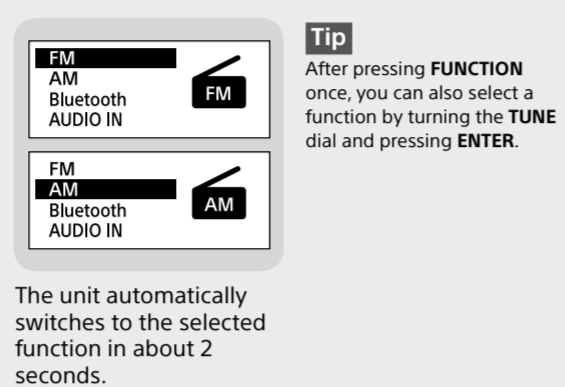
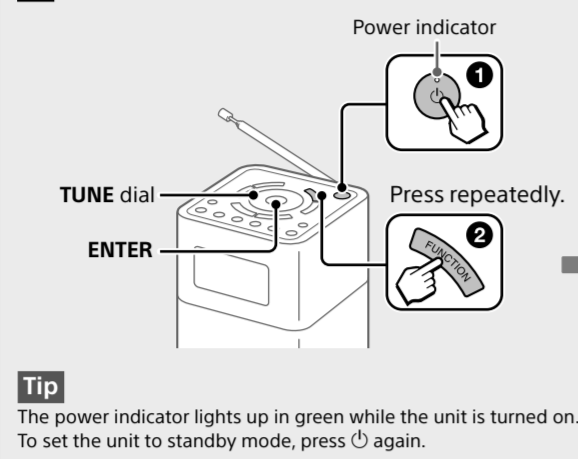


Listening to the Radio

1 Extend the antenna for FM radio reception.

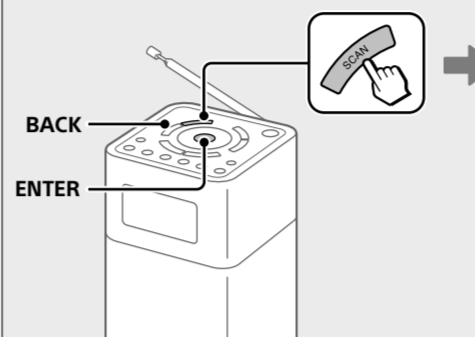


2 Turn on the unit, and select the "FM" or "AM" function.

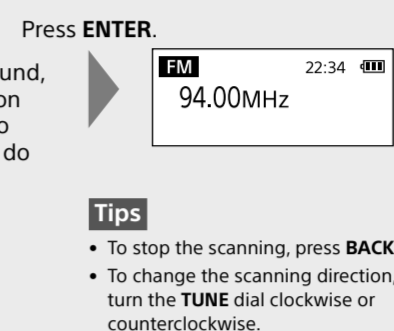


3 Select a desired station.

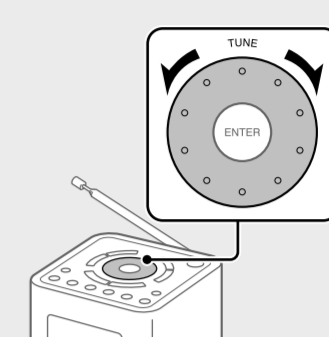
Scan tuning
Press SCAN to start scanning stations.



If a receivable station is found, "[ENTER]:Select" appears on the display. Press ENTER to receive the station. (If you do not press ENTER within 3 seconds, the search will restart.)



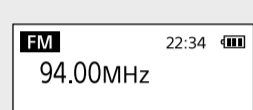
Manual tuning
You can manually tune to the desired frequency.



Presetting stations (5 FM and 5 AM)

1 Tune to the station you want to preset.

Follow the steps in "Listening to the Radio" above.



2 Press and hold the desired preset button (1-5) until "Stored to [PRESET x]." appears on the display.

Example: Presetting a tuned station to the preset button 3



Tips
• If you try to store another station with the same preset number, the previously stored station will be replaced.
• The preset button 3 on the unit has a tactile dot. Use the tactile dot as a reference when operating the unit.

Listening to a preset station

1 Select the "FM" or "AM" function.



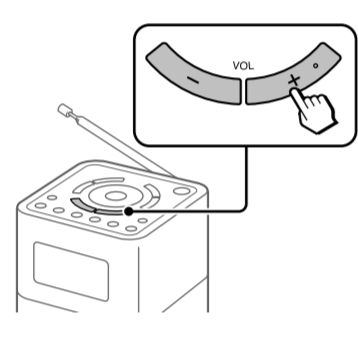
2 Select the desired preset station.

Example: When the preset button 3 is pressed



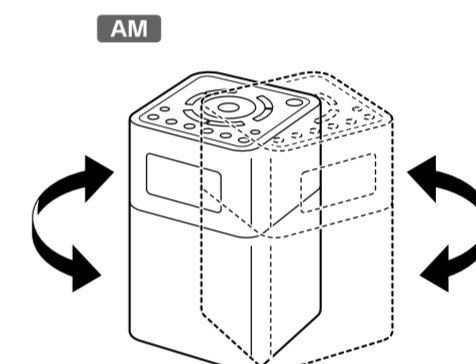
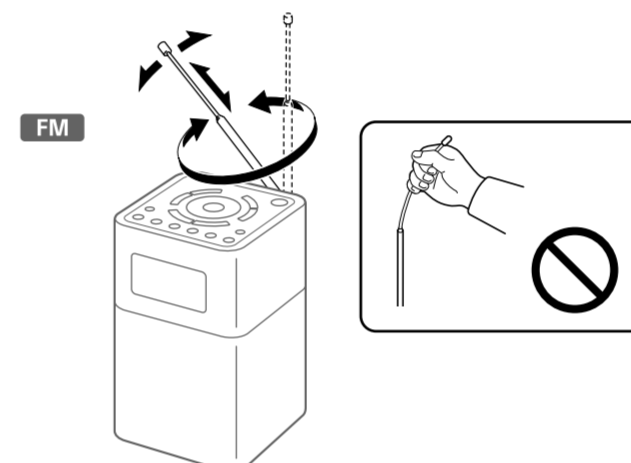
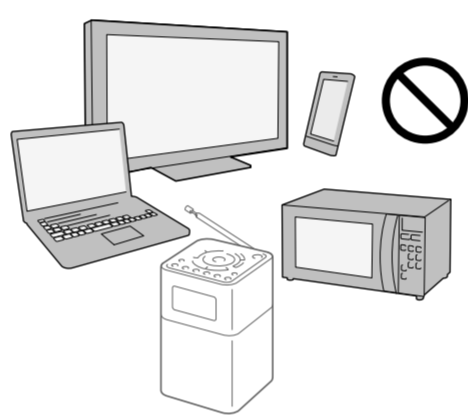
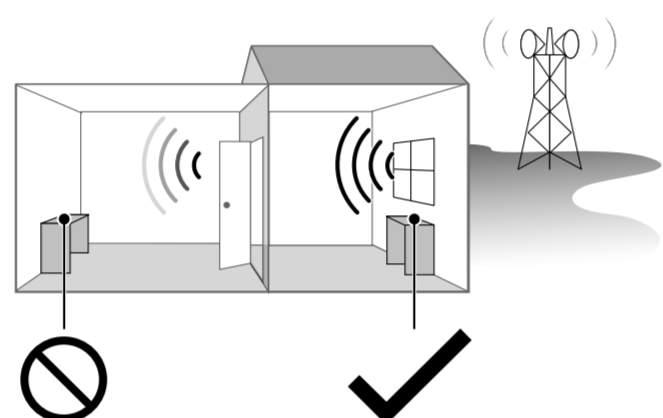
Note
To prevent the preset from being changed by mistake, do not hold down the preset button.

To adjust the volume



Tips
• The last set volume is stored in the unit's memory.
• VOL + on the unit has a tactile dot. Use the tactile dot as a reference when operating the unit.

To improve FM/AM radio reception

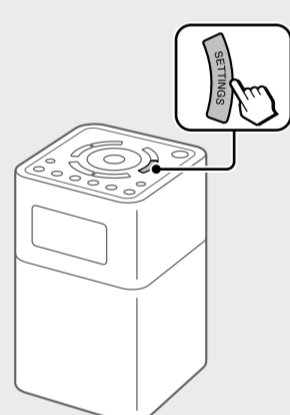


Setting the On Timer

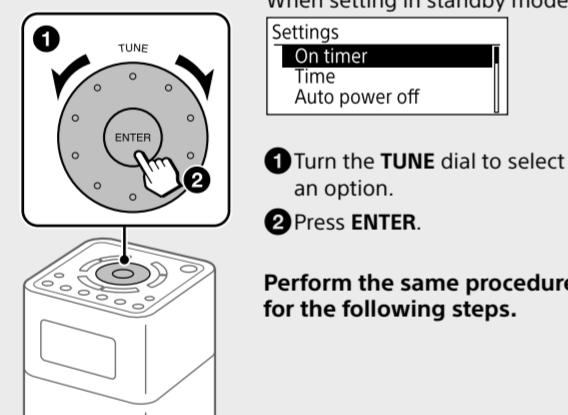
You can set the unit to turn on the radio automatically at the set time.

First set the clock. See "Getting Started" for details.

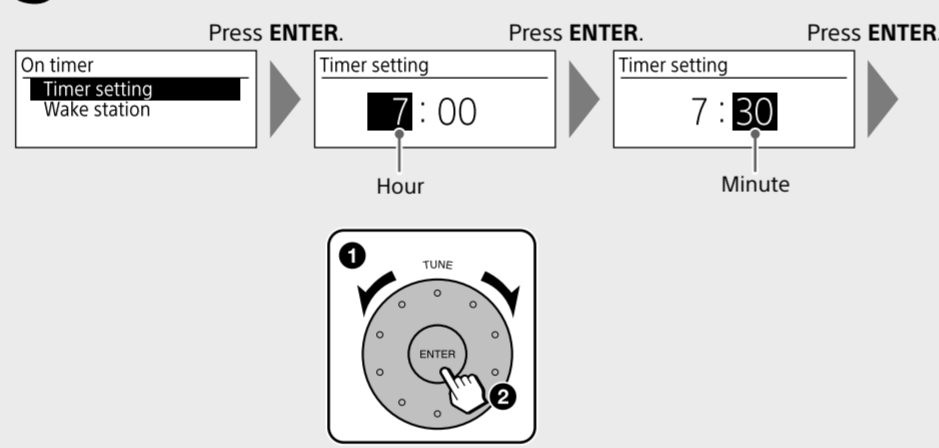
1 Press SETTINGS.



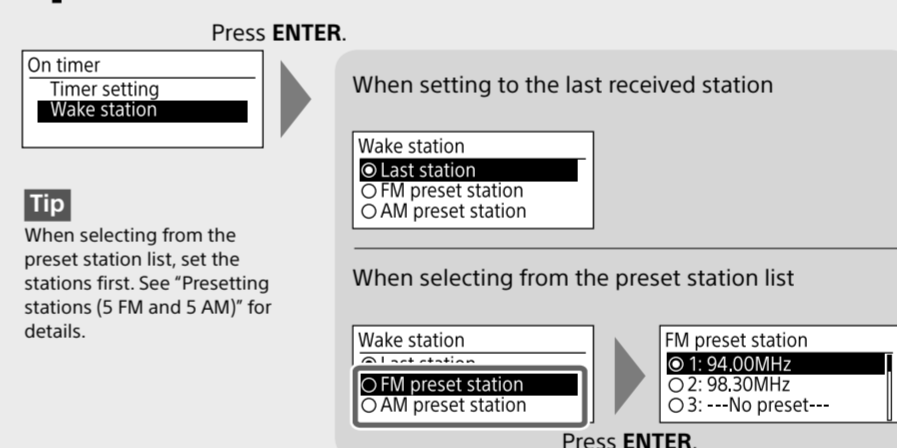
2 Select "On timer."



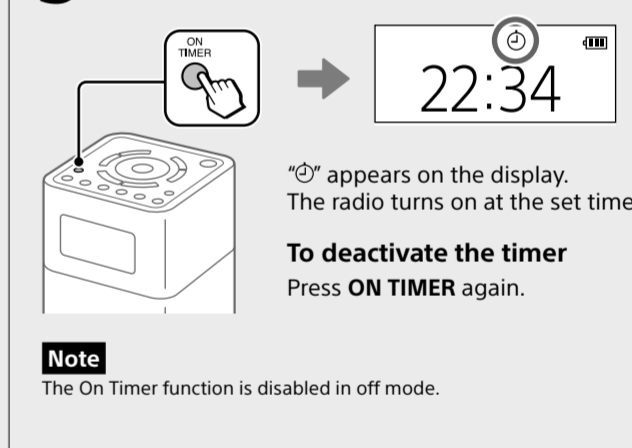
3 Set the hour and minute.



4 Set the station received at the set time.

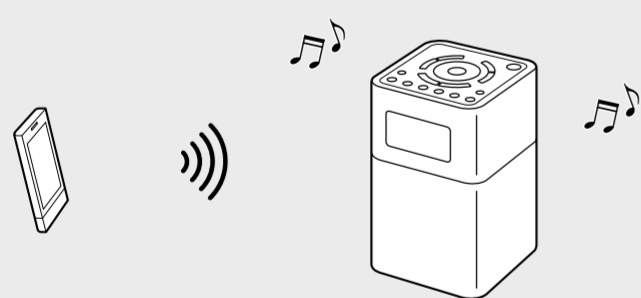


5 Activate the timer.



Listening to Music from a BLUETOOTH Device

Using the BLUETOOTH connection, you can listen to music from wirelessly connected BLUETOOTH devices such as smartphones, tablets, PCs, etc.



Compatible BLUETOOTH devices

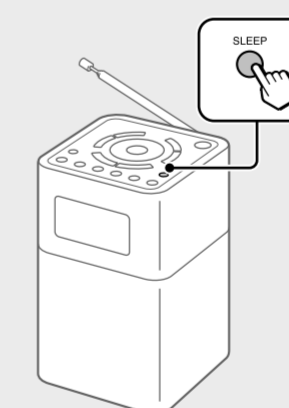
Compatibility requirements for the devices are as follows. Before using a device with this unit, check that it meets the requirements.
• Devices must support A2DP (Advanced Audio Distribution Profile) and AVRCP (Audio/Video Remote Control Profile).
• NFC capability (required only when using the NFC pairing function of the unit).

About the BLUETOOTH standby mode

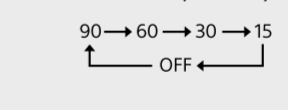
The BLUETOOTH standby mode enables the unit to turn on automatically by making a BLUETOOTH connection from a BLUETOOTH device.
See "Setting Menu Options" for details.

Tip
BLUETOOTH wireless technology operates within a range of about 10 m.

Setting the Sleep Timer



Press SLEEP repeatedly to select the desired time (in minutes).



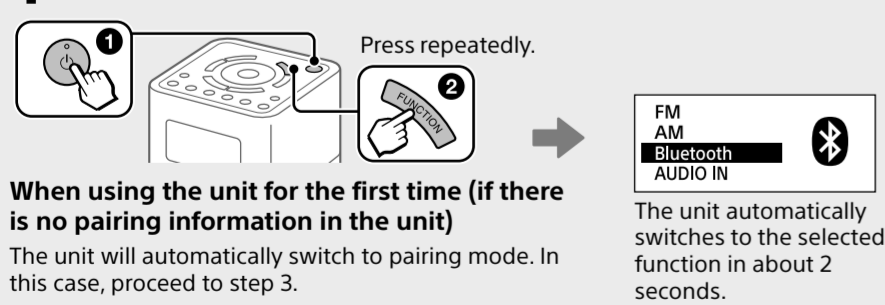
When the sleep timer is set, "SLEEP" appears on the display. The unit enters standby mode automatically after a set time has elapsed.

Tips
• The last set time is stored in the unit's memory.
• You can check the time left until the unit enters standby mode by pressing SLEEP again after setting the sleep timer.

Connecting with a BLUETOOTH device

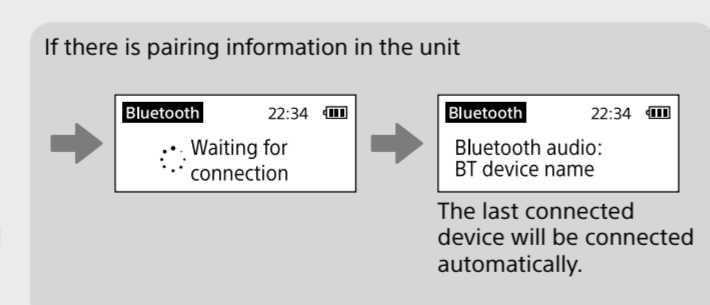
If your BLUETOOTH device has an NFC function, this procedure is unnecessary. See "Connecting by One-touch (NFC)" below.

1 Turn on the unit, and select the "Bluetooth" function.

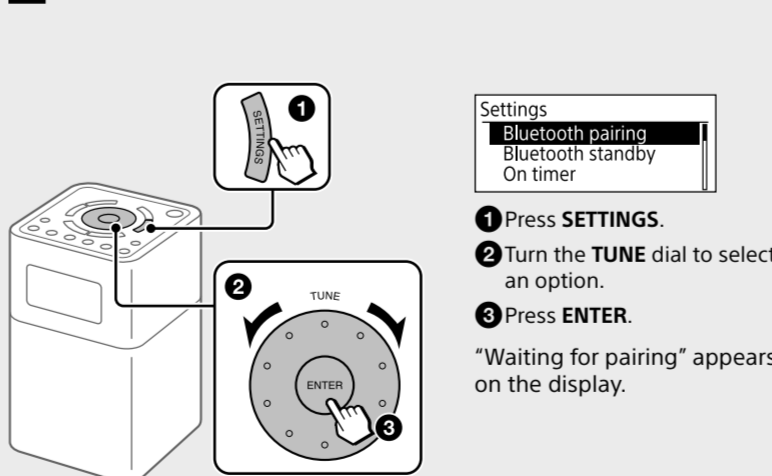


When using the unit for the first time (if there is no pairing information in the unit)
The unit will automatically switch to pairing mode. In this case, proceed to step 3.

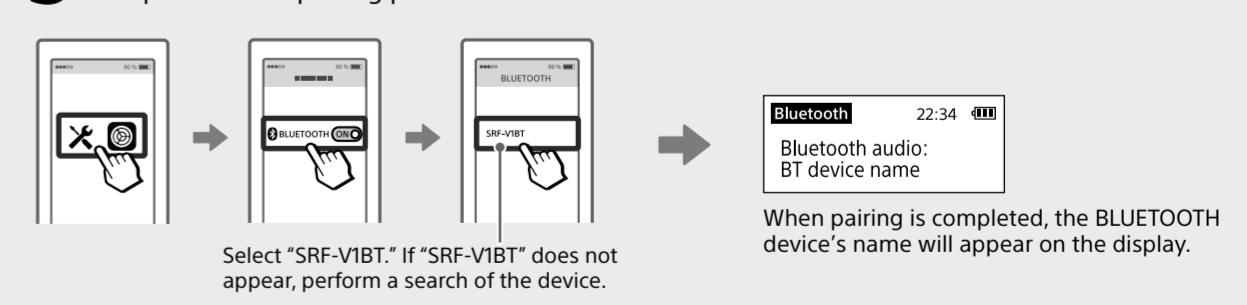
When connecting with the second and subsequent devices
Proceed to step 2.



2 Select "Bluetooth pairing."



3 On the BLUETOOTH device, activate the BLUETOOTH function and perform the pairing procedure.



For details, refer to the operating instructions supplied with the BLUETOOTH device. If you are prompted to enter a passkey, enter "0000."

To terminate the BLUETOOTH connection
Select the function other than the BLUETOOTH function.

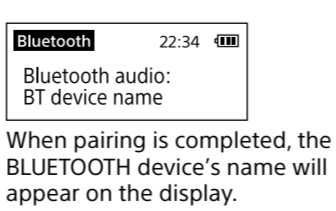
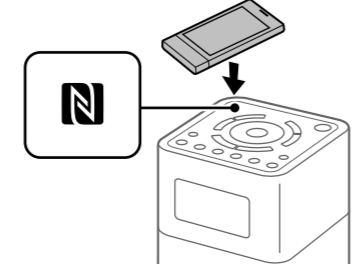
Connecting by One-touch (NFC)

Compatible smartphones
Smartphones with the NFC function built-in (OS: Android™ 2.3.3 or later, excluding Android 3.x)

1 Turn on the NFC function of the BLUETOOTH device.



2 Touch the BLUETOOTH device to the N-Mark on the unit.

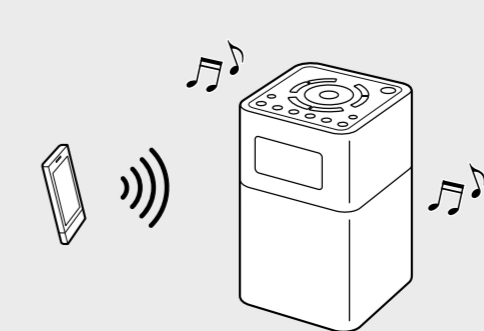


Note
If your NFC-compatible smartphone has an OS version that is older than Android 4.1.x, download and start the "NFC Easy Connect" application. "NFC Easy Connect" is a free application for Android smartphones that can be obtained from Google Play™. (The application may not be available in some countries/regions.)

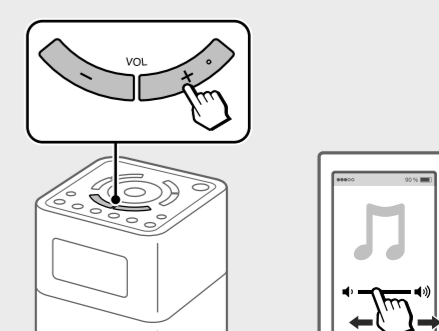
To terminate the BLUETOOTH connection
Touch the BLUETOOTH device to the N-Mark on the unit.

Listening to music

1 Start playback on the BLUETOOTH device.

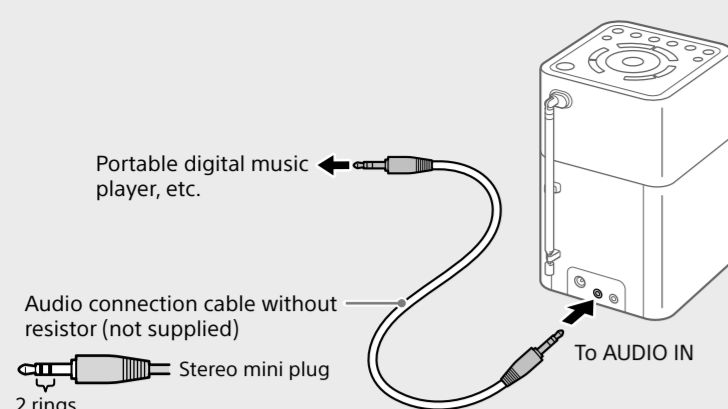


2 Adjust the volume.

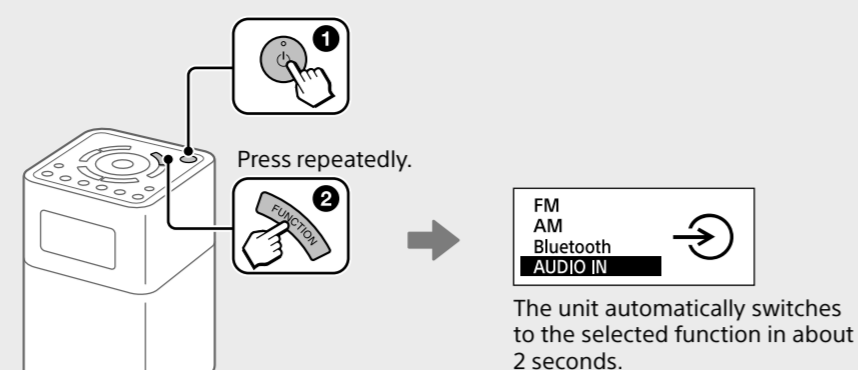


Listening to Music from an External Device

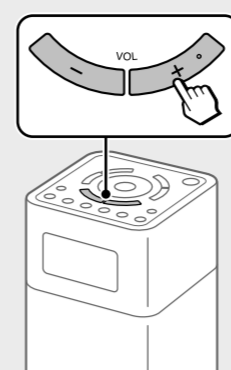
1 Connect the external device to the unit.



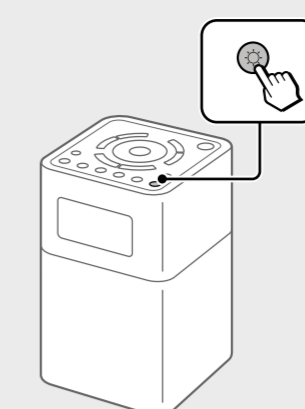
2 Turn on the unit, and select the "AUDIO IN" function.



3 Start playback on the connected device and adjust the volume.



Setting the Brightness of the Display



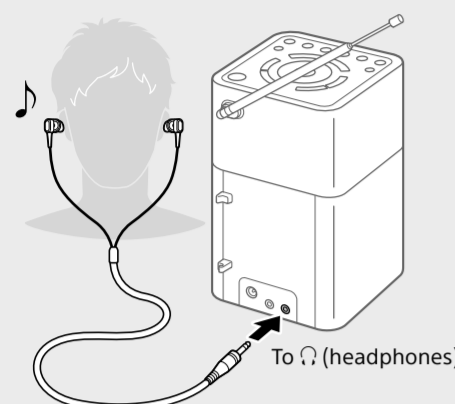
Press repeatedly to select the desired brightness.

High (default) → Middle → Low
← Off →

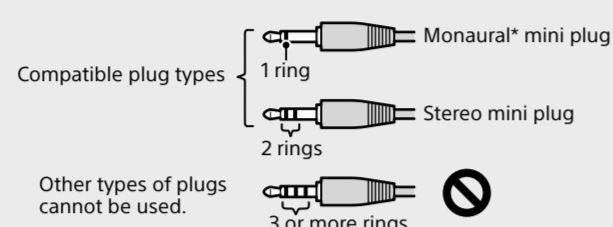
Note
When the unit is powered by the built-in battery, the backlight of the display turns off in about half a minute after operation.

Listening through Headphones

Connect headphones that have a stereo or monaural* mini plug (not supplied).



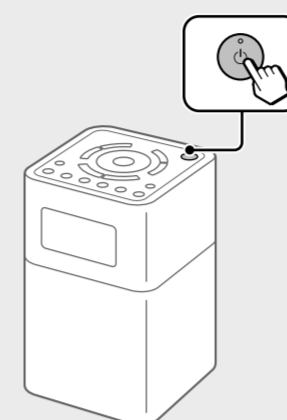
Note
Use headphones with a stereo (3-pole) or monaural (2-pole) mini plug. No sound is heard when using other types of plugs.



* When listening to stereo sound using monaural headphones, you will hear sound from the left channel only.

Setting to Off Mode

You can set the unit to off mode to reduce the power consumption if you do not use the unit.



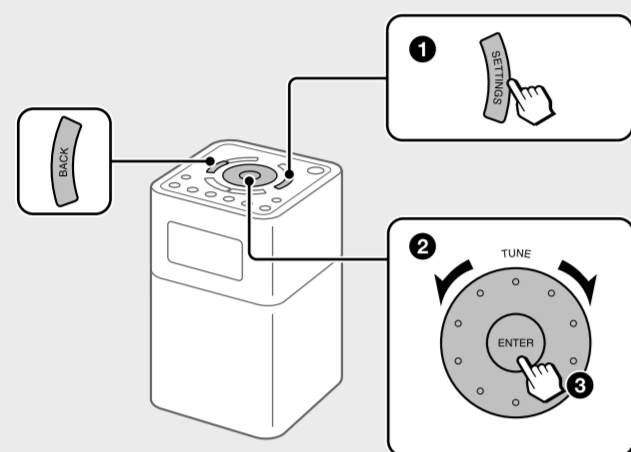
Press and hold for about 2 seconds to set to off mode. The display turns off.

Note
The On Timer function is disabled in off mode.

Tip
When pressing while the unit is turned on, the unit enters standby mode. In standby mode, the backlight of the display can be turned on if desired and the On Timer function is enabled.

Setting Menu Options

Basic Operations:



To go back to the upper menu level
Press **BACK**.

To exit the setting menu
Press **SETTINGS** again.

BLUETOOTH options

BLUETOOTH options can be set when the "Bluetooth" function is selected.

Bluetooth pairing

See "Connecting with a BLUETOOTH device."

Bluetooth standby

When the BLUETOOTH standby mode is set to "On," the unit enters waiting mode for a BLUETOOTH connection even when the unit is in standby mode. When making a BLUETOOTH connection from a BLUETOOTH device, the unit turns on automatically.

- Tips**
- Set the BLUETOOTH standby mode to "Off" to reduce the power consumption when the unit is in standby mode.
 - The power indicator lights up in amber while the unit is in standby mode, and when the BLUETOOTH standby mode is turned on.

Note
If the AC adaptor is unplugged, the BLUETOOTH standby mode is disabled.

Other options

On timer

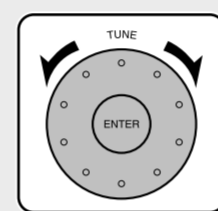
See "Setting the On Timer."

Sound

You can adjust the sound level.

Treble: Adjusts the level of high-pitched sound.

Bass: Adjusts the level of low-pitched sound.



Time

Time setting: Sets the clock. See "Getting Started" for details.

12H/24H: Select the clock display mode, 12-hour clock or 24-hour clock.

Note
The clock will be reset if the AC adaptor is unplugged and the built-in battery is completely exhausted.

Beep

Select "On" to activate the beep sound when you operate the unit.

Auto power off

When "Auto power off" is set to "Enable (15min)," the unit enters standby mode automatically in about 15 minutes if there is no operation or audio signal output.

Initialize

Select "OK" to initialize the unit to the factory default settings. All settings, such as preset radio stations and the pairing registration information, will be deleted.

WARNING

Do not expose the appliance to naked flame sources (for example, lighted candles).

Excessive sound pressure from earphones and headphones can cause hearing loss.

Precautions

- Operate the unit only on the power sources specified in "Specifications." For AC operation, use only the supplied AC adaptor. Do not use any other type of AC adaptor.
- Failure to use the supplied AC adaptor may cause the unit to malfunction, as the polarity of the plugs of other manufacturers may be different.



- When operating the unit on the built-in battery, it is recommended that you remove the AC adaptor from the wall outlet and the DC IN jack. Disconnect the plug of the external power source before operating the unit.
- Avoid exposure to temperature extremes, direct sunlight, moisture, sand, dust or mechanical shock. Never leave in a car parked in the sun.
- Do not expose the unit to strong impact or excessive force. A glass material is used for the display in some models. If the glass chips or cracks, it may cause injury. In that case, stop using the unit immediately and make sure not to touch the damaged parts.
- Should any solid object or liquid fall into the unit, disconnect the AC adaptor, and have the unit checked by a qualified personnel before operating it any further.
- Since a strong magnet is used for the speakers, keep personal credit cards using magnetic coding or spring-wound watches away from the unit to prevent possible damage from the magnetism.
- To clean the casing, use a soft dry cloth. Do not use any type of solvent, such as alcohol or benzene, which may damage the finish.
- Do not operate the unit with wet hands since it may cause a short circuit.
- Make sure not to splash water on the unit. This unit is not waterproof.
- When you do not use the unit for a long time, charge the battery every 6 months.
- Under certain circumstances, especially when the air is very dry, it is not uncommon to experience a discharge of static electricity, or shock, when your body comes in contact with another object, in this case the ear buds touching your ear(s). The energy from this natural discharge is extremely small and is not emitted by your product but rather a natural environmental occurrence.
- Listening with this unit at high volume may affect your hearing. For traffic safety, do not use this unit while driving or cycling.

If you have any questions or problems concerning your unit, please consult your nearest Sony dealer.

Troubleshooting

Should any problems persist after you have made the following checks, consult your nearest Sony dealer.

General

Display is dim, or no indication is displayed.

- The unit is being used in extremely high or low temperatures or in a place with excessive moisture.

The volume cannot be turned up when the unit is powered by the built-in battery.

- When the remaining battery level gets low (when the battery icon is empty), the maximum volume level is limited to "22." Charge the unit by connecting the AC adaptor (supplied).

The volume level is low in the "Bluetooth" function or the "AUDIO IN" function compared with the volume level when listening to the radio.

- Adjust the volume on the connected device.
- By default, this unit is set to enter standby mode automatically after about 15 minutes of no operation or audio signal output. See "Auto power off" in "Setting Menu Options" for details.

Radio

Very weak or interrupted sound, or unsatisfactory reception.

- If you are in a building, listen near a window.
- Extend the antenna and adjust the length and the angle for best reception.
- If a mobile phone is placed close to the unit, a loud noise may be heard from the unit. Keep the phone away from the unit.

A desired station cannot be received when a preset button is pressed.

- Make sure you have selected the desired band (FM or AM) before you press the preset button. One station for each band can be set to each button.
- You may have held down the preset button to which the station was assigned, causing the station to be replaced by a new one. Assign the desired station again.
- Preset buttons cannot be used when the setting menu is displayed.
- If you have moved to another region, assign the new station to a preset button.

BLUETOOTH

There is no sound.

- Make sure that this unit is not too far from the BLUETOOTH device, or that this unit is not receiving interference from a wireless LAN, another 2.4 GHz wireless device, or a microwave oven.
- Check that the BLUETOOTH connection was completed properly between this unit and the BLUETOOTH device.
- Perform pairing again. (See "Connecting with a BLUETOOTH device.")
- Keep away from metal objects or surfaces.
- Make sure that the BLUETOOTH function is activated on the BLUETOOTH device.

The sound skips or the correspondence distance is short.

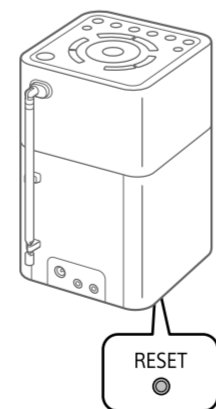
- If a device that generates electromagnetic radiation, such as a wireless LAN, other BLUETOOTH device(s), or a microwave oven is nearby, move away if possible. Or use the device and the unit away from such sources.
- Remove any obstacle between this unit and the device or move the device and the unit away from the obstacle.
- Locate this unit and the device as close to each other as possible.
- Re-position this unit.
- Try using the BLUETOOTH device in another position.

A connection cannot be established.

- Depending on the device to be connected, it may require some time to start communication.
- Perform pairing again. (See steps 2 and 3 of "Connecting with a BLUETOOTH device.")
- To listen to music on a device that does not have a BLUETOOTH function, such as a PC without BLUETOOTH function, connect the device to the AUDIO IN jack on the unit. (See "Listening to Music from an External Device" for details.)
- A BLUETOOTH connection with two BLUETOOTH devices cannot be established at the same time.
- Pairing fails.**
 - Bring the BLUETOOTH device closer to the unit.
 - Make sure that the BLUETOOTH function is activated on the BLUETOOTH device.
 - If the BLUETOOTH connection cannot be established after pairing is completed, perform step 3 of "Connecting with a BLUETOOTH device."
 - Delete the model name of this unit from the BLUETOOTH device and perform pairing again. (See steps 2 and 3 of "Connecting with a BLUETOOTH device.")
- Pairing using the NFC function fails.**
 - Try pairing manually. (See "Connecting with a BLUETOOTH device.") Some NFC-compatible smartphones may not be paired using the NFC function of this unit, depending on the features or specifications of the device.
 - Relaunch "NFC Easy Connect" and move the smartphone slowly over the N-Mark.
 - Check that the smartphone meets the compatibility requirements. (See "Compatible smartphones" in "Connecting by One-touch (NFC).")

If the unit still does not operate properly

Try pressing **RESET** on the bottom using a thin rod. The unit will restart, retaining the user-configured settings.



If maintenance service is performed
All user-configured settings, such as preset radio stations, the sleep timer, and the clock, may be initialized. Please note your settings in case you need to configure them again.

Messages

No preset

- No station in the selected band (FM or AM) has been preset to the pressed button.

Specifications

Operating temperature range

5°C – 35°C

Time display

24-hour system or 12-hour system

Frequency range

FM: 87.5 MHz – 108 MHz (0.05 MHz step)
AM: 531 kHz – 1,602 kHz (9 kHz step)

Intermediate frequency

FM: 128 kHz
AM: 45 kHz

Speaker

Approx. 45 mm dia., 4 Ω, stereo

Audio power output

2.5 W + 2.5 W (when the unit is powered by the supplied AC adaptor)
1.5 W + 1.5 W (when the unit is powered by the built-in battery)

BLUETOOTH

Communication System
BLUETOOTH Specification version 4.1

Output
BLUETOOTH Specification Power Class 2

Maximum output power < 20.0 dBm

Maximum communication range Line of sight approx. 10 m^{*1}

Frequency band 2.4 GHz band (2,400 GHz - 2,4835 GHz)

Modulation method FHSS

Compatible BLUETOOTH Profiles^{*2} A2DP (Advanced Audio Distribution Profile) AVRCP (Audio/Video Remote Control Profile) Supported Codec^{*3} SBC^{*4}

Transmission range (A2DP) 20 Hz - 20,000 Hz (Sampling frequency 44.1 kHz)

^{*1} The actual range will vary depending on factors such as obstacles between devices, magnetic fields around a microwave oven, static electricity, reception sensitivity, antenna's performance, operating system, software application, etc.

^{*2} BLUETOOTH standard profiles indicate the purpose of BLUETOOTH communication between devices.

^{*3} Codec: Audio signal compression and conversion format

^{*4} Subband Codec

NFC

Maximum output power < 60 dBμA/m at 10 m

Operating frequency 13.56 MHz

Input

AUDIO IN jack (ø 3.5 mm, stereo mini jack)

Output

⌂ (headphones) jack (ø 3.5 mm, stereo mini jack)

Power requirements

Built-in lithium-ion rechargeable battery

Power

DC 5.8 V 2.0 A (using the supplied AC adaptor connected to AC 100 V – 240 V, 50 Hz/60 Hz power supply) or, using built-in lithium-ion battery

Usage life of lithium-ion battery

BLUETOOTH: Approx. 32 hours^{*1}
FM: Approx. 31 hours^{*1}
AM: Approx. 15.5 hours^{*2}

^{*1} When the specified music source is used and the volume level of the unit is set to the following
— BLUETOOTH: 20
— FM: 25
— AM: 30

BLUETOOTH: Approx. 15 hours^{*2}
FM: Approx. 25.5 hours^{*2}
AM: Approx. 15.5 hours^{*2}

^{*2} When the specified music source is used and the volume level of the unit is set to maximum

Power consumption

At the standby mode 0.6 W or less

(when the brightness of the display is set high and the BLUETOOTH standby mode is set to on)

At the off mode 0.2 W or less

Dimensions

Approx. 106 mm × 172 mm × 117 mm (W/H/D) including projecting parts and controls

Mass

Approx. 880 g

Supplied accessories

AC adaptor (AC-E5820) (1)
Warranty (1) (Europe only)

Design and specifications are subject to change without notice.

License and Trademark Notice

- The BLUETOOTH word mark and logos are owned by the Bluetooth SIG, Inc. and any use of such marks by Sony Corporation is under license.
- The N Mark is a trademark or registered trademark of NFC Forum, Inc. in the United States and in other countries.
- Android™ and Google Play™ are trademarks of Google Inc.
- Other trademarks and trade names are those of their respective owners. In this manual, ™ and ® marks are not specified.