

Multi Audio Player System

Quick Start Guide

Enjoy Music via a Wireless Network

MAP-S1

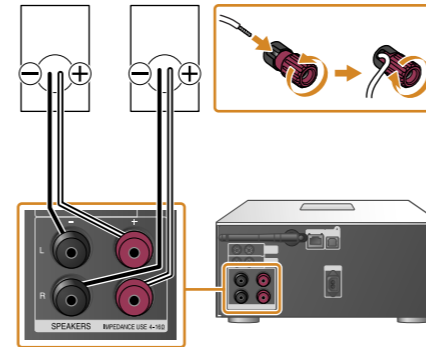


©2014 Sony Corporation Printed in China

First, prepare the unit and remote

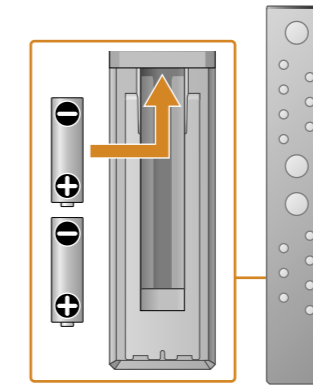
Connecting the speakers

Connect the speakers to the SPEAKERS L/R (left/right) connectors on the rear of the unit. Firmly connect the right speaker cord to R, and the left speaker cord to L.



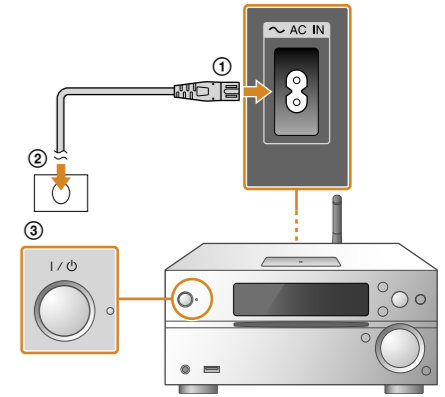
Inserting the batteries

Insert two supplied R03 (size AAA) batteries, ● side first, matching the polarities shown below.



Turning on the unit

- 1 Connect the power cord (supplied) to the rear of the unit.
- 2 Connect the power cord to the wall outlet.
- 3 Press I/⏻ of the unit to turn on the unit.



This Quick Start Guide explains how to set up a wireless network using SongPal* and listen to music in your Xperia™/iPhone via a wireless network.

Xperia

To listen to the music in your Xperia

- ▶ See this side.
- For other Android smartphones, follow the steps from 1 to 4 on this side to connect your smartphone to a Wi-Fi network.

iPhone

To listen to the music in your iPhone

- ▶ See the reverse side.

* SongPal is an app for controlling various Sony audio devices with your smartphone/iPhone.

Xperia

Connecting to a Wireless Network by SongPal

1

Confirm that your Xperia is connected to the wireless network.

Record the SSID and password of your router in the spaces below.

SSID:

Password:

For details, refer to the operating instructions of your router.

2

Install SongPal on your Xperia, then launch the app.

Search for "SongPal" at Google Play™ Store.

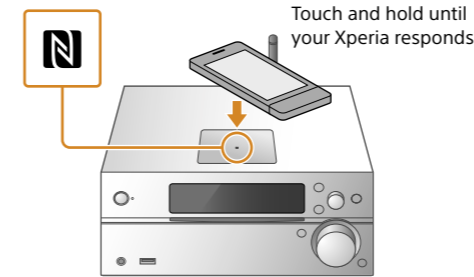


After SongPal is launched, follow the app's instructions.

3

Make a BLUETOOTH connection between the unit and your Xperia by following the app's instructions.

Touch the N-Mark on the unit with your Xperia. Pairing is completed in about one minute.

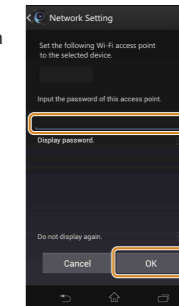


If your Xperia does not support the NFC function, see "When NFC is not available in your Xperia."

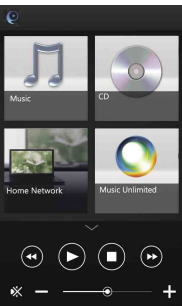
4

Configure the Wi-Fi settings by following the app's instructions.

Enter the password that you have recorded in step 1, then tap [OK].



The connection is established in about two minutes. When the connection is completed, the Wi-Fi lights up in the display window. Press I/⏻ of the unit to turn it off, and then restart it.



The design of the app may change without notice.

5

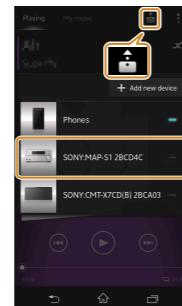
Play the music.

- 1 Launch [WALKMAN®] application* on your Xperia.



* Your Xperia may not have the [WALKMAN®] application. In that case, this function cannot be used.

- 2 Tap [SONY:MAP-S1] select [SONY:MAP-S1], then start playback.

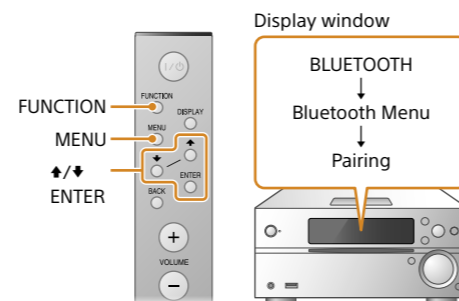


"HOME NETWORK" appears on the display window during music play.

* Your Xperia may need to disable [Auto-select wireless option] of [Throw settings]. For details, refer to the User guide of Xperia.

When NFC is not available in your Xperia

Use the remote to set the unit in pairing mode. The status of the unit is shown in the display window.

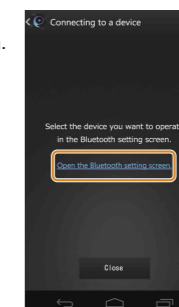


- 1 Press FUNCTION on the remote to select "BLUETOOTH."
- 2 Press MENU on the remote. If MENU is pressed twice, the operation is canceled.
- 3 Press ⬆/⬆ on the remote to select "Bluetooth Menu," then press ENTER on the remote.
- 4 Press ⬆/⬆ on the remote to select "Pairing," then press ENTER on the remote.
- 5 Press ⬆/⬆ on the remote to select "Ok," then press ENTER on the remote.

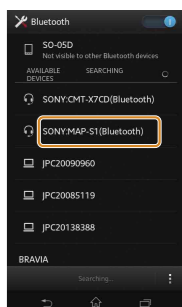
When "Pairing" starts flashing in the display window, the unit enters pairing mode.

Make a BLUETOOTH connection from your Xperia.

- 1 Tap [Open the Bluetooth setting screen].



- 2 Tap [SONY:MAP-S1(Bluetooth)]. Pairing is completed in about one minute.

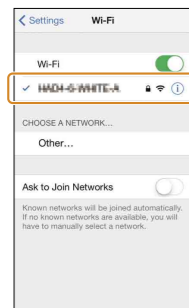


Proceed to step 4.

Connecting to a Wireless Network by SongPal

1

Confirm that your iPhone is connected to the wireless network.



2

Install SongPal on your iPhone, then launch the app.

Search for "SongPal" at the App Store.



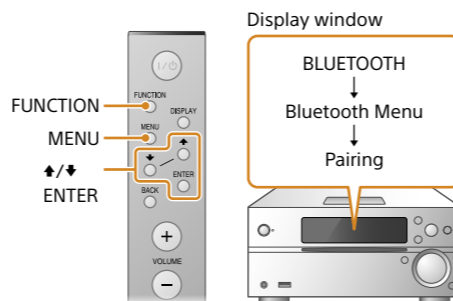
After SongPal is launched, follow the app's instructions.



3

Set the unit in pairing mode.

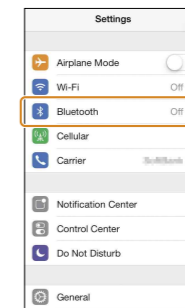
Use the remote to set the unit in pairing mode. The status of the unit is shown in the display window.



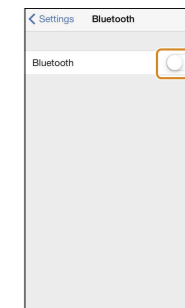
4

Make a BLUETOOTH connection from your iPhone.

① Tap [Settings] → [Bluetooth].



② Turn on BLUETOOTH.

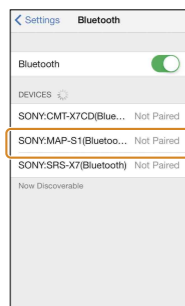


- ① Press FUNCTION on the remote to select "BLUETOOTH."
 - ② Press MENU on the remote. If MENU is pressed twice, the operation is canceled.
 - ③ Press ▲/▼ on the remote to select "Bluetooth Menu," then press ENTER on the remote.
 - ④ Press ▲/▼ on the remote to select "Pairing," then press ENTER on the remote.
 - ⑤ Press ▲/▼ on the remote to select "Ok," then press ENTER on the remote.
- When "Pairing" starts flashing in the display window, the unit enters pairing mode.

5

Start SongPal on your iPhone.

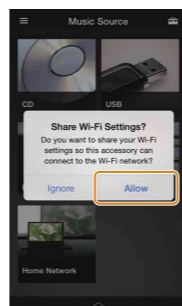
③ Tap [SONY:MAP-S1(Bluetooth)]. Pairing is completed in about one minute.



When the following screen appears, tap [OK].



Tap [Allow]. The connection is established in about two minutes. When the connection is completed, the Wi-Fi lights up in the display window. Press I/O of the unit to turn it off, and then restart it.

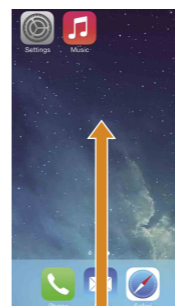


The design of the app may change without notice.

6

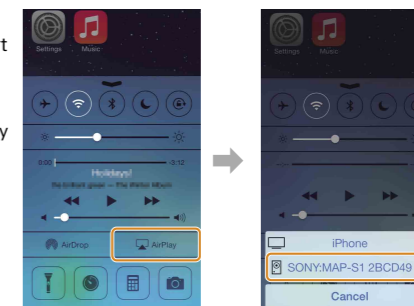
Play the music.

① Close SongPal on your iPhone, and then swipe up from the bottom of the screen to display the Control Center.



② Tap [AirPlay], select [SONY:MAP-S1], then start playback.

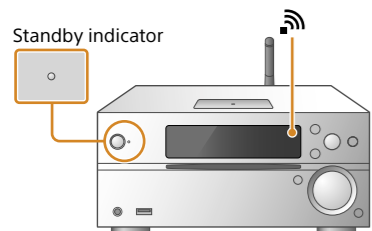
"AirPlay" appears on the display window during music play.



Making a Wireless Connection with the WPS button on your Wireless LAN Router

1

Check that the network (LAN) cable (not supplied) is disconnected from the unit, then turn on the unit.

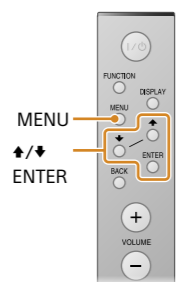


The standby indicator lights up in yellow green and starts flashing in the display window after about two minutes.

The Wi-Fi connection can also be made using a PC, or the network can be wired. For details, refer to the Operating Instructions.

2

Set the unit to WPS mode by performing the following procedures.

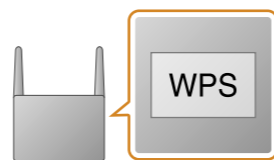


- ① Press MENU on the remote. If MENU is pressed twice, the operation is canceled.
- ② Press ▲/▼ on the remote to select "Network Menu," then press ENTER on the remote.
- ③ Press ▲/▼ on the remote to select "WPS," then press ENTER on the remote.
- ④ When "Ok" appears on the display window, press ENTER on the remote.

"WPS" flashes in the display window.

3

Press and hold the WPS button* for more than 3 seconds.



"Connect" flashes after "WPS" flashes for several tens of seconds in the display window, after which Wi-Fi will light once connection is completed.

* For details, refer to the operating instructions of the wireless LAN router.

About "SongPal"

Sound settings
You can easily customize your sound.

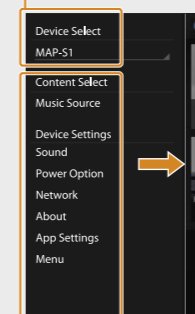
Music service
You can enjoy various music services.

Controlling devices on your home network
You can play music stored in your PC or DLNA server over your network.

Operations for a CD inserted in the unit, or a device connected via USB
You can play a CD that is inserted in the unit, or music in a device connected to the USB connector.

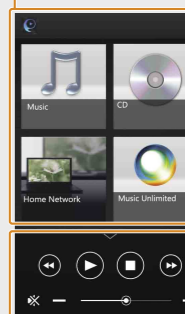
What you can control with "SongPal" varies depending on the connected device. The specification and design of the app may change without notice.

Device Select
Select a "SongPal" compatible device.



Settings of the connected device
Various sound/network settings are displayed. This menu can be displayed from any screen by flicking right.

Home screen
Displays the functions of the selected device, music services, and apps installed on your smartphone/iPhone.



Mini player
Controller for the selected function.