

STR-DA5800ES

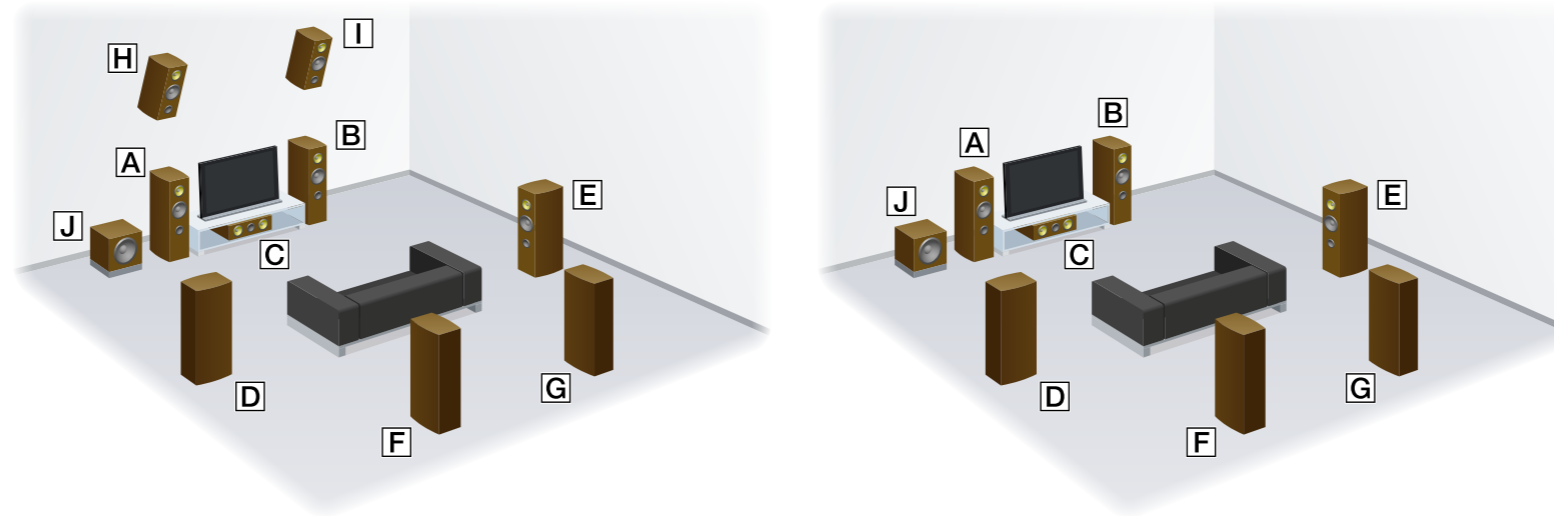
Quick Setup Guide

This Quick Setup Guide describes how to connect speakers, a subwoofer, a monitor, and a Blu-ray Disc Player so that you can enjoy multi-channel surround sound. Refer to the operating instructions supplied with the receiver for details.



1 Installing speakers

The illustration on the left shows an example of a 9.1 channel speaker system using 9 speakers (front, front high, surround, surround back, and center speakers) and one subwoofer. The illustration on the right shows an example of a 7.1 channel speaker system using 7 speakers (front, surround, surround back, and center speakers) and one subwoofer.



- A Front left speaker
- B Front right speaker
- C Center speaker
- D Surround left speaker
- E Surround right speaker
- F Surround back left speaker
- G Surround back right speaker
- H Left high speaker
- I Right high speaker
- J Subwoofer

1 Installing speakers

2 Connecting the speakers

3 Connecting the monitor

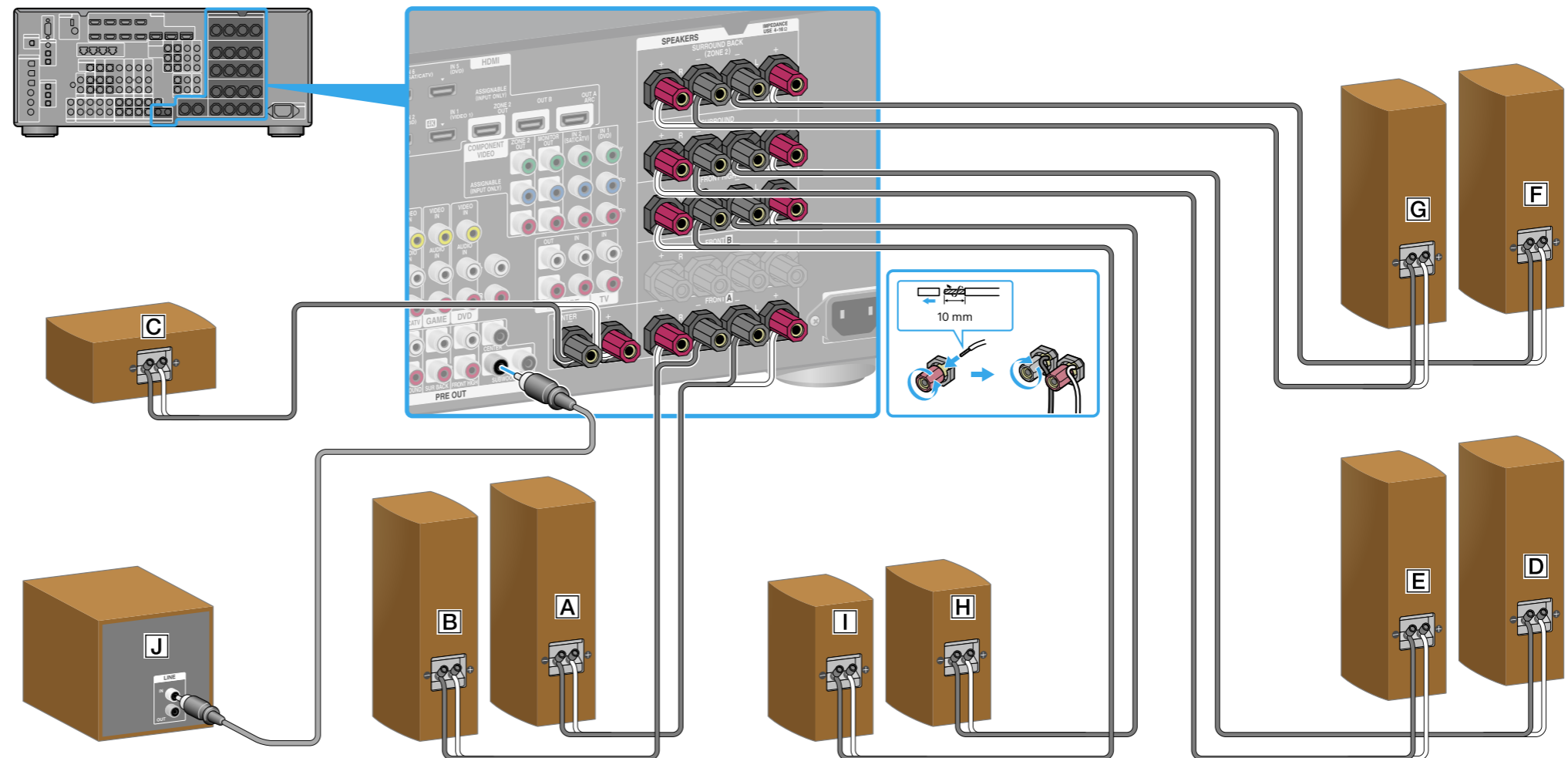
4 Connecting a Blu-ray Disc Player

5 Connect all power cords last

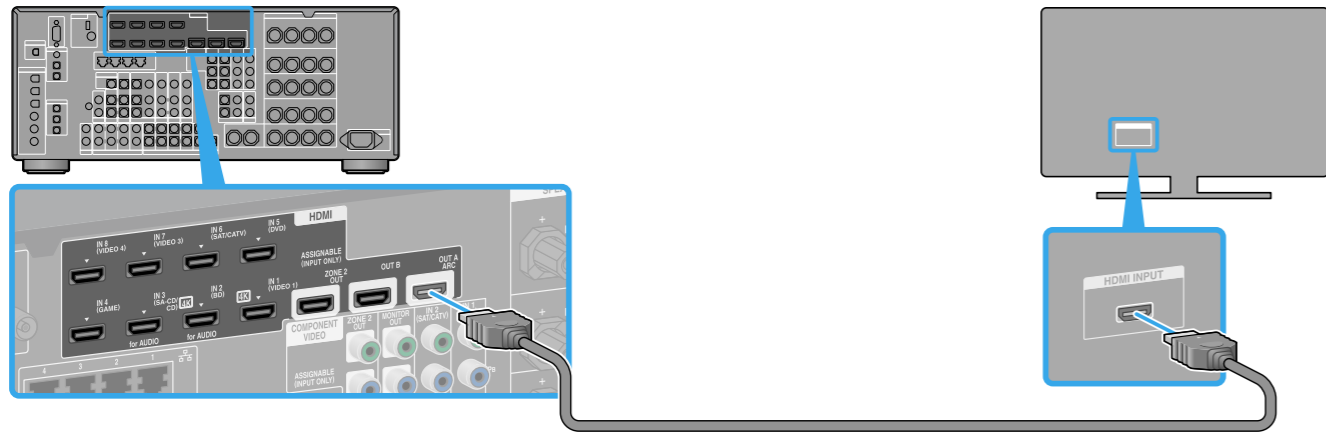
6 Turning on the receiver

7 Setting up the receiver

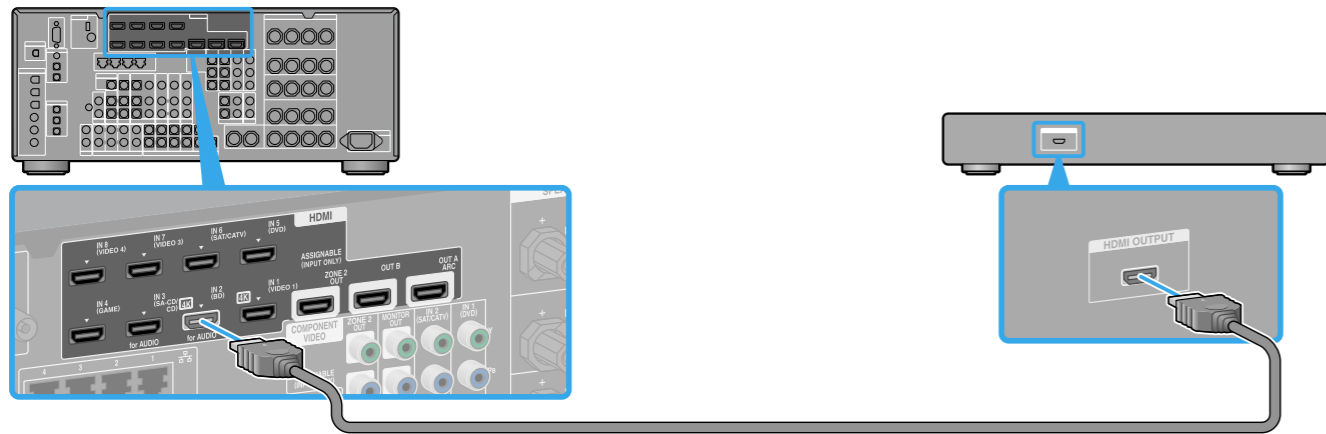
2 Connecting the speakers



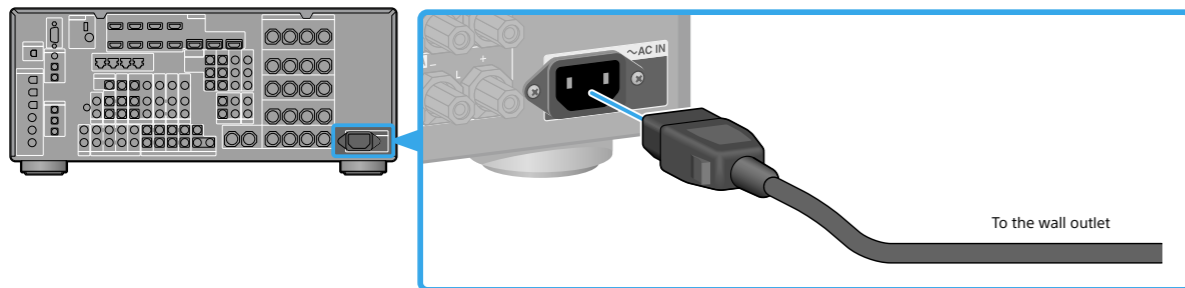
3 Connecting the monitor



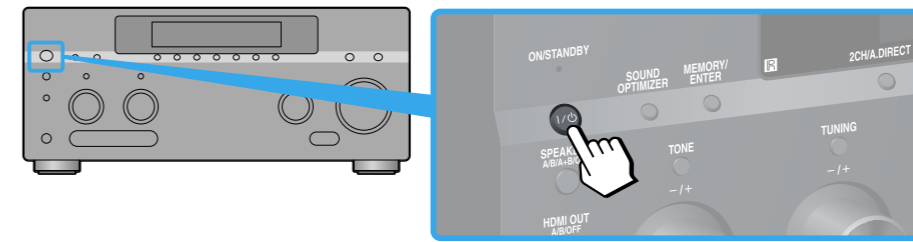
4 Connecting a Blu-ray Disc Player



5 Connect all power cords last

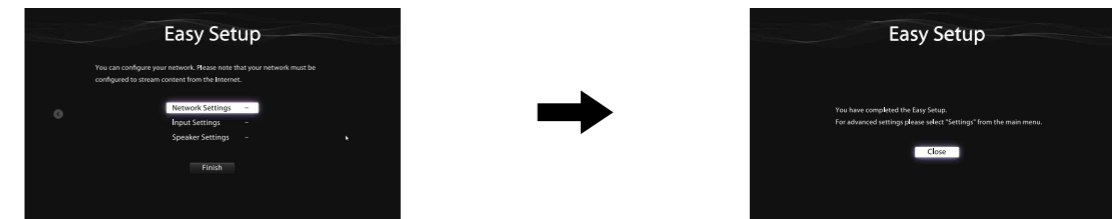


6 Turning on the receiver



7 Setting up the receiver

Switch the input of the TV to the input to which the receiver is connected. When you turn on the receiver for the first time, the EULA screen appears on the TV screen. Agree to EULA to proceed to the Easy Setup screen, then set up the receiver in accordance with the instructions on the Easy Setup screen.

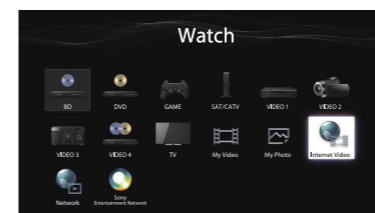


After performing steps 1 to 7, start playback on the Blu-ray Disc Player.

Notes

- When you start operating the receiver, make sure to press AMP on the remote control first. Otherwise, operations that follow may not be aimed at the receiver.
- Set up the Blu-ray Disc Player so that it is able to output multi-channel audio signals. For a Sony Blu-ray Disc Player, check that "Audio (HDMI)," "DSD Output Mode," "Dolby Digital/DTS," "Dolby Digital," and "DTS" are set to "Auto," "On," "Bitstream," "Dolby Digital," and "DTS," respectively (as of August 1, 2012).

You can enjoy Internet video content easily using the receiver.



After making the connections and the settings shown above, if you connect the receiver to a router via a LAN cable, you can enjoy Internet video by simply selecting the content you want. For details on the connection of the LAN cable, refer to "5: Connecting to the network" in the operating instructions supplied with the receiver. For details on the operation, refer to "Internet video" in the operating instructions supplied with the receiver.