

Wireless Speaker System

Operating Instructions

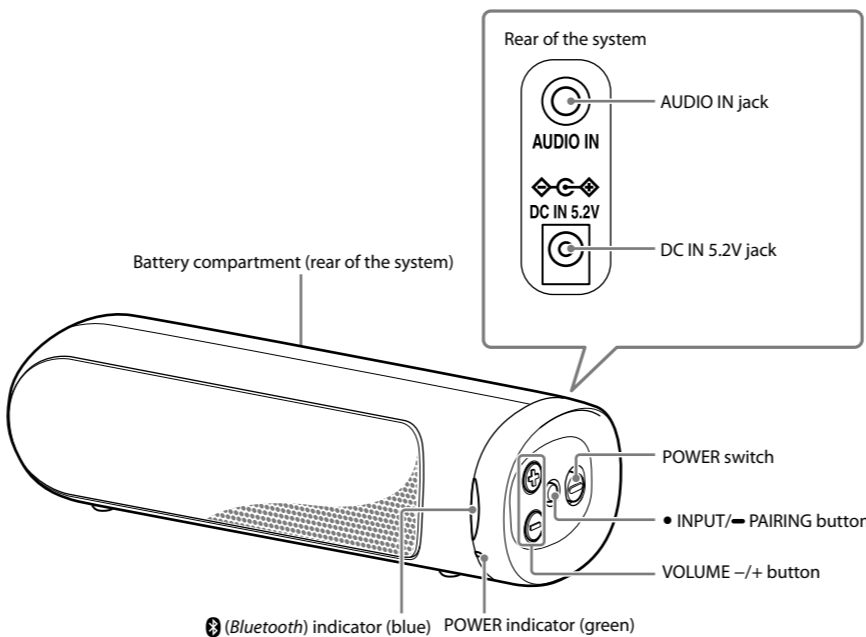


4-430-852-11(1)



©2012 Sony Corporation Printed in Malaysia

SRS-BTD70



English Wireless Speaker System

Before operating the system, please read this guide thoroughly and retain it for future reference.

WARNING

To reduce the risk of fire or electric shock, do not expose this apparatus to rain or moisture.

To reduce the risk of electrical shock, do not open the cabinet. Refer servicing to qualified personnel only.

To reduce the risk of fire, do not cover the ventilation opening of the apparatus with newspapers, tablecloths, curtains, etc. Do not place the naked flame sources such as lighted candles on the apparatus.

To reduce the risk of fire or electric shock, do not expose this apparatus to dripping or splashing, and do not place objects filled with liquids, such as vases, on the apparatus.

Do not install the appliance in a confined space, such as a bookcase or built-in cabinet.

As the main plug of the AC adaptor is used to disconnect the AC adaptor from the mains, connect the system to an easily accessible AC outlet. Should you notice an abnormality in the system, disconnect the main plug from AC outlet immediately.

The system is not disconnected from the mains as long as it is connected to the AC outlet, even if the system itself has been turned off.

On Copyrights and Licenses

The Bluetooth® word mark and logos are owned by the Bluetooth SIG, Inc. and any use of such marks by Sony Corporation is under license. Other trademarks and trade names are those of their respective owners.

CAUTION

You are cautioned that any changes or modifications not expressly approved in this manual could void your authority to operate this equipment.

Precautions

Notes when using with a mobile phone

- You cannot use this system to talk over the telephone, even if a Bluetooth connection between this system and a mobile phone is made.
- For details on operation of your mobile phone when receiving a telephone call while transmitting the sound using the Bluetooth connection, refer to the operating instructions supplied with the mobile phone.

On safety

The nameplate indicating Sony trademark, model number and electrical rating is located on the bottom exterior of this system.

- Before operating the system, be sure that the operating voltage of the system is identical with that of your local power supply.

Where purchased	Operating voltage
All countries/regions	100 V – 240 V AC, 50/60 Hz

Notes on the AC adaptor

- When connecting or disconnecting the AC adaptor, turn off the system beforehand. Otherwise, it may cause malfunction.
- Use only the supplied AC adaptor. To avoid damaging the system, do not use any other AC adaptor.



Polarity of the plug

- Plug the AC adaptor into a nearby wall outlet (mains). In the case of a problem, unplug it from the wall outlet (mains) immediately.
- Do not install the AC adaptor in a confined space, such as a bookcase or built-in cabinet.
- To reduce the risk of fire or electric shock, do not expose the AC adaptor to dripping or splashing, and do not place objects filled with liquids, such as vases, on the AC adaptor.

On placement

- Do not set the speaker in an inclined position.
- Do not leave the system in a location near heat sources, or in a place subject to direct sunlight, excessive dust, moisture, rain or mechanical shock.
- Do not expose the battery to excessive heat such as direct sunlight, fire or the like.

On operation

- Do not insert any small objects, etc., into the jacks or ventilation hole on the rear of the system. The system may short out or malfunction.

On cleaning

- Do not use alcohol, benzene, or thinner to clean the cabinet.

Others

- If you have any questions or problems concerning this system that are not covered in this manual, please consult your nearest Sony dealer.

Function of Parts

POWER switch

Turns the system on/off.

INPUT/PAIRING button

Press to use the Bluetooth connection or pair with a Bluetooth device. Press also to listen to the sound from the device connected to the AUDIO IN jack.

VOLUME +/- button

Adjusts the volume. The POWER indicator (green) flashes three times when the volume is set to minimum or maximum.

Bluetooth indicator (blue)

Lights up or flashes depending on the communication status. For details, see the following section, "Indications of the Bluetooth function."

POWER indicator (green)

Lights up when the system is turned on. Flashes during battery operation if battery power is low.

AUDIO IN jack

Connects to the headphone jack of a portable audio device, computer, etc., using the supplied connecting cord.

DC IN 5.2V jack

Connects the supplied AC adaptor.

Battery compartment

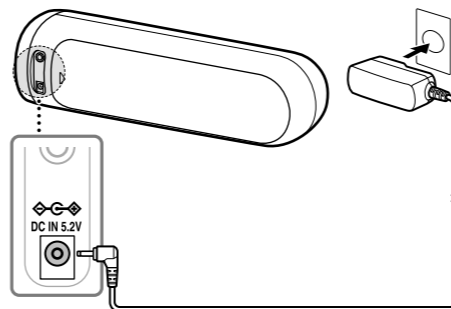
Insert three LR6 (size AA) batteries (not supplied).

Indications of the Bluetooth function

Status	Bluetooth indicator (blue)
Pairing with a device	Flashes quickly
Searching for a device	Flashes
Connected to a device	Lights up
AUDIO IN mode	Off

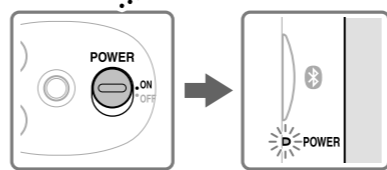
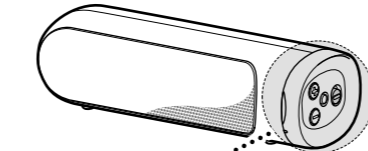
Turning the System on/off

- 1 Connect the supplied AC adaptor.



- 2 Turn the POWER switch to ON.

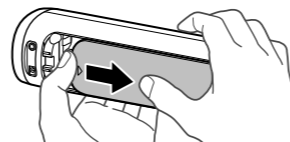
The POWER indicator (green) lights up.



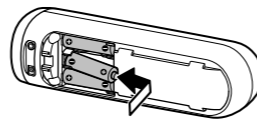
The indicator lights up.

To use with LR6 (size AA) batteries (not supplied)

- 1 Press ▶ and slide the cover.



- 2 Install three LR6 (size AA) batteries (not supplied), then close the cover.



- 3 Turn the POWER switch to ON.

Tip

- If the AC adaptor is used with the system, the power source switches to power from the wall outlet (mains) automatically, even if batteries are installed.

Listening to Music by Wireless Connection with a Bluetooth Device

You can enjoy music with the system wirelessly by using your device's Bluetooth function.

For details on how to operate your device, refer to the operating instructions supplied with the device.

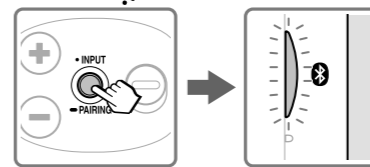
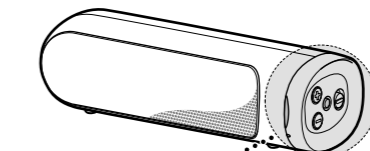
Check the following before operating the system.

- Both the system and the device are placed within 1 m (3 ft) of each other.
- The system is connected to a power source, or batteries are installed into the system.
- The operating instructions supplied with the device are kept at hand.

Pairing with a Bluetooth device and listening to music

Bluetooth devices need to be "paired" with each other beforehand.

- 1 Turn on the system.
- 2 Set the Bluetooth function of the Bluetooth device to on. For details, refer to the operating instructions supplied with the device.
- 3 Press and hold the PAIRING button on the system until the Bluetooth indicator (blue) begins to flash quickly.



The indicator flashes quickly.

- 4 Perform the pairing procedure on the Bluetooth device to detect the system.

If "SRS-BTD70" does not appear on the device's display, repeat from step 2.

Note

- Some devices cannot display a list of detected devices.

- 5 Select "SRS-BTD70" shown in the display of the Bluetooth device.

- 6 If Passcode* input is required on the display of the Bluetooth device, input "0000."

The Bluetooth connection is completed and the Bluetooth indicator (blue) on the system stays on. * Passcode may be called "Passkey," "PIN code," "PIN number," or "Password."

- 7 Start playback on the Bluetooth device, then adjust the volume.

Set the volume of the Bluetooth device to a moderate level, and press the VOLUME +/- buttons on the system.

Tip

- To pair with other Bluetooth devices, repeat steps 2 to 6 for each device.

Notes

- Pairing mode of the system is cancelled after about 5 minutes, and the Bluetooth indicator (blue) turns off. If the pairing mode is cancelled while performing this procedure, start over from step 3.
- Passcode of the system is fixed as "0000." The system cannot be paired with a Bluetooth device whose Passcode is not "0000."
- Once Bluetooth devices are paired, there is no need to pair those devices again. However, in the following cases, you will need to perform the pairing procedure again.
 - Pairing information is deleted after repair, etc.
 - The system is paired with 9 or more devices.
- The system can be paired with up to 8 Bluetooth devices. If a new device is paired after 8 devices have been paired, the device whose latest connection time is the oldest among the 8 paired devices is replaced by the new one.

Listening to music from a paired Bluetooth device

- 1 Turn on the system.
- 2 Make sure the Bluetooth indicator (blue) on the system flashes. If the Bluetooth indicator (blue) is off, press the INPUT button so that the Bluetooth indicator (blue) flashes.
- 3 Set the Bluetooth function of the Bluetooth device to on.
- 4 Select "SRS-BTD70" shown in the display of the Bluetooth device. The Bluetooth connection is completed and the Bluetooth indicator (blue) on the system stays on.

Note

- This step may not be necessary for some devices.

- 5 Start playback on the Bluetooth device, then adjust the volume.

Set the volume of the Bluetooth device to a moderate level, and press the VOLUME +/- buttons on the system.

Tips

- You can adjust the volume of the system via a Bluetooth device supporting AVRCP (Audio/Video Remote Control Profile) VOLUME UP/DOWN. For details, refer to the operating instructions supplied with the device.
- The volume of the system may not be controllable, depending on the device.

Note

- More than one device can be paired with the system, but sound will be heard from just one of those devices.

To finish listening

Do any of the following operations.

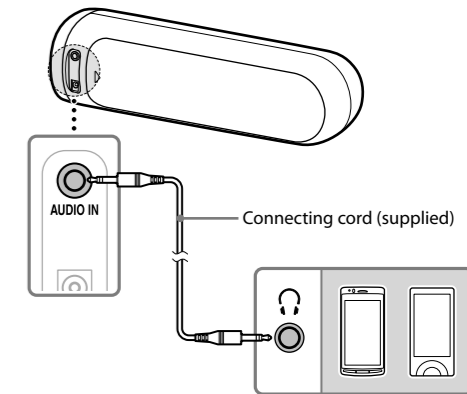
- Set the Bluetooth function of the Bluetooth device to off. For details, refer to the operating instructions supplied with the device.
- Turn off the Bluetooth device.
- Turn off the system.

To delete all pairing information from the system

Hold the VOLUME - button and press the INPUT/PAIRING button for more than 5 seconds while the system is turned on. The POWER indicator (green) lights up, and the Bluetooth indicator (blue) flashes quickly. The system is reset to its default and all pairing information is deleted.

Listening to Music by Wired Connection with a Portable Audio Device, etc.

- 1 Connect the device to the system.



- 2 Turn on the system.

- 3 Make sure the Bluetooth indicator (blue) on the system is off.

If the Bluetooth indicator (blue) is on or flashing, press the INPUT button to turn it off.

- 4 Start playback on the connected device, then adjust the volume.

Set the volume of the connected device to a moderate level, and press the VOLUME +/- buttons on the system.

