

# Quick Start Guide

How to Install the Bundled Software  
How to Use your "WALKMAN"



NWZ-E373/E374/E375

**About the manuals**  
In addition to this Quick Start Guide, this model is accompanied by the User Guide (HTML document) which you can view from the WALKMAN Guide. For details, refer to "How to Install the Bundled Software (User Guide included)."



## Contents

- Please check the items in the package.
- "WALKMAN" (1)
  - Headphones (1)
  - USB cable (1)
  - Quick Start Guide (this manual)
  - Software

The software is stored in the built-in flash memory of your Walkman, and includes the following items:  
– Content Transfer  
For details on how to install it, see "How to Install the Bundled Software (User Guide included)".  
– WALKMAN Guide  
– User Guide, etc.

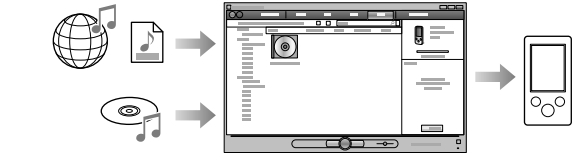
## About Windows Operating System and Windows Media Player

Make sure that the OS is Windows XP (Service Pack 3 or later), Windows Vista (Service Pack 2 or later) or Windows 7\*1 (Service Pack 1 or later), and the installed Windows Media Player version on your computer is 11 or 12. For details about usage or support on Windows Media Player, refer to Windows Media Player information from the following web site:  
<http://support.microsoft.com/>

\*1 [Compatibility mode] for Windows XP is not supported.

## Three Ways to Transfer Music

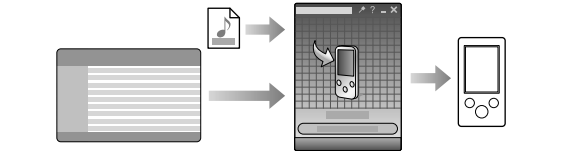
From CDs, etc., using Windows Media Player



### Note

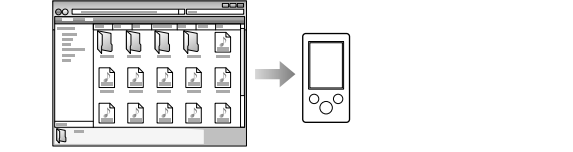
- You cannot transfer contents with copyright protection since your Walkman does not support them.

From iTunes\*1, etc., using Content Transfer



\*1 Content Transfer supports data transfer from iTunes 10 or later to your Walkman.

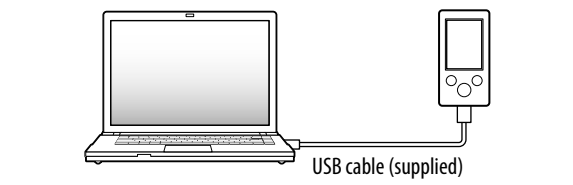
By drag-and-drop using Windows Explorer



For details on transferring music, videos or photos, refer to the User Guide. The User Guide can be readily viewed from the WALKMAN Guide.

## How to Install the Bundled Software (User Guide included)

1 Connect your Walkman to your computer.



2 Select the following order on the computer.  
Select [start] - [Computer] or [My Computer] - [WALKMAN] - [Storage Media].

3 Double-click [Setup.exe].

- The install wizard appears.
- When you execute [Setup.exe], the [Setup.exe] file stored in the [Storage Media] folder of your Walkman is copied to your computer for backup, and the WALKMAN Guide and Content Transfer are installed to your computer.

4 Follow the on-screen instructions.

- After the install wizard is completed, the WALKMAN Guide shortcut appears on the desktop of your computer.
- With your Walkman connected to your computer, when installation of bundled software is completed, Content Transfer starts automatically.

5 Double-click (WALKMAN Guide) on the desktop to start the WALKMAN Guide.

For details on transferring music, etc., refer to the User Guide included in the WALKMAN Guide.

### Hint

- You can start the WALKMAN Guide and Content Transfer from the [start] menu (displayed by clicking [start]).
- You can install the supplied software on another computer through the following procedure even if you delete the [Setup.exe] file by formatting the built-in flash memory of your Walkman. Copy the [Setup.exe] file and the [Install] folder from the [Backup] folder of your computer to the Walkman. Then, connect the Walkman to another computer on which you want to install the software and follow the above procedure from step 2. The [Backup] folder can be found at C:\Program Files\*1\Sony\WALKMAN Guide\NWZ-E370\Backup \*1 [Program Files(x86)] may be displayed depending on the computer OS.

## What can you do with the WALKMAN Guide ?

The WALKMAN Guide includes the following items:

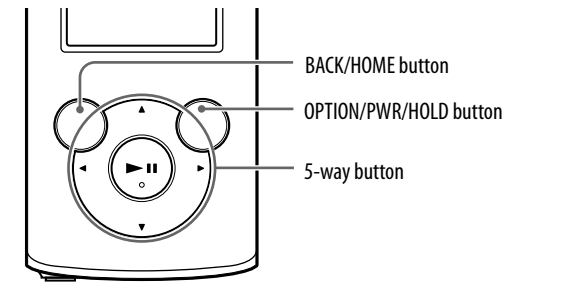
- User Guide  
The following contents can be viewed in your web browser.
  - Details on how to use your Walkman
  - How to use software to transfer content to your Walkman
  - Troubleshooting
- Customer Registration Link
- Customer Support Link
- Other useful Links  
Includes link information, etc., on the download site.

The bundled items differ depending on the country/region of purchase.

### Hint

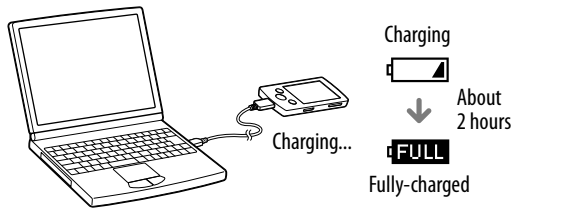
- After executing [Setup.exe] you can use the free space in the [Storage Media] folder more effectively by formatting the built-in flash memory of your Walkman. To format the built-in flash memory of the Walkman, see "To initialize (format) your "WALKMAN"" on the backside.

## How to Use your "WALKMAN"



### Charging the Battery

The battery for your Walkman is recharged while the Walkman is connected to a running computer.



### Note

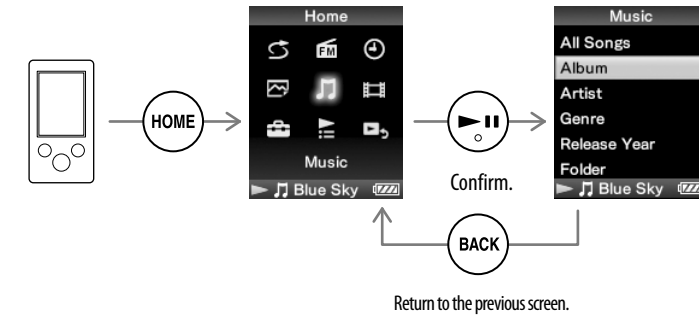
- To prevent battery deterioration, charge the battery at least once every half a year or every year.

## Turning your "WALKMAN" On and Off

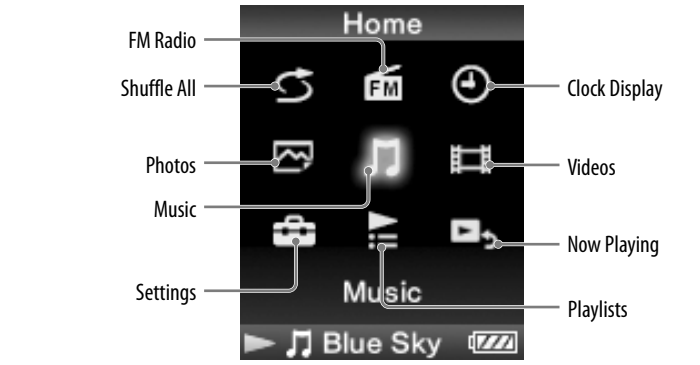
To turn on	Press and hold the OPTION/PWR/HOLD button.
To turn off	During pause, press and hold the OPTION/PWR/HOLD button. POWER OFF appears, your Walkman enters standby mode, and the screen turns off.

## How to use the Home menu

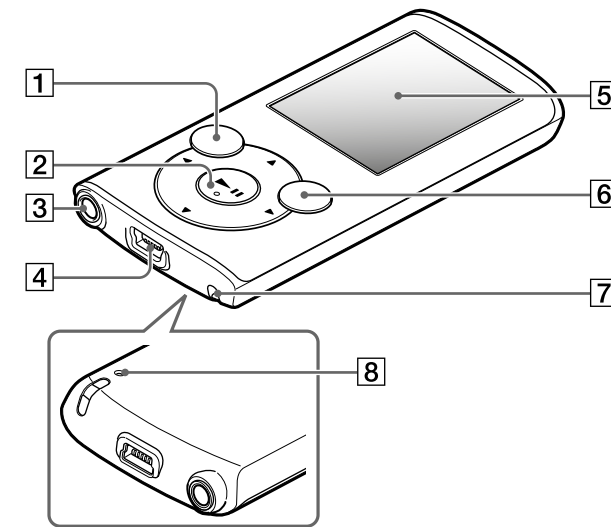
The Home menu appears when you press and hold the BACK/HOME button. The Home menu is the starting point to play audio, search for songs, changing settings, etc.  
From the Home menu, you can select the desired item on the screen by using the 5-way button.



## Home menu



## Parts and Controls



### 1 BACK/HOME button

### 2 5-way button\*1

▶|| (play/pause/confirm) button

▲/▼ buttons

Press ▲/▼ to adjust the volume during playback or FM reception (except when displaying a list screen, such as the song list screen or option menu, etc., or the detailed information screen).

◀▶ buttons

### 3 Headphone jack

### 4 USB connector

Connect the USB cable (supplied).

### 5 Display

### 6 OPTION/PWR/HOLD button

Press to display the option menu.

If you press and hold this button during pause, the screen turns off and your Walkman enters stand by mode.

If you press and hold this button except during pause, all operation buttons are disabled (HOLD function). To cancel this function, press and hold this button again.

### 7 Strap hole

### 8 RESET button

Use a small pin, etc.

\*1 There are tactile dots. Use them to help with button operations.

## Troubleshooting

If your Walkman does not function as expected, try the following steps to resolve the issue.

### 1 Find the symptoms of the issue in “Troubleshooting” in the User Guide (HTML document), and try any corrective actions listed.

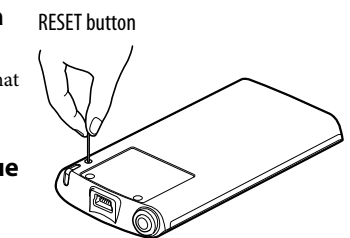
For details on connecting to a computer, see the tables on the right.

### 2 Connect your Walkman to your computer to charge the battery.

You may be able to resolve some issues by charging the battery.

### 3 Press the RESET button with a small pin, etc.

Before resetting your Walkman, check that no song, video, etc. is being played back. You can then reset the Walkman safely.



### 4 Check information on the issue in the Help of each software.

### 5 Look up information on the issue on one of the customer support Web sites.

About the customer support Web sites, see “For the latest information”.

### 6 If the approaches listed above fail to resolve the issue, consult your nearest Sony dealer.

Symptom	Cause/Remedy
Your Walkman cannot charge the battery.	<ul style="list-style-type: none"> <li>The USB cable is not connected to a USB connector on your computer properly.                             <ul style="list-style-type: none"> <li>→ Disconnect the USB cable, and then reconnect it.</li> <li>→ Use the supplied USB cable.</li> </ul> </li> <li>The battery is charged in an ambient temperature out of the range of 5 °C (41 °F) to 35 °C (95 °F).                             <ul style="list-style-type: none"> <li>→ You cannot charge the battery when  icon appears. Charge the battery in an ambient temperature of 5 °C (41 °F) to 35 °C (95 °F).</li> </ul> </li> <li>The computer is not on.                             <ul style="list-style-type: none"> <li>→ Turn on the computer.</li> </ul> </li> <li>Your computer has entered Sleep or Hibernation status.                             <ul style="list-style-type: none"> <li>→ Release the computer from Sleep or Hibernation status.</li> </ul> </li> <li>A USB hub is being used.                             <ul style="list-style-type: none"> <li>→ Connecting your Walkman via a USB hub may not work. Connect the Walkman directly to your computer using the USB cable (supplied).</li> </ul> </li> <li>The operating system installed on the computer is not supported by your Walkman.                             <ul style="list-style-type: none"> <li>→ To charge the Walkman, connect the Walkman to a computer with the operating system that is supported by the Walkman.</li> </ul> </li> <li>You have not used your Walkman for more than a year.                             <ul style="list-style-type: none"> <li>→ Depending on the conditions under which the Walkman is used, the battery may have been deteriorated. Consult your nearest Sony dealer.</li> </ul> </li> </ul>
[USB Connected. The Timer and Alarm will not function.] or [USB Cnctd. (MTP) The Timer and Alarm will not function.] does not appear when connected to the computer with the USB cable (supplied) (The computer does not recognize your Walkman).	<ul style="list-style-type: none"> <li>The remaining battery power is insufficient.                             <ul style="list-style-type: none"> <li>→ Charge the battery by connecting your Walkman to a running computer for at least 5 minutes.</li> </ul> </li> <li>The USB cable is not connected to a USB connector on your computer properly.                             <ul style="list-style-type: none"> <li>→ Disconnect the USB cable, and then reconnect it.</li> <li>→ Use the supplied USB cable.</li> </ul> </li> <li>A USB hub is being used.                             <ul style="list-style-type: none"> <li>→ Connecting your Walkman via a USB hub may not work. Connect the Walkman directly to your computer using the USB cable (supplied).</li> </ul> </li> </ul>
Your Walkman becomes unstable while it is connected to the computer.	<ul style="list-style-type: none"> <li>A USB hub or USB extension cable is being used.                             <ul style="list-style-type: none"> <li>→ Connecting your Walkman via a USB hub or extension cable may not work. Connect the Walkman directly to your computer using the USB cable (supplied).</li> </ul> </li> </ul>
When double-clicking [Setup.exe] to install the bundled software, [Setup.exe] does not execute, and the Properties window opens.	<ul style="list-style-type: none"> <li>Install the bundled software after installing Windows Media Player 11 or 12. For details on Windows Media Player, refer to the following web site: <a href="http://support.microsoft.com/">http://support.microsoft.com/</a></li> </ul>

(Continued)

Symptom	Cause/Remedy
[USB Connected. The Timer and Alarm will not function.] or [USB Cnctd. (MTP) The Timer and Alarm will not function.] does not appear when connected to the computer with the USB cable (supplied) (The computer does not recognize your Walkman).	<ul style="list-style-type: none"> <li>The USB connector on your computer may have a problem.                             <ul style="list-style-type: none"> <li>→ Connect your Walkman to another USB connector on your computer.</li> </ul> </li> <li>When you use your Walkman for the first time, or when the battery is low, it may take the Walkman about 5 minutes to display the message after connected to a computer. This is not a malfunction.</li> <li>The software authentication may be performed and it may take rather a long time. Wait for a while.</li> <li>The software installation has been failed.                             <ul style="list-style-type: none"> <li>→ Reinstall the software by using the installer. The imported data will remain untouched.</li> </ul> </li> <li>The computer is running another software other than the one used for transferring.                             <ul style="list-style-type: none"> <li>→ Disconnect the USB cable, wait a few minutes, and reconnect it. If the problem persists, disconnect the USB cable, restart the computer, and then reconnect the USB cable.</li> </ul> </li> <li>[USB Connected. The Timer and Alarm will not function.] or [USB Cnctd. (MTP) The Timer and Alarm will not function.] may not appear on your Walkman, depending on the software environment that is running on your computer.                             <ul style="list-style-type: none"> <li>→ Activate Windows Media Player, or Windows Explorer.</li> </ul> </li> </ul>
Your Walkman becomes unstable while it is connected to the computer.	<ul style="list-style-type: none"> <li>A USB hub or USB extension cable is being used.                             <ul style="list-style-type: none"> <li>→ Connecting your Walkman via a USB hub or extension cable may not work. Connect the Walkman directly to your computer using the USB cable (supplied).</li> </ul> </li> </ul>
When double-clicking [Setup.exe] to install the bundled software, [Setup.exe] does not execute, and the Properties window opens.	<ul style="list-style-type: none"> <li>Install the bundled software after installing Windows Media Player 11 or 12. For details on Windows Media Player, refer to the following web site: <a href="http://support.microsoft.com/">http://support.microsoft.com/</a></li> </ul>

### To initialize (format) your “WALKMAN”

You can format the built-in flash memory of your Walkman. If the memory is formatted, all files including the User Guide (HTML document) will be erased. Be sure to verify the files stored in memory prior to formatting, and then export any necessary files to the hard disk of your computer or other device beforehand.

### 1 Press and hold the BACK/HOME button until the Home menu appears.

### 2 Select [Settings] – [Common Settings] – [Format] – [Yes] – [Yes] in this order.

Press the ▲/▼/◀▶ button to select the item, and then press the ▶|| button to confirm. When initialization finishes, [Memory formatted.] appears.

#### Note

- Do not format the built-in flash memory using Windows Explorer. If you format the built-in flash memory, format it on your Walkman.

## Precautions

### About the headphones

- Avoid playing the unit at so loud a volume that extended play might affect your hearing.
- At a high volume outside sounds may become inaudible. Avoid listening to the unit in situations where hearing must not be impaired, for example, while driving or cycling.
- As the supplied headphones are of open-air design, sounds go out through the headphones. Remember not to disturb those close to you.

### License and Trademark Notice

Refer to the User Guide (HTML document).

### For users in France

When replacing the headphones/earphones, please refer to the model of the headphones/earphones adapted to your unit that appears below. MDR-E804YLA

At high volume, prolonged listening to the personal audio player can damage the user's hearing.



### Owner's Record

The model and serial numbers are located on the back of the player. Record them in the space provided below. Refer to these numbers in the spaces whenever you call upon your Sony dealer regarding this product.

Model No. \_\_\_\_\_

Serial No. \_\_\_\_\_

### For the latest information

If you have any questions or issues with this product, or would like information on compatible items with this product, visit the following web sites.

For customers in the USA:

<http://www.sony.com/walkmansupport>

For customers in Canada:

<http://esupport.sony.com/ca/>

For customers in Europe:

<http://support.sony-europe.com/DNA>

For customers in Latin America:

<http://www.sony-latin.com/index.crp>

For customers in other countries/regions:

<http://www.sony-asia.com/support>

For customers who purchased the overseas models:

<http://www.sony.co.jp/overseas/support/>