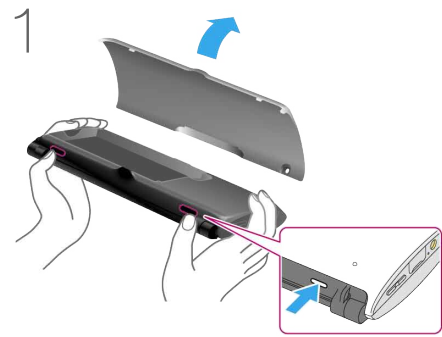


Quick Start Guide

Tablet Device SGPT21 Series

Getting Started

Make sure to turn off your tablet device.



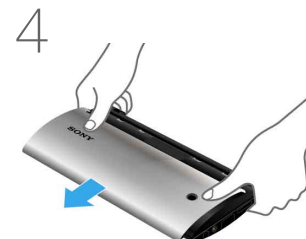
Remove the protection film covering the sides of your tablet device, and then **press the two buttons to open the bottom cover.**



Orient the contacts as shown, and then insert the battery pack.



Close the bottom cover.




Slide off the upper cover.

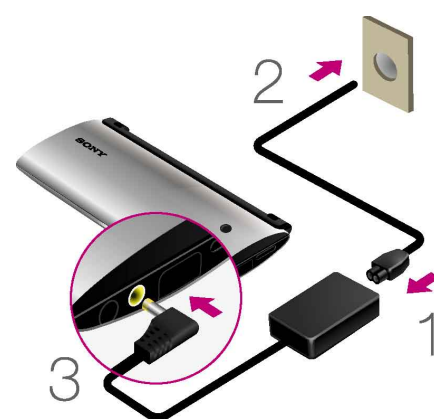


Insert a SIM card (not supplied), and then slide the upper cover back in.



Press and hold the  (power) button for three seconds. When the tablet device turns on, perform the initial settings according to the displayed instructions.





In the box

- AC adapter
- AC power cord (mains lead)
- microSD memory card* (2GB) (trial sample)
- Rechargeable lithium-ion battery pack
- Quick Start Guide (this document)
- Important Information

*microSD memory card is inserted in the tablet device.

Charging the Battery

Connect the AC power cord (mains lead), AC adapter, AC outlet (wall socket) and your tablet device in the order shown by the numbers in above figure.

Accessing the Help guide

- From your tablet device:
Tap [Apps] - [Help guide].
- From a PC browser:
http://support.sony-europe.com/computing/tablet/manuals/helpguide_sgpt2/GB

Support Website

For more information about your tablet device, see <http://support.sony-europe.com/computing/tablet/>