

# *Remote Commander*

---

Operating Instructions

*RM-PP404*

---

## Precautions

### On safety

Should any solid object or liquid fall into the cabinet, unplug the receiver and have it checked by qualified personnel before operating it any further.

### On operation

Before connecting other components, be sure to turn off and unplug the receiver.

### On cleaning

Clean the cabinet, panel and controls with a soft cloth slightly moistened with a mild detergent solution. Do not use any type of abrasive pad, scouring powder or solvent such as alcohol or benzine.

If you have any question or problem concerning your receiver, please consult your nearest Sony dealer.


---

## About This Manual

The instructions in this manual are for model RM-PP404. Check your model number by looking at the lower right corner of the front side.

### Conventions

The following icon is used in this manual:

 Indicates hints and tips for making the task easier.


---

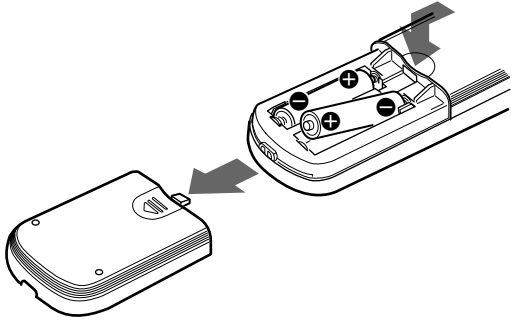
## Before You Use Your Remote

Check that you received the following item with the remote:

R6 (size-AA) batteries (2)

### Inserting batteries into the remote

Insert two R6 (size-AA) batteries with the + and - properly oriented in the battery compartment. When using the remote, point it at the remote sensor  on the receiver.



### When to replace batteries

Under normal conditions, the batteries should last for about 6 months. When the remote no longer operates the receiver, replace both batteries with new ones.

### Notes

- Do not leave the remote in an extremely hot or humid place.
- Do not use a new battery with an old one.
- Do not expose the remote sensor of the receiver to direct sunlight or lighting apparatuses. Doing so may cause a malfunction.
- If you don't use the remote for an extended period of time, remove the batteries to avoid possible damage from battery leakage and corrosion.

---

# TABLE OF CONTENTS

---

## Location of Parts and Basic Remote Operations 4

Parts Description 4

---

## Advanced Remote Operations 11

Operating Other Components 12

---

## Additional Information 16

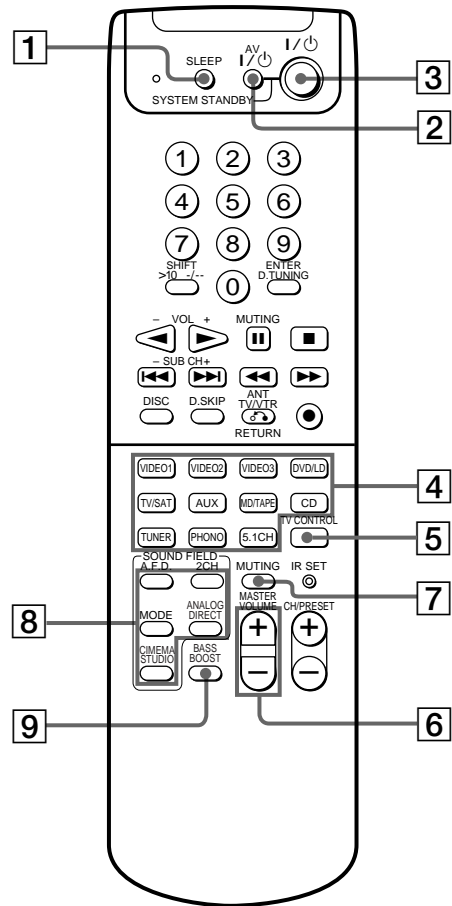
Troubleshooting 16

Specifications 17

# Location of Parts and Basic Remote Operations

This chapter provides information on the location of buttons and how to use them to perform basic operations. However, some functions explained in this section may not work depending on the model of the receiver. For the functions of the receiver you purchased, refer to the Operating Instructions supplied with the receiver.

## Parts Description



**1 SLEEP button**

Press repeatedly to activate the sleep function and the duration which the receiver turns off automatically.

**2 AV I/⏻ switch**

Press to turn the selected audio and video components under the function button, on or off.

If you press the I/⏻ switch (3) at the same time, it will turn off the main component and other Sony audio/video components (SYSTEM STANDBY).

**Note**

The function of the AV I/⏻ switch changes automatically each time you press the function buttons (4). Depending on the component, the above operation may not be possible or may operate differently than described.

**3 I/⏻ switch**

Press to turn the receiver on or off.

**4 Function buttons**

Press one of the buttons to select the component you want to use. When you press a button, the receiver turns on. The components are factory assigned to the buttons as follows. When you want to assign other components, program the remote following the steps on page 12.

Button(s)	Assigned component(s)
VIDEO1	VCR(VTR mode 3)
VIDEO2	VCR(VTR mode 1)
VIDEO3	VCR(VTR mode 2)
DVD/LD	DVD player
TV/SAT	TV tuner
AUX	—
MD/TAPE	MD deck
CD	CD player
TUNER	Built-in tuner*
PHONO	Turntable*
5.1 CH	DVD player
TV CONTROL	TV tuner

\* The setting cannot be changed.

See the table on page 10 for information on the buttons that you can use to control each component.

Note that the function buttons are factory-set as described in the table above. If you want to change the factory setting of the buttons to match your particular components, do the procedure “Changing the Factory Setting of a Function Button” on page 12.

**Note**

After you have selected VCR or DVD player, turn on the TV and set the TV's video input to match the component you selected.

**5 TV CONTROL button**

If you are using a TV, you can use this remote to operate the TV without turning on the receiver. When you are using a Sony TV, pressing this button turns on the TV and switches to TV input.

**6 MASTER VOLUME +/- buttons**

Press to adjust the volume level of all speakers at the same time.

**7 MUTING button**

Press to mute the sound. The MUTING indicator on the receiver lights up when the sound is muted.

**8 SOUND FIELD buttons****A.F.D. button**

Press to set the receiver to automatically select the appropriate sound field for the input signal. This button can be used only with receivers that have digital inputs.

**2CH button**

Press to turn the sound field off and listen to 2 channel stereo sound. Multi channel source is also downmixed to a 2 channel stereo sound.

**MODE button**

Press to select sound fields.

**ANALOG DIRECT button**

Press to listen to an analog source without digital processing by the equalizer, sound field, etc.

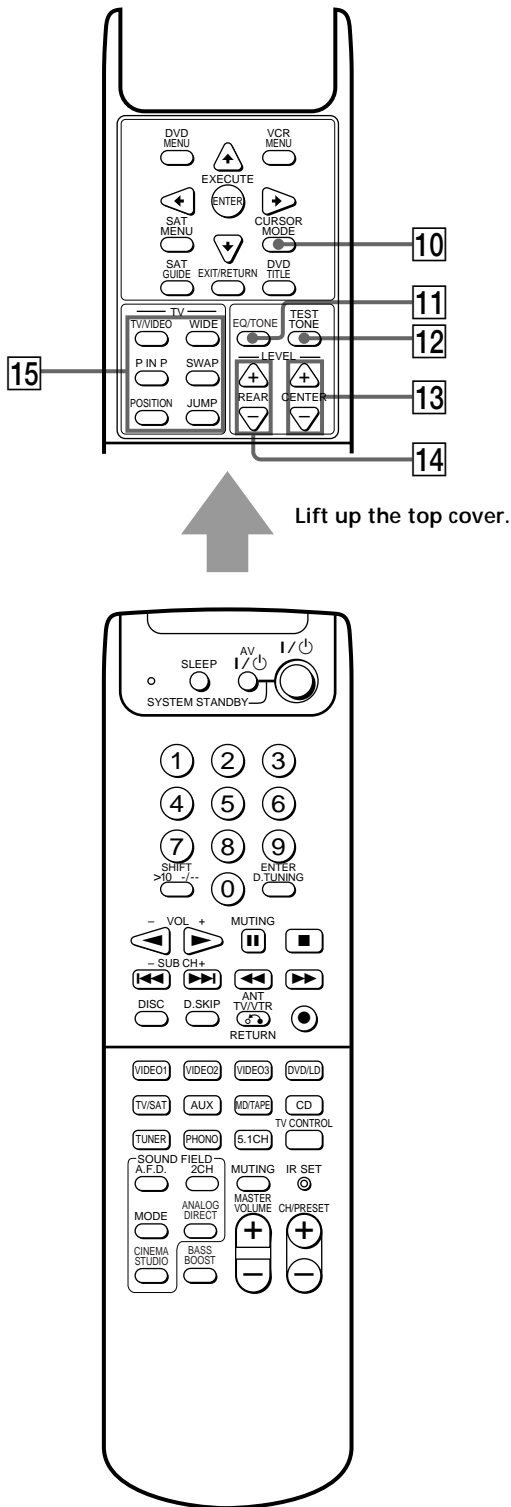
**CINEMA STUDIO button**

Press to select CINEMA STUDIO in the sound field menu.

**9 BASS BOOST button**

Press to increase the bass of the front speakers. The BASS BOOST indicator on the receiver lights up when the function is turned on.

## Parts Description



### 10 CURSOR MODE button

Press repeatedly to select a cursor mode, SURROUND, BASS/TREBLE (EQ), etc. The indicator for the selected cursor mode lights up on the receiver.

### 11 EQ/TONE button

Press to turn the tone effect on or off. The TONE indicator on the receiver lights up while the tone effect is turned on.

Note that if you have adjusted the tone using the CURSOR MODE button and cursor buttons, the adjusted tone will be produced whenever you turn on the tone effect.

### 12 TEST TONE button

Press to output a test tone.

### 13 LEVEL CENTER +/- buttons

Press to adjust the volume level of the center speaker.

### 14 LEVEL REAR +/- buttons

Press to adjust the volume level of the rear speakers.

### 15 TV buttons

#### TV/VIDEO button

Press to change the input mode of the TV.

#### WIDE button

Press to switch the TV to the wide mode.

#### P IN P button

Press to activate the picture-in-picture function\*.

#### SWAP button

Press to swap the small and large pictures\*.

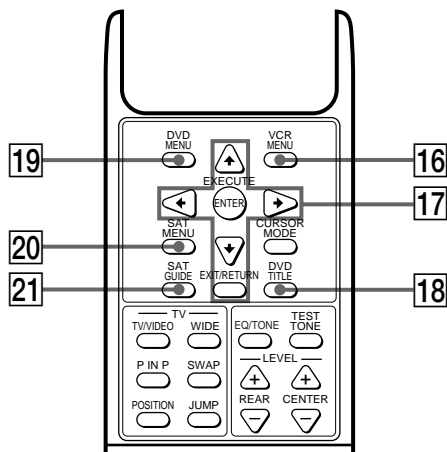
#### POSITION button

Press to change the position of the small picture\*.

#### JUMP button

Press to toggle between the previous and the current channels.

\* Only with Sony TVs with the picture-in-picture function.



Lift up the top cover.

**16 VCR MENU button**

Press to display the VCR menu on the TV screen. Then use the cursor buttons on the remote to perform the menu operations (see “17 Cursor buttons (▲/▼/◀/▶), EXECUTE/ENTER button, and EXIT/RETURN button” on this page).

**Note**

After you press the VCR MENU button, the remote is set to control the VCR that corresponds to the last selected VCR.

**17 Cursor buttons (▲/▼/◀/▶), EXECUTE/ENTER button, and EXIT/RETURN button**

After pressing the CURSOR MODE button or SET UP button on the receiver, use the cursor buttons to make specific settings (see page 6).

After pressing the VCR MENU, DVD MENU, DVD TITLE, SAT MENU, or SAT GUIDE button, use these buttons to perform the following operations:

- Cursor buttons:** To select a menu item
- EXECUTE/ENTER button:** To enter the selection
- EXIT/RETURN button:** To return to the previous menu or exit the menu

Some of these buttons do not operate after a particular button is pressed. See the table below to find out which buttons operate after which button is pressed.

Operable buttons	The button pressed first			
	CURSOR MODE	SAT MENU SAT GUIDE	VCR MENU	DVD MENU DVD TITLE
Cursor buttons	●	●	●	●
EXECUTE/ ENTER	●	●	●	●
EXIT/ RETURN		●		●

**18 DVD TITLE button**

Press to display the DVD title menu. Then use the cursor buttons on the remote to perform the menu operations (see “17 Cursor buttons (▲/▼/◀/▶), EXECUTE/ENTER button, and EXIT/RETURN button” on this page).

**19 DVD MENU button**

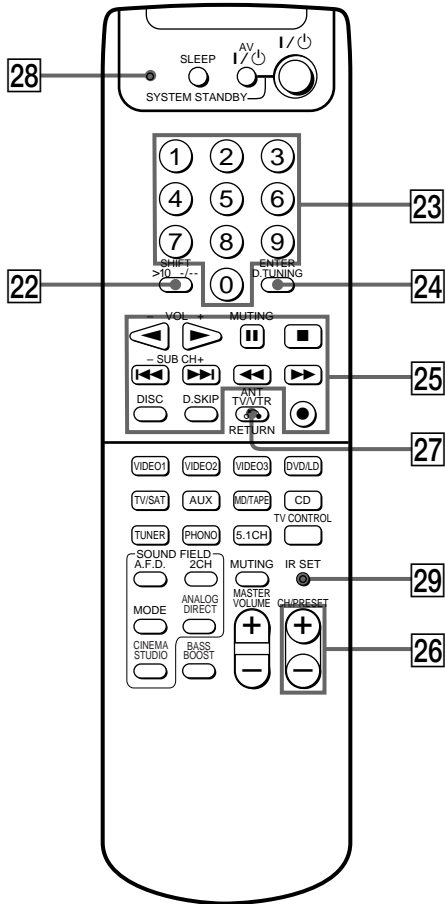
Press to display the DVD menu. Then use the cursor buttons on the remote to perform the menu operations (see “17 Cursor buttons (▲/▼/◀/▶), EXECUTE/ENTER button, and EXIT/RETURN button” on this page).

**20 SAT MENU button**

Press to display the SAT menu. Then use the cursor buttons on the remote to perform the menu operations (see “17 Cursor buttons (▲/▼/◀/▶), EXECUTE/ENTER button, and EXIT/RETURN button” on this page).

**21 SAT GUIDE button**

Press to display the SAT guide. Then use the cursor buttons on the remote to perform the menu operations (see “17 Cursor buttons (▲/▼/◀/▶), EXECUTE/ENTER button, and EXIT/RETURN button” on this page).



**22 SHIFT >10 /- button\***

**If you have selected tuner:**

Press repeatedly to select a memory page for presetting radio stations or tuning to preset stations.

**If you selected VCR, TV, LD player, tape deck, MD deck, or CD player:**

Press before inputting a channel or track number of eleven or higher.

**23 Numeric buttons (1 to 0)\***

Inputs the corresponding numeric value. When inputting a channel, disc, or track number, 0 selects 10.

**24 ENTER D.TUNING button\***

**If you have selected tuner:**

Press to enter direct tuning mode.

**If you have selected VCR, DVD player, LD player, TV, satellite tuner, tape deck, MD deck, or CD player:**

After selecting a channel, disc, or track using the numeric buttons, press to enter the value.

\* The function of these buttons switch automatically each time you press the function buttons (4). The above explanation is intended to serve as an example only. Therefore, depending on the component, the above operation may not be possible or may operate differently than described.



**25 Operation buttons\***

The following table describes the component operated by each button and the function of the buttons. See the table on page 10 for information on the buttons that you can use to control each component.

Button(s)	Function
◀	Starts play on the reverse side of the cassette.
VOL -	Lowers the volume.
▶	Starts play. (Starts play on the front side of the cassette.)
VOL +	Raises the volume.
⏸	Pauses play or recording or starts recording when the component is in recording standby.
MUTING	Mutes the sound.
■	Stops play.
⏮/⏭	Skips tracks.
SUB CH +/-	Changes the sub channel selection higher and lower.
⏪/⏩	Fast forwards or rewinds. Searches tracks in the forward or backward direction.
●	Sets the deck in recording standby.
● + ▶ (if pressed together)	Starts recording. You can press ◀ for the tape deck instead of ▶.
DISC	Selects a disc (with a multi-disc changer only).
D.SKIP	Skips a disc (with a multi-disc changer only).

**26 CH/PRESET +/- buttons\***

Press repeatedly to select a preset station or channel.

**27 ANT TV/VTR/RETURN button\***

Press repeatedly to select the signal to be output from the antenna terminal of the VCR (TV signal or video signal). With a DVD player, press to go back to previous on-screen menus or to resume playback.

**28 Program indicator\***

Lights up whenever any button on the remote is pressed. Also lights up during programming (see page 13).

**29 IR SET button**

Use this button to program the remote with the signals to control non-Sony components (see page 13).

\* The function of these buttons switch automatically each time you press the function buttons (4). The above explanation is intended to serve as an example only. Therefore, depending on the component, the above operation may not be possible or may operate differently than described.

# Parts Description

Location of Parts and Basic Remote Operations

**Table of buttons that you can use to control each component**

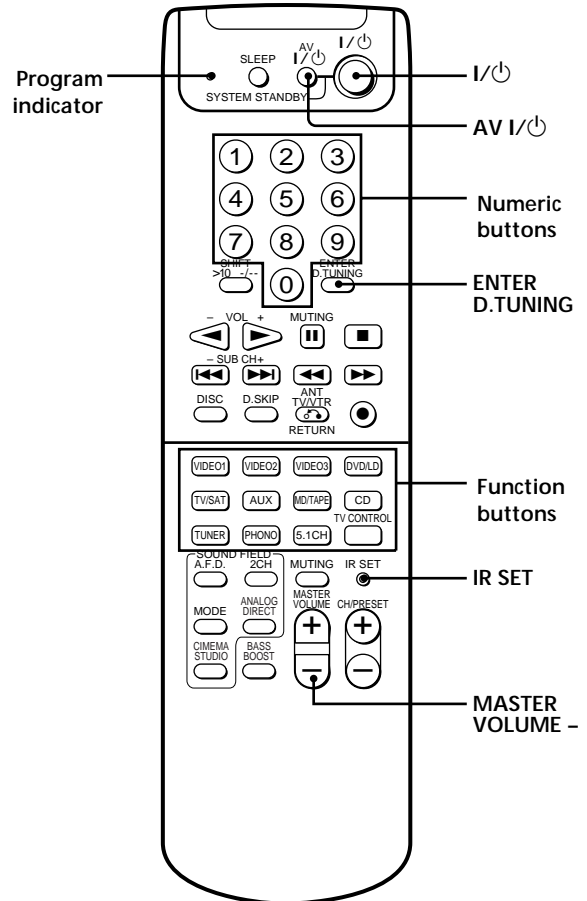
Component \ Button(s)	CD player	DAT deck	MD deck	Tape deck (A and B)	LD player	VCR	TV	Satellite tuner/ Cable box	Video CD player	DVD player
AV I/⏻	●	●	●		●	●	●	●	●	●
Numeric buttons	●	●	●	●	●	●	●	●	●	●
SHIFT >10 -/--	●		●	●	●	●	●		●	
ENTER D.TUNING	●	●	●	●	●	●	●	●		●
▶				●						
VOL -							●			
▶	●	●	●	●	●	●			●	●
VOL +							●			
	●	●	●	●	●	●			●	●
MUTING							●			
■	●	●	●	●	●	●			●	●
⏮/⏭	●	●	●	●**	●	●			●	●
SUB CH +/-							●			
⏪/⏩	●	●	●	●	●	●			●	●
DISC	●*									
D.SKIP	●*									●*
ANT TV/VTR						●				
RETURN					●				●	●
●		●	●	●						
● + ▶		●		●		●				
● + ◀				●						

\* With a multi-disc changer only.

\*\* B deck only

# Advanced Remote Operations

This chapter describes how to change the factory setting of a function button and how to set the remote to control non-Sony components.



## Brief descriptions of buttons used for advanced remote operations

**Program indicator:** Lights up during programming operations.

**I/⏻, AV I/⏻, MASTER VOLUME – :** Press these buttons at the same time to reset all the function buttons to the factory settings and to clear the programmed signals set for operation of non-Sony components.

**Numeric buttons:** Use when changing the factory settings of the function buttons or specifying the maker of the component that you want to control using the remote.

**ENTER D.TUNING:** Use when changing the factory settings of the function buttons or setting the remote to operate non-Sony components.

**Function buttons:** Come with factory settings that can be changed to suit the components you have.

**IR SET:** Press to set the remote to operate non-Sony components.

## Operating Other Components

You can program the remote to control other components by changing the code or non-Sony components. Once the control signals have been memorized, you can use those components as part of your system.

Furthermore, you can also program this remote for Sony components that the remote is unable to control. Note that the remote can control the components that accept infrared wireless control signals only.

### Notes

- The settings of PHONO and TUNER cannot be changed.
- When you assign a component to the TV CONTROL button, you can operate the programmed component without changing the function of the receiver.

### 1 Press IR SET.

The program indicator lights up.

### 2 Press the function button for the component you want to control.

For example, if you are going to control a CD player, press CD.


### 3 Press the numeric buttons to enter the numeric code (or one of the codes if more than one code exist) corresponding to the component and the make of the component you want to control.

See the tables on pages 14 and 15 for information on the numeric code(s) corresponding to the component and the maker of the component (the first digit and the last two digits of the numeric code(s) correspond to the category and the maker's code respectively).

### 4 Press ENTER D.TUNING.

When the program indicator flashes twice, the component(s) can then be controlled using this remote.

### 5 Repeat Steps 1 to 4 to control other components.

 If programming is unsuccessful, check the following:

- If the program indicator does not light up in Step 1, the batteries are weak. Replace both batteries.
- If you do not do Step 2 within twenty seconds after pressing the IR SET button in Step 1, the remote automatically exits programming mode. Start again from Step 1.

#### Notes

- To redo a setting during programming, press IR SET to return to step 2.
- After Step 1, only the first function button that is pressed will register. If you press more than one function button, it will not register.
- In step 3, only the first three numbers entered are valid.
- If you enter an unidentified preset number, the program indicator goes off without flashing after pressing ENTER D.TUNING in step 4, then the remote exits programming mode. The previously programmed settings are memorized.

#### Clearing all programmed signals

To clear all the programmed signals, do the following procedure. The remote is reset to its factory-setting.

First press down MASTER VOLUME  $-$ , then AV I/ $\odot$ , and then I/ $\odot$  until the program indicator flashes three times, then goes off.

### The numeric codes corresponding to the component and the maker of the component

Use the numeric codes in the tables below to control non-Sony components and also Sony components that the remote is normally unable to control. Since the remote signal that a component accepts differs depending on the model and year of the component, more than one numeric code may be assigned to a component. If you fail to program your remote using one of the codes, try using other codes.

#### Notes

- The numeric codes are based on the latest information available for each brand. There is a chance, however, that your component will not respond to some or all of the codes.
- All of the functions on this remote may not be available when used with your particular component.

## Operating Other Components

### To control a CD player

Maker	Code(s)
SONY	101, 102
DENON	103, 104
JVC	105, 106, 107
KENWOOD	108, 109, 110
MAGNAVOX	111, 116
MARANTZ	116
ONKYO	112, 113, 114
PANASONIC	115
PHILIPS	116
PIONEER	117
TECHNICS	115, 118, 119
YAMAHA	120, 121, 122

### To control a DAT deck

Maker	Code(s)
SONY	203
PIONEER	219

### To control an MD deck

Maker	Code(s)
SONY	301
DENON	302
JVC	303
KENWOOD	304

### To control a tape deck

Maker	Code(s)
SONY	201, 202
DENON	204, 205
KENWOOD	206, 207, 208, 209
NAKAMICHI	210
PANASONIC	216
PHILIPS	211, 212
PIONEER	213, 214
TECHNICS	215, 216
YAMAHA	217, 218

### To control an LD player

Maker	Code(s)
SONY	601, 602, 603, 604
PIONEER	606

### To control a video CD player

Maker	Code(s)
SONY	605

**To control a VCR**

Maker	Code(s)
SONY	701, 702, 703, 704, 705, 706
AIWA	710, 750, 757, 758
AKAI	707, 708, 709, 759
BLAUPUNKT	740
EMERSON	711, 712, 713, 714, 715, 716, 750
FISHER	717, 718, 719, 720
GENERAL ELECTRIC	721, 722, 730
GOLDSTAR	723, 753
GRUNDIG	724
HITACHI	722, 725, 729, 741
ITT/NOKIA	717
JVC	726, 727, 728, 736
MAGNAVOX	730, 731, 738
mitsubishi/MGA	732, 733, 734, 735
NEC	736
PANASONIC	729, 730, 737, 738, 739, 740
PHILIPS	729, 730, 731
PIONEER	729
RCA/PROSCAN	722, 729, 730, 731, 741, 747
SAMSUNG	742, 743, 744, 745
SANYO	717, 720, 746
SHARP	748, 749
TELEFUNKEN	751, 752
TOSHIBA	747, 755, 756
ZENITH	754

**To control a DVD player**

Maker	Code(s)
SONY	401
PANASONIC	402, 406
PIONEER	403
TOSHIBA	404
DENON	405

**To control a TV**

Maker	Code(s)
SONY	501
DAEWOO	502, 504, 505, 506, 507, 515
FISHER	508
GOLDSTAR	502, 503, 511, 512, 515, 534
GRUNDIG	517, 534
HITACHI	502, 513, 514, 515
ITT/NOKIA	521, 522
JVC	516
MAGNAVOX	502, 503, 518
mitsubishi/MGA	502, 503, 519
NEC	502, 503, 520
PANASONIC	509, 524
PHILIPS	515, 518
PIONEER	509, 525, 526, 540
RCA/PROSCAN	502, 510, 527, 528, 529
SAMSUNG	502, 503, 515, 531, 532, 533, 534
SANYO	508
SHARP	535
TELEFUNKEN	523, 536, 537, 538
THOMSON	530, 537, 539
TOSHIBA	535, 540, 541
ZENITH	542, 543

**To control a satellite tuner or cable box**

Maker	Code(s)
SONY	801, 802
JERROLD/G.I.	806, 807, 808, 809, 810, 811, 812, 813, 814
PANASONIC	803
RCA	804, 805
S. ATLANTA	815, 816, 817


# Additional Information

---

## Troubleshooting

If you experience any of the following difficulties while using the receiver, use this troubleshooting guide to help you remedy the problem. Should any problem persist, consult your nearest Sony dealer.

### **The remote does not function.**

- ➔ Point the remote at the remote sensor  on the receiver.
- ➔ Remove any obstacles in the path between the remote and the receiver.
- ➔ Replace both batteries in the remote with new ones, if they are weak.
- ➔ Make sure you select the correct function on the remote.



---

# Specifications

## General

Remote control system	Infrared control
Power requirements	3 V DC with two R6 (size-AA) batteries
Dimensions	210 × 56 × 25 mm
Mass (approx.)	130 g excluding batteries

Design and specifications are subject to change without notice.





