

Setup Guide

Wireless Network Audio System NAS-Z200DiR/Z200iR

© 2009 Sony Corporation Printed in China

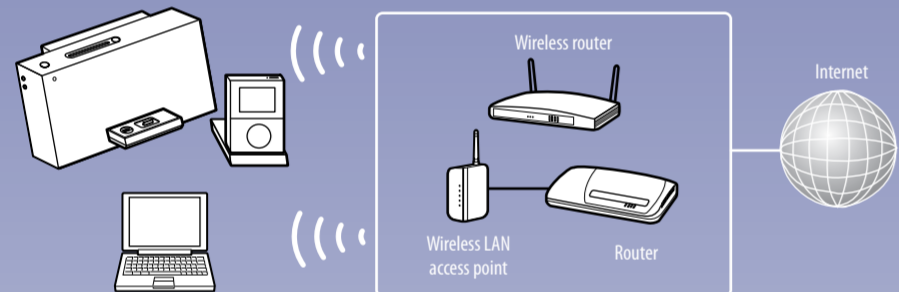
Thank you for purchasing the Sony NAS-Z200DiR/Z200iR Wireless Network Audio System. You can now enjoy listening to the music from various sources, such as a computer, Internet radio, iPod, etc. To listen to the music stored on your computer with this unit, install the supplied VAIO Media plus server software on your computer, and connect the unit and your computer through a wireless network. This Setup Guide explains how to connect the unit to your home network and how to perform basic operations.

Please read the following first:

To listen to the music stored on your computer with this unit, you will need the following environment and information.

- A wireless home network that can access the audio data on your computer.
- Internet access to connect to Internet radio from your home network.
- The network name (SSID)* that identifies your wireless network.
- Confirmation about whether security measures for your wireless home network have been applied or not.
- If your wireless home network is secured by encryption, the network key (security key)* for your network.

* E.g., password for your network, WEP key, WPA key, or WPA2 key. This information could be available from a label on your wireless router/wireless LAN access point or in the operating manual. You may need to refer to the person who set up your wireless network or to information provided by your Internet service provider.

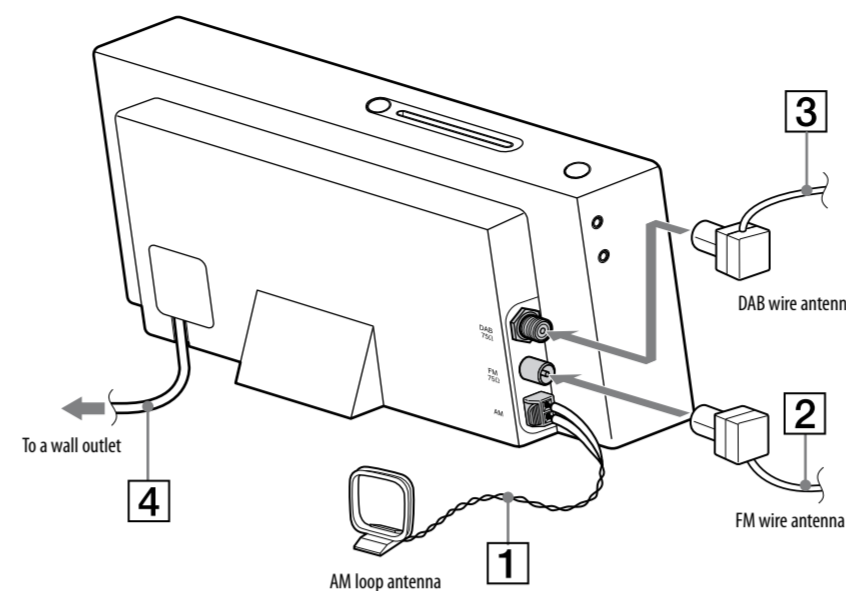


1 Checking the supplied accessories

- Remote control (1)
- Remote control charger (1)
- AC power adaptor (1)
For models except the UK model
- AM loop antenna (1)
For the UK model
- FM wire antenna (1)
- DAB wire antenna (1) (for the UK model only)
- VAIO Media plus CD-ROM (1)
Do not play this disc on an audio CD player.
- Operating Instructions (1)
This manual provides full explanations of the various settings, operations and the network connection procedure. This manual also contains precautions for the safe use of the unit.
- Setup Guide (this manual)
- "Internet Radio service on NAS-Z200DiR/Z200iR" leaflet (1)

2 Connecting the antennas and power cord (main unit)

WARNING
DO NOT plug the power cord into a wall outlet until the following steps 1 to 3 are completed.



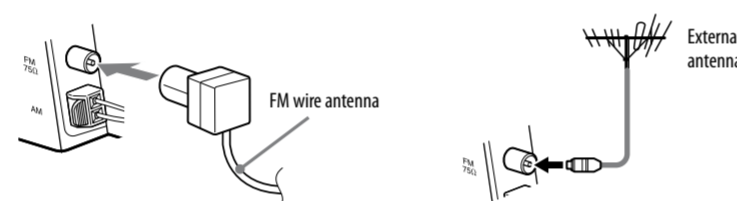
1 Connect the AM loop antenna (aerial).



Locate the antenna away from the unit and other AV equipment. Adjust the location and angle for good AM reception.

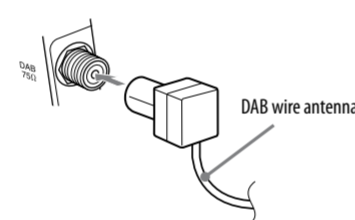
2 Connect the FM wire antenna (aerial).

- On the unit
- When using an external antenna



Adjust the location and angle for good FM reception. If preferred, use a commercially available 75 Ω coaxial cable to connect the unit to an external antenna to improve reception. Ensure the antenna is fully extended.

3 Connect the DAB wire antenna (aerial) (for the UK model only).

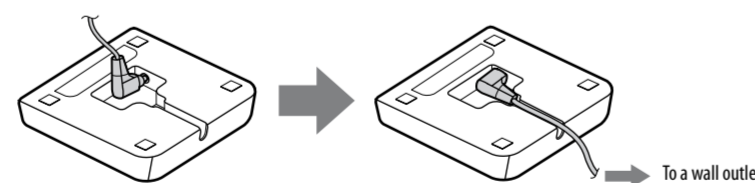


Use an external DAB antenna (aerial) for a more robust DAB signal. It is recommended you only use the supplied DAB wire antenna for areas of strong DAB reception or as a temporary measure until you install an optional external antenna. Use a 75 Ω coaxial cable with male F type connector to connect the unit to an external antenna. Ensure the antenna is fully extended.

4 Connect the power cord to a wall outlet.

3 Connecting the AC power adaptor (remote control)

1 Connect one end of the AC power adaptor to the DC IN jack of the charger and the other end to a wall outlet.



After charging has completed and before using the unit, set the display language and the clock.

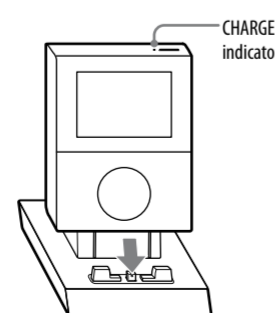
Selecting the display language

- 1 Press I/⏻ (power) to turn on the unit.
- 2 Press HOME to display the Home menu.
- 3 Press ▲/▼/◀/▶ to select [Settings], and then press ENTER.
- 4 Press ▲/▼ to select [Remote Control] – [Language], and then press ENTER.
- 5 Press ▲/▼ to select the desired language, and then press ENTER. The display appears in the selected language.

Setting the clock

- 1 Press HOME to display the Home menu.
- 2 Press ▲/▼/◀/▶ to select [Settings], and then press ENTER.
- 3 Press ▲/▼ to select [Common Setting] – [Clock Setting], and then press ENTER. "0:00" appears in the display.
- 4 Press ▲/▼ to select [Change], and then press ENTER.
- 5 Press ▲/▼ to set the hour, and then press ENTER. A 24-hour clock is used for the time display.
- 6 Press ▲/▼ to set the minute, and then press ENTER.
- 7 Press ▲/▼ to select [OK], and then press ENTER.

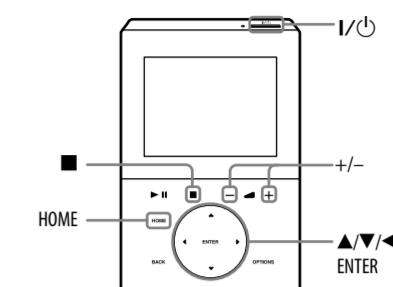
2 Place the remote control on the charger.



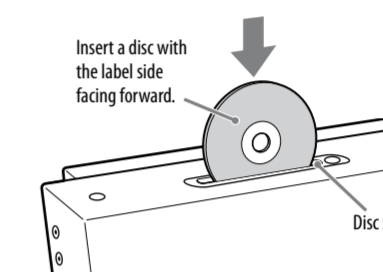
When you place the remote control on the charger, the CHARGE indicator lights up and charging starts. The CHARGE indicator turns off when the remote control is fully charged.

4 Playing a CD

The unit can play audio CDs and CD-R/RW discs recorded with MP3 audio tracks. For further details of the CD function, refer to the operating instructions.



- 1 Press I/⏻ (power) to turn on the unit.
- 2 Press HOME to display the Home menu.
- 3 Press ▲/▼/◀/▶ to select [CD] and press ENTER to enter the CD function.
- 4 Insert a disc in the disc slot.



When you insert a disc, playback starts automatically.

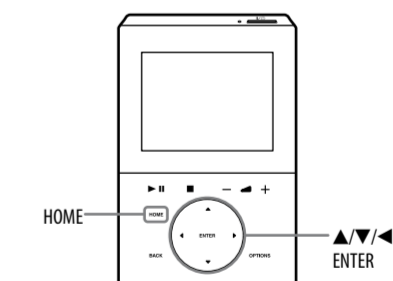
5 Press +/- to adjust the volume.

To stop playing
Press ■.

To change tracks
Press ◀/▶.

To eject a disc
Press ▲ on the main unit.

5 Listening to an FM/AM/DAB* radio station



- 1 Press HOME to display the Home menu.
- 2 Press ▲/▼/◀/▶ to select [Tuner], and then press ENTER.
- 3 Press ▲/▼ to select [FM], [AM], or [DAB]*, and then press ENTER.

If you select [DAB], DAB Automatic Scan starts. When scanning is completed, a list of available DAB stations is created.

- 4 Press ◀/▶ to select a station. Scanning stops automatically when a station is turned in, and then "Tuned" and "Stereo" (for stereo reception only) appear in the display.

* For the UK model only

6 Installing the VAIO Media plus software on your computer

For details on the system requirements of the computer to use the supplied VAIO Media plus software, refer to "System requirements" in the operating instructions.

- 1 Turn on your computer and login with administrator rights.
- 2 Insert the supplied VAIO Media plus CD-ROM into the CD-ROM drive of your computer.
The installation launcher starts automatically, then a Software Setup window appears on the screen.
If installation launcher does not start automatically, double-click "SetupLauncher.exe" on the disc.
- 3 Install the VAIO Media plus software following the instructions given in the message on the screen.
- 4 When the installation has completed, start up the VAIO Media plus software.

Go to the [Start] menu, and select [All programs] - [VAIO Media plus] - [VAIO Media plus].
The introduction window appears the first time you start the VAIO Media plus software.

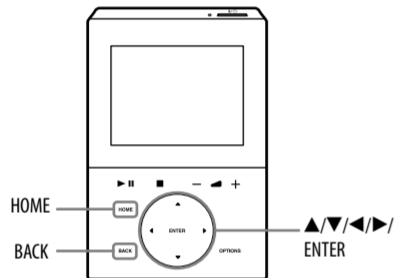
- 5 When the introduction window appears, follow the instructions that appear on the screen to make the initial settings.

The Windows Firewall, Share name and Share status settings are automatically configured.

Note on firewall software

If the firewall function in commercially available software is enabled on your computer, VAIO Media plus may not work correctly even after the initial setup is completed. In case this happens, refer to the "Help" of the VAIO Media plus software, the "Troubleshooting" section in the operating instructions, or the operating manual of your anti-virus software.

7 Connecting the unit to your home network (network setting)



After you have installed VAIO Media plus on your computer, carry out the network settings for connecting the unit to your home network.

- 1 Press HOME to display the Home menu.
- 2 Press ▲/▼/◀/▶ to select [Settings], and then press ENTER.
Settings menu appears.
- 3 Press ▲/▼ to select [Network Setting], and then press ENTER.
"Switch to Home Network, when the setting is completed." appears in the display. Press ▲/▼ to select [OK], and then press ENTER.
- 4 Press ▲/▼ to select [Connection Setting] - [Manual], and then press ENTER.
- 5 When "Change the wireless LAN setting values?" appears, press ▲/▼ to select [Yes], and then press ENTER.
The unit automatically starts searching for a connectable wireless network (SSID).
- 6 Press ▲/▼ to select the network name (SSID) from the list, and then press ENTER.

The display changes to the Network key (security key) input display. The Network key (security key) input display appears only when your home network is secured by encryption. If it does not appear, skip step [7] and go to step [8].

- 7 Enter the network key (security key), and then press and hold ENTER.

Use the following buttons to enter the network key (security key).

Buttons	Descriptions
◀/▶	Selects the desired character type. Each time you press ▶/▶, the character type changes in the following order sequentially. Numbers (0 to 9) → Uppercase alphabet (A to Z) → Lowercase alphabet (a to z) → Symbols (!, @, #, \$, ...) → Numbers (0 to 9) ...
▲/▼	Selects the character. Press and hold down ▲/▼ until the desired character appears.
ENTER	Enters the character and moves the insertion point over one space (a "0" appears by default). Pressing and holding this button enters the text string and completes the text entering.
BACK	Cancels the input of a character.

- 8 Press ▲/▼ to select [Full automatic] from the Address Setting display, and then press ENTER.



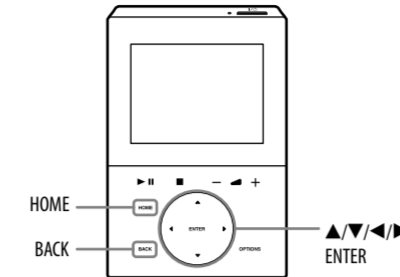
- 9 When "Switch network settings to manual." appears, press ▲/▼ to select [OK], and then press ENTER.



When the unit connects to your home network, the unit changes to the Home Network function and the server selection display appears.

For details on other setting (custom setting, proxy setting, etc.), or on connecting the unit through an AOSS connection or Instant (S-IWS) connection, refer to "Connecting the unit to your home network (network setting)" in the operating instructions.

8 Playing audio data stored on your computer (Home Network function)



After you have connected the unit to your home network, connect the unit to your computer. You can listen to the audio data stored on your computer with the unit's speakers.

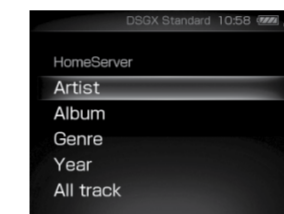
- 1 Press HOME to display the Home menu.
- 2 Press ▲/▼/◀/▶ to select [Home Network] from the Home menu, and then press ENTER.

The server selection display appears.

- 3 Press ▲/▼ to select the name of the server you want to connect to, and then press ENTER.
If the name of the server does not appear, press ▼ to select [Update info] and press ENTER.

- 4 Press ▲/▼ to select the item you want to play.

The items that are displayed (tracks, artists, albums, genres, folder name, etc.) depends on the connected server.



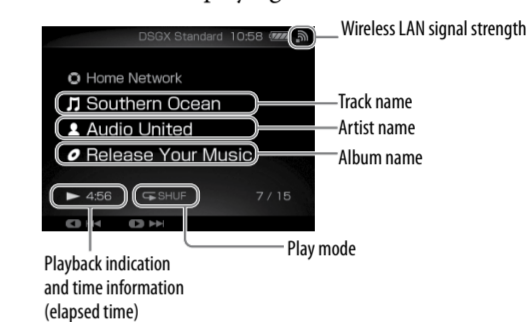
- 5 Press ENTER.

Press BACK to go back to the higher directory.

- 6 Repeat steps [4] and [5] until the track list appears.

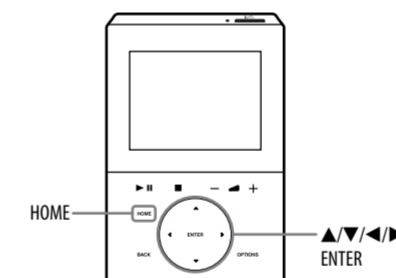
- 7 Press ▲/▼ to select the track you want to play, and then press ENTER.

The unit starts playing the selected track and the playback display appears.



If the unit cannot connect with your computer, try doing step 9 to confirm that the Internet radio reception is possible. If there is no problem with the Internet radio reception, refer to "VAIO Media plus" in the "Troubleshooting" section of the operating instructions.

9 Listening to the Internet Radio



To use the unit to listen to Internet radio, your wireless network needs to be connected to the Internet via your broadband router.
For details on the settings of your wireless router/wireless LAN access point, refer to the operating manual supplied with the device.

After you connect your wireless network to the Internet, you can listen to Internet radio broadcasts offered on the Web by Live365 and SHOUTcast on the unit. For details on Live365, refer to the supplied leaflet "Internet Radio service on NAS-Z200DiR/Z200iR". If you have trouble receiving the Internet radio, refer to "Internet Radio" in the "Troubleshooting" section of the operating instructions.

- 1 Press HOME to display the Home menu.
- 2 Press ▲/▼/◀/▶ to select [Internet Radio], and then press ENTER.
- 3 Press ▲/▼ to select [Live365] or [SHOUTcast], and then press ENTER.

- 4 If you select [Live365] in step 3, press ▲/▼ to select the desired station, and then press ENTER.
If you select [SHOUTcast] in step 3, press ▲/▼ and ENTER to narrow down the choices to the desired genre. Afterwards, select the desired station, and then press ENTER.

The unit starts receiving the selected radio station.



For further details regarding network settings and other functions, refer to the resources listed on the right.

- See the operating instructions for full explanations of the various settings, operations and functions.
- See the troubleshooting section in the operating instructions for solutions to common problems and details of error messages.
- Go to the customer support site of Sony Europe, <http://support.sony-europe.com/> (for customers in Europe only).