

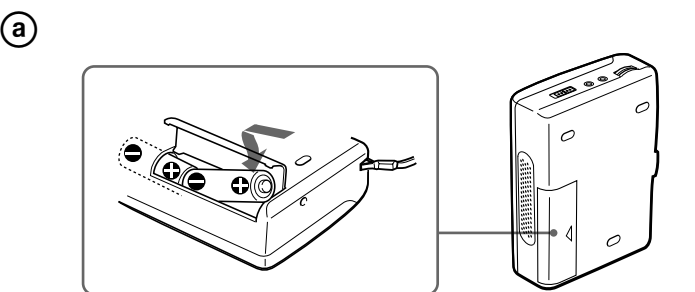
Cassette-Corder

Operating Instructions

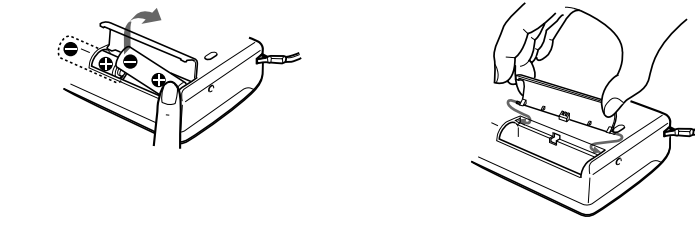
TCM-40DV

Sony Corporation © 1999 Printed in China

A



B



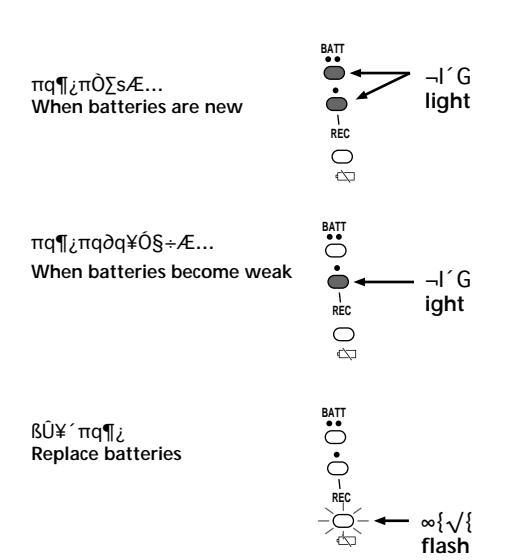
C



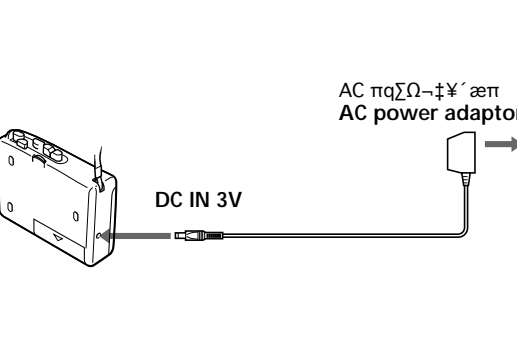
D



D



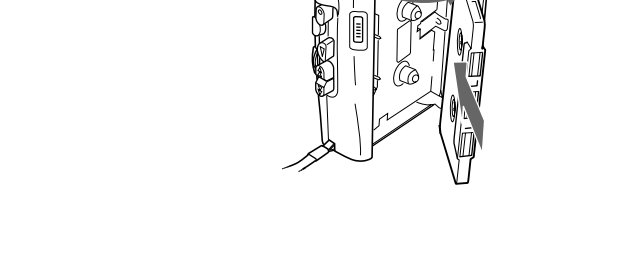
E



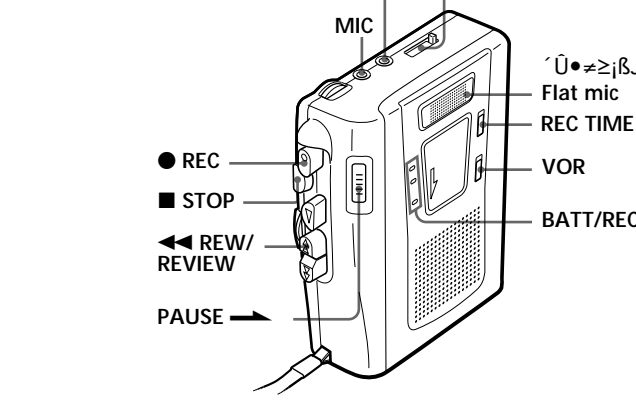
B

A

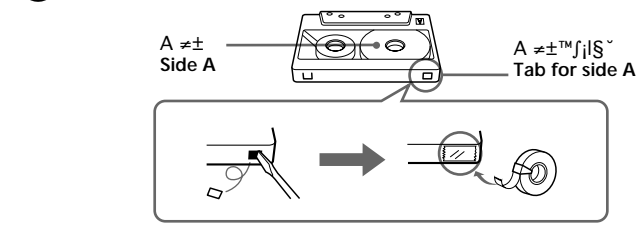
a



b



C



When batteries are new
When batteries become weak
Replace batteries

AC power adaptor
DC IN 3V

1. Press the BATT/REC lamp.
2. Press the STOP lamp.

When the BATT/REC lamp flashes, the batteries are weak. Press the BATT/REC lamp to stop recording.

When the STOP lamp flashes, the tape counter is not working. Press the STOP lamp to reset the counter.

When the REC TIME lamp flashes, the recording time is low. Press the REC TIME lamp to stop recording.

When the VOR lamp flashes, the VOR system is not working. Press the VOR lamp to stop recording.

When the BATT/REC lamp flashes, the batteries are weak. Press the BATT/REC lamp to stop recording.

Sony μP LR6 (SG)	Sony R6P (SR)
11	3
11	3

EIAJ (Electronic Industries Association of Japan) Sony HF

DC IN 3V AC power adaptor

1. Press the BATT/REC lamp.
2. Press the STOP lamp.

When the BATT/REC lamp flashes, the batteries are weak. Press the BATT/REC lamp to stop recording.

When the STOP lamp flashes, the tape counter is not working. Press the STOP lamp to reset the counter.

When the REC TIME lamp flashes, the recording time is low. Press the REC TIME lamp to stop recording.

When the VOR lamp flashes, the VOR system is not working. Press the VOR lamp to stop recording.

When the BATT/REC lamp flashes, the batteries are weak. Press the BATT/REC lamp to stop recording.

4. Press the BATT/REC lamp.

5. Press the STOP lamp.

6. Press the REC TIME lamp.

7. Press the VOR lamp.

8. Press the BATT/REC lamp.

9. Press the STOP lamp.

10. Press the REC TIME lamp.

11. Press the VOR lamp.

12. Press the BATT/REC lamp.

13. Press the STOP lamp.

Welcome!
Thank you for purchasing the Sony Cassette-Corder. This Cassette-Corder is equipped with a REC TIME switch that lets you record double the normal length on any cassette.

Note
Tapes recorded with the REC TIME switch in the DOUBLE position cannot be played properly by a tape recorder without the REC TIME switch function.

Getting Started
Preparing a Power Source
Choose one of the following power sources.

Dry Batteries (see Fig. A-④)
Make sure that nothing is connected to the DC IN 3V jack.

1. Open the battery compartment lid.
2. Insert two size R6 (AA) batteries with correct polarity and close the lid.

Notes
• Do not charge a dry battery.
• Do not use a new battery with an old one.
• Do not use different types of batteries.
• When you do not use the unit for a long time, remove the batteries to avoid any damage caused by battery leakage and subsequent corrosion.
• Dry batteries will not be expended when another power source is connected.

To take out the batteries (see Fig. A-④)
To attach the battery compartment lid if it is accidentally detached (see Fig. A-④)

When to replace the batteries (see Fig. A-④)
Replace the batteries with new ones when the BATT/REC lamps go off and the lamp flashes. The BATT/REC lamps change as illustrated.

Notes
• During FF (CUE) or REW (REVIEW), the lamp may flash. Only when the tape does not run properly, replace the batteries.
• After the batteries have been used for a while, the BATT/REC lamps may flicker during playback if the volume is turned up. This is, however, not an indication for the batteries to be replaced.
• The unit will play back normally for a while even after the lamp flashes. You should, nonetheless, replace the batteries as soon as possible. Otherwise, the built-in speaker may emit a loud noise and recordings may not be made correctly.
• The lamp may flash momentarily at beginning of playback or the end of the tape. If the flashing stops right away, you do not need to replace the batteries.

8. Press the BATT/REC lamp.

Battery life (Approx. hours) (EIAJ*)

	Sony alkaline LR6 (SG)	Sony R6P (SR)
Playback	11	3
Recording	11	3

* Measured value by the standard of EIAJ (Electronic Industries Association of Japan). (Using a Sony HF series cassette tape)

Note
The battery life may shorten depending on the operation of the unit.

For maximum performance we recommend that you use alkaline batteries.

House Current (see Fig. A-④)
Connect the AC power adaptor to DC IN 3V and to a wall outlet. Use the AC-E30HG AC power adaptor (not supplied). Do not use any other AC power adaptor.

Notes
Specifications for AC-E30HG vary for each area. Check your local voltage and the shape of the plug before purchasing.

Operating the Unit
Recording (see Fig. B-④, ⑤)
You can record right away with the built-in microphone. Make sure that nothing is connected to the MIC jack. Place the unit on a hard surface such as a desk with the cassette holder side up so that the flat mic can record effectively.

1. Press the counter reset button to reset the tape counter.
2. Insert a normal (TYPE I) tape with the side to be recorded facing the cassette holder.
3. Set REC TIME to the desired mode. NORMAL (4.8cm/s): for optimum sound. Recommended for normal recordings. DOUBLE (2.4cm/s): for double recording time (for example, 120 minutes using both sides of a 60-minute cassette). Suitable for recording conferences, dictations, etc. Not recommended to record music.

4. Set VOR to: H or L to start and pause recording automatically to the sound. H (high) to record at meetings or in a quiet and/or spacious place. L (low) to record for dictation or in a noisy place. Set VOR to OFF to start and stop recording manually.

Note
When the sound to be recorded is not loud enough, set the VOR switch to OFF, or the unit may not start recording.

Note
When the sound to be recorded is not loud enough, set the VOR switch to OFF, or the unit may not start recording.

5. Press the REC. PLAY is pressed simultaneously and recording starts. While the tape runs, the BATT/REC lamp lights and flickers depending on the strength of the sound.

At the end of the tape, recording stops and the unit turns off automatically.

To Stop recording	Press or slide ■ STOP
Pause recording	PAUSE → in the direction of the arrow To release pause recording, release PAUSE ←.
Review the portion just recorded	Press and hold ← REW/REVIEW during recording. Release the button at the point to start
Take out a cassette	Press ■ STOP and open the cassette compartment lid by hand.

* PAUSE → will also be automatically released when ■ STOP is pressed (stop-pause-release function).

To monitor the sound
Connect an earphone (not supplied) firmly to the EAR jack.

Notes
• Do not use a Hi-position (TYPE II) or metal (TYPE IV) tape. If you do, the sound may be distorted when you play back the tape, or the previous recording may not be erased completely.
• The SPEED CONTROL switch works in the playback mode only. Recording will be made independent of this control.

Notes on VOR (Voice Operated Recording)
• When you use the VOR system in a noisy place, the unit will stay in the recording mode. If the sound is too soft, on the contrary, the unit will not start recording. Set VOR to H (high) or L (low) depending on the conditions to pick up necessary sound only.
• The VOR system depends on the environmental conditions. If you cannot get the desired results even after adjusting VOR to H or L, set VOR to OFF.

To prevent a tape from being accidentally recorded over (see Fig. B-④)
Break off and remove the cassette tabs. To reuse the tape for recording, cover the tab hole with adhesive tape.

(turn over)

