

# Cassette Player

Operating instructions

## WALKMAN

WM-EX562

WALKMAN is a registered trademark of Sony Corporation.

Sony Corporation © 1998 Printed in Malaysia



### For the customers in the USA

#### Owner's Record

The model number is located at the front and the serial number is located inside the tape holder. Record these numbers in the space provided below. Refer to them whenever you call upon your Sony dealer regarding this product.

Model No. WM-EX562

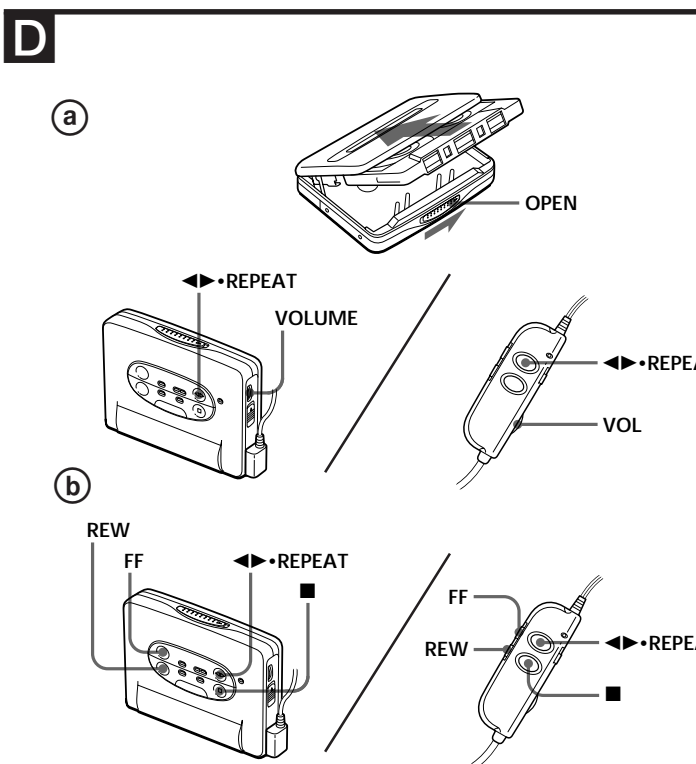
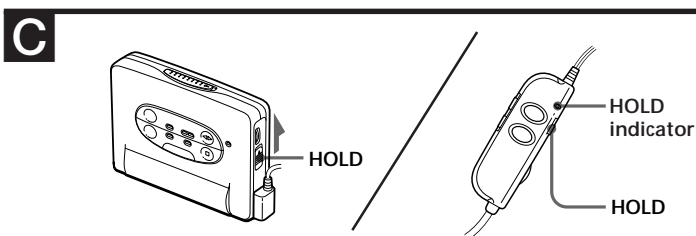
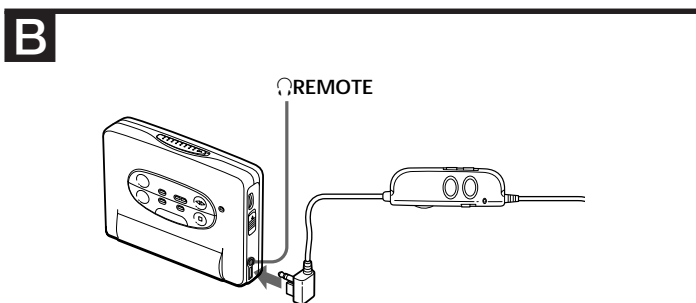
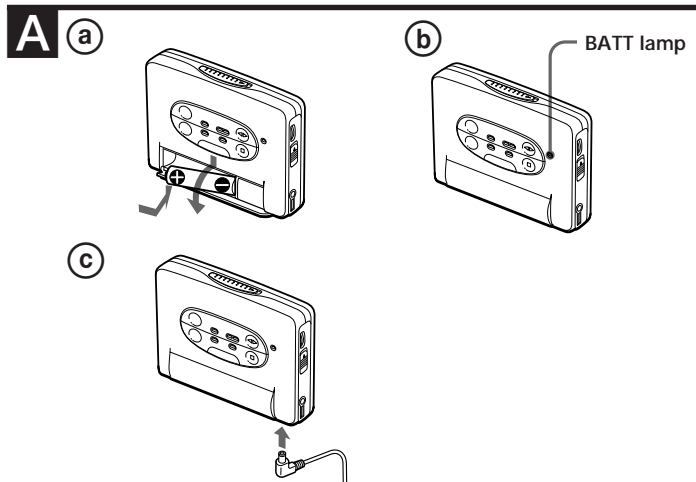
Serial No. \_\_\_\_\_

#### INFORMATION

This equipment has been tested and found to comply with the limits for a Class B digital device, pursuant to Part 15 of the FCC Rules. These limits are designed to provide reasonable protection against harmful interference in a residential installation. This equipment generates, uses, and can radiate radio frequency energy and, if not installed and used in accordance with the instructions, may cause harmful interference to radio communications. However, there is no guarantee that interference will not occur in a particular installation. If this equipment does cause

harmful interference to radio or television reception, which can be determined by turning the equipment off and on, the user is encouraged to try to correct the interference by one or more of the following measures:

- Reorient or relocate the receiving antenna.
  - Increase the separation between the equipment and receiver.
  - Connect the equipment into an outlet on a circuit different from that to which the receiver is connected.
  - Consult the dealer or an experienced radio/TV technician for help.
- This device complies with Part 15 of the FCC Rules. Operation is subject to the following two conditions: (1) This device may not cause harmful interference, and (2) this device must accept any interference received, including interference that may cause undesired operation.
- You are cautioned that any changes or modifications not expressly approved in this manual could void your authority to operate this equipment.



### English

## Welcome!

Thank you for purchasing the Sony WM-EX562 Cassette Player.

- Some features are:
- You can enjoy low bass sounds by the powerful headphone.
  - You can choose from 2 different emphasizing tones: MB (MEGA BASS) and GRV (GROOVE) to adjust to your favorite sound.
  - AMS (Automatic Music Sensor) function that searches the beginning of the current and 2 previous tracks, and succeeding 3 tracks at high speed.
  - Repeat Single Track function that enables play of your favorite single track repeatedly for your convenience.
  - AVLS (Automatic Volume Limiter System) function that moderates the maximum volume level.
  - Useful remote control.

## ▶ Getting Started

### Preparing a Power Source

Choose the dry battery or house current as the power source.

#### Dry Battery (see Fig. A-①)

- 1 Slide and open the battery compartment lid, and insert an R6 (size AA) dry battery (not supplied) by matching the + and - on the battery to the diagram inside the battery compartment.

#### When to replace the battery (see Fig. A-②)

Replace the battery with a new one when the BATT lamp dims.

Battery life (Approx. hours)	(EIAJ*)	
	Sony alkaline LR6 (SG)	Sony R6P (SR)
Tape playback	29	8

\* Measured value by the standard of EIAJ (Electronic Industries Association of Japan). (Using a Sony HF series cassette tape)

#### Note

- The battery life may shorten depending on the operation of the unit.

For maximum performance we recommend that you use an alkaline battery.

#### Notes

- Do not charge a dry battery.
- When the battery is replaced the setted functions will be cancelled, the unit will return to the factory settings.
- When you do not use the Walkman for a long time, remove the battery to avoid any damage caused by battery leakage and subsequent corrosion.

### House Current (see Fig. A-③)

Connect the AC power adaptor AC-E15HG (not supplied) to the DC IN 1.5V jack and to the wall outlet. Do not use any other AC power adaptor.



Specifications for AC-E15HG differ depending on the area of purchase. Check your local voltage and the polarity of the plug before purchasing.

### Connecting the Headphones/ Earphones (see Fig. B)

- 1 Connect the headphones/earphones to REMOTE.
- 2 Wear the "L" marked side to the left ear and the "R" marked side to the right ear.

### Releasing HOLD (see Fig. C)

The HOLD function locks the Walkman and the remote control separately to prevent them from operating when you accidentally press a button. Unlock it before operating.

- 1 Slide HOLD in the opposite direction of the arrow on the Walkman, or slide HOLD on the remote control.

#### To lock the Walkman

Slide HOLD in the direction of the arrow on the Walkman, or slide HOLD on the remote control so that the HOLD indicator turns yellow.

## ▶ Operating the Walkman

### Playing a Tape (see Fig. D-①)

The Auto tape selector automatically selects the tape (normal (TYPE I), CrO<sub>2</sub> (TYPE II) or metal (TYPE IV)) for playback.

- 1 Insert a cassette.
- 2 Press ◀▶•REPEAT to start playing and then adjust the volume.

#### When adjusting the volume on the Walkman

Set the VOL control on the remote control at maximum.

#### When adjusting the volume on the remote control

Set the VOLUME control on the Walkman to around 6.

To	Press (see Fig. D-②)
Play the other side	◀▶•REPEAT during playback
Stop playback	■
Fast forward	FF during stop
Rewind	REW during stop
Repeat the track you are listening to (Repeat Single Track function)	◀▶•REPEAT for two seconds or more during playback To stop a single repeat, press it again.
Find the beginning of the next track/succeeding 3 tracks (AMS*)	FF once/repeatedly during playback
Find the beginning of the current track/previous 2 tracks (AMS)	REW once/repeatedly during playback
Play the same side from the beginning (Auto Rewind Play function)	REW for two seconds or more during stop
Play the other side from the beginning (Skip Reverse function)	FF for two seconds or more during stop

\* Automatic Music Sensor

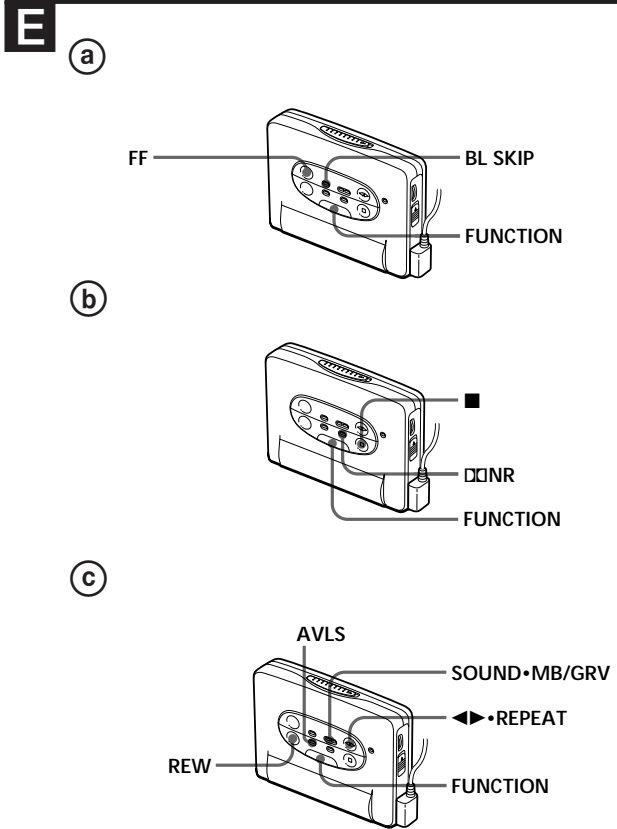
#### Note on Beeps during AMS operations

- When finding the beginning of the next 3 tracks during AMS operations, beeps "• - - -" (beep followed by three long beeps) are emitted repeatedly. Likewise, when finding the beginning of the previous 2 tracks, beeps "•• - - -" are emitted repeatedly. While the remaining tracks are reduced, the number of long beeps are reduced accordingly.

#### Note on AMS, REPEAT Single Track

- To operate the AMS and the REPEAT Single Track functions, you need a blank of 4 seconds or longer between the tracks. Therefore, if there is noise between the tracks, these functions will not detect the blank and will not operate. Likewise, if the recording level is moderately low within a track, these functions may inaccurately operate.

(turn over)



## Using Other Functions

The following operations are used by a combination of the FUNCTION button with other operating buttons. The combination of the FUNCTION button can only be used on the main unit.

### To skip a long blank space between musics (BL SKIP function) (see Fig. E-a)

- 1 While holding down FUNCTION, press the FF button. The BL SKIP indicator will be lit. To cancel the BL SKIP mode, hold down FUNCTION and then press FF. Then the BL SKIP indicator goes off.

#### Note on BL SKIP

- For the BL SKIP function, you need a blank of 12 seconds or longer between the tracks. Therefore, if there is noise between the tracks, these functions will not detect the blank and will not operate. Likewise, if the recording level is moderately low within a track, this function may inaccurately operate.

### To play a tape recorded with Dolby\* NR system (see Fig. E-b)

- 1 While holding down FUNCTION, press ■. ■ NR indicator will be lit. To cancel the Dolby function, hold down FUNCTION and then press ■. Then the ■ NR indicator goes off.

\* Dolby noise reduction manufactured under license from Dolby Laboratories Licensing Corporation. "DOLBY" and the double-D symbol ■ are trademarks of Dolby Laboratories Licensing Corporation.

### Emphasizing Bass (see Fig. E-c)

- 1 While holding down FUNCTION, press ◀▶ • REPEAT. The MB or GRV indicator of the SOUND mode will be lit, and switches to either one each time you press ◀▶ • REPEAT. Either MB or GRV indicator will be lit when the SOUND mode is being used. To cancel the SOUND mode, while holding down FUNCTION, press ◀▶ • REPEAT repeatedly until the MB and GRV indicators go off.

MB: emphasizes bass sound  
GRV: emphasizes deeper bass sound  
no message: off (normal)

#### Note

- If the sound is distorted with the mode "GRV", select the mode "MB" or no message.

### Protecting Your Hearing (AVLS) (see Fig. E-c)

When AVLS (Automatic Volume Limiter System) is turned on, the maximum volume is kept down to protect your ears.

- 1 While holding down FUNCTION, press REW. The AVLS indicator will be lit. To cancel the AVLS, while holding down FUNCTION, press REW. The AVLS indicator goes off.

#### Note

- If the sound is distorted when you listen to the bass-boosted sound with the AVLS, turn down the volume.

#### Notes on FUNCTION

- Even when the tape is stopped, the FUNCTION may be operated. When FUNCTION and other operating buttons are pressed the LED lamp will light to show the present mode, and when FUNCTION and other operating buttons are released, the LED will go off.
- Do not press the FUNCTION button on the Walkman when switching SOUND • AVLS on the remote control.

## Additional Information

### Precautions

#### On batteries

Do not carry the dry batteries with coins or other metallic objects. It can generate heat if the positive and negative terminals of the batteries are accidentally contacted by a metallic object.

#### On the unit

- Do not drop the unit or give a shock to the unit, or it may cause a malfunction.
- Do not leave the unit in a location near heat sources, or in a place subject to direct sunlight, excessive dust or sand, moisture, rain, mechanical shock, or in a car with its windows closed.
- If the unit has not been used for long, set it in the playback mode and warm it up for a few minutes before inserting a tape.

#### On tapes longer than 90 minutes

We do not recommend the use of tapes longer than 90 minutes except for a long continuous playback. They are very thin and tend to be stretched easily.

#### On the remote control

Use the supplied remote control only with this unit.

#### On headphones/earphones

**Road safety**  
Do not use headphones/earphones while driving, cycling, or operating any motorized vehicle. It may create a traffic hazard and is illegal in some areas. It can also be potentially dangerous to play your headphones/earphones at high volume while walking, especially at pedestrian crossings. You should exercise extreme caution or discontinue use in potentially hazardous situations.

#### Preventing hearing damage

Do not use headphones/earphones at high volume. Hearing experts advise against continuous, loud and extended play. If you experience a ringing in your ears, reduce volume or discontinue use.

#### Caring for others

Keep the volume at a moderate level. This will allow you to hear outside sounds and to be considerate to the people around you.

## Maintenance

### To clean the tape head and path

Use the cleaning cassette CHK-1 (not supplied) every 10 hours of use.

#### Note

- Use only the recommended cleaning cassette.

### To clean the exterior

Use a soft cloth slightly moistened in water. Do not use alcohol, benzene or thinner.

#### Note

- Clean the headphones/earphones plug periodically.

## Troubleshooting

### The cassette holder does not open.

- If the tape is playing, stop and then slide OPEN.
- This condition may occur when you remove the power sources during playback, or when you use exhausted dry battery. Set the power sources again or replace the exhausted battery with a new one.

### The volume cannot be turned up.

- Set AVLS to off.

### The tape fast forwards by itself during playback.

- Set BL SKIP to off.

## Specifications

### Tape section

Frequency response (Dolby NR off)  
Playback: 20 - 18,000 Hz

#### Output

Headphones ◯/REMOTE jack  
Load impedance 8 - 300 ohms

### General

#### Power requirements

1.5 V  
One R6 (size AA) battery

#### Dimensions (w/h/d)

Approx. 109.0 x 79.2 x 28.6 mm  
(4 3/8 x 3 1/8 x 1 1/16 inches),  
incl. projecting parts and controls

#### Mass

Approx. 145 g (5.2 oz)  
Approx. 205 g (7.3 oz)  
(incl. a battery and a cassette)

#### Supplied accessories

- Stereo headphones or earphones with remote control (1)
- Carrying case (1)

Design and specifications are subject to change without notice.

This warranty is valid only in the United States.