

## Precautions

- Do not tamper with the four holes on the upper surface of the unit. They are for tuner adjustments to be made only by service technicians.
- Choose the installation location carefully so the unit will not hamper the driver during driving.
- Avoid installing the unit where it would be subject to high temperatures, such as from direct sunlight or hot air from the heater, or where it would be subject to dust, dirt or excessive vibration.
- Use only the supplied mounting hardware for a safe and secure installation.

## Mounting angle adjustment

Adjust the mounting angle to less than 20°.

## How to Detach and Attach the Front Panel

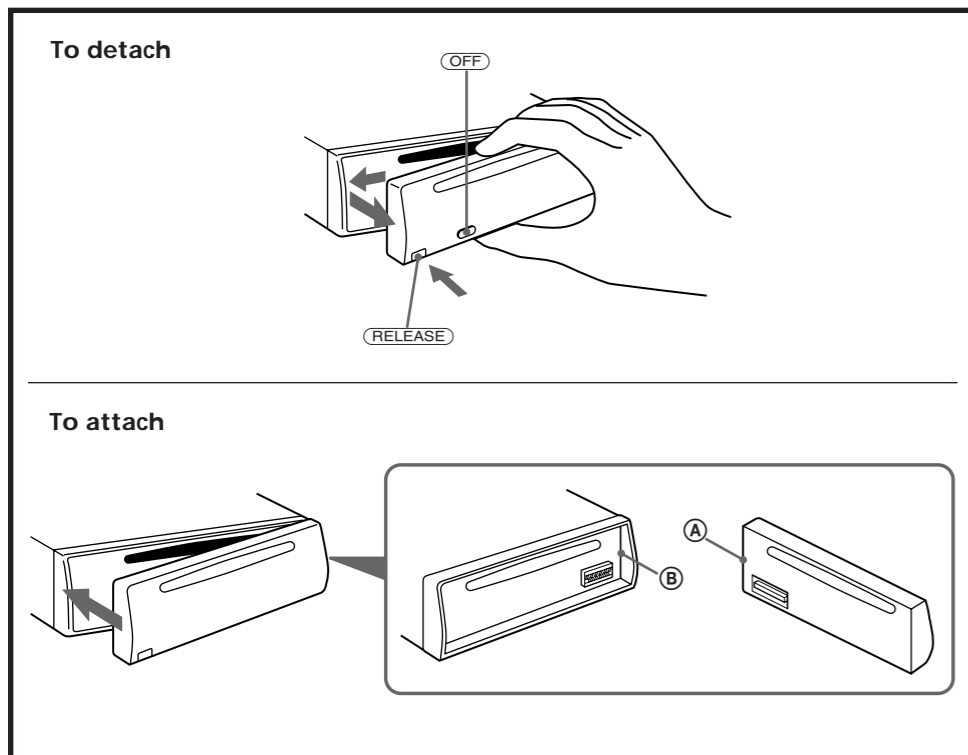
Before installing the unit, detach the front panel.

### To detach

Before detaching the front panel, be sure to press **(OFF)** first. Press **(RELEASE)** to open up the front panel. Then slide the front panel a little to the left, and pull it off towards you.

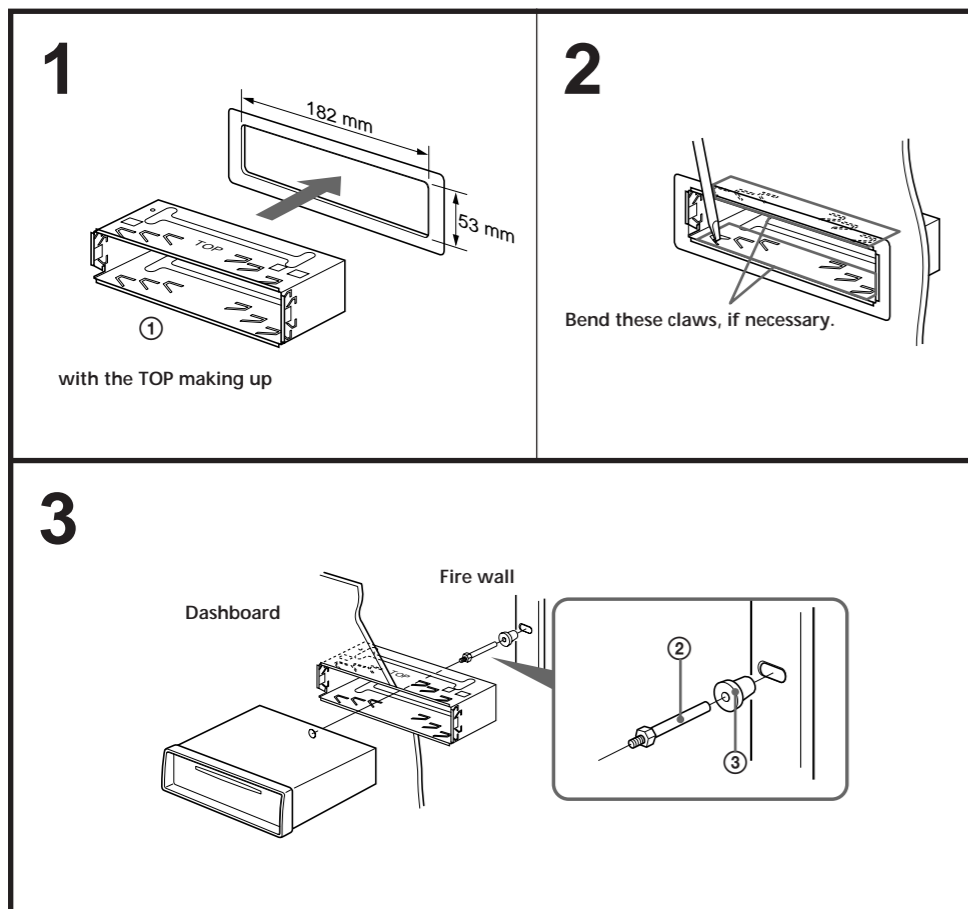
### To attach

Align parts **(A)** and **(B)**, and push the front panel until it clicks.



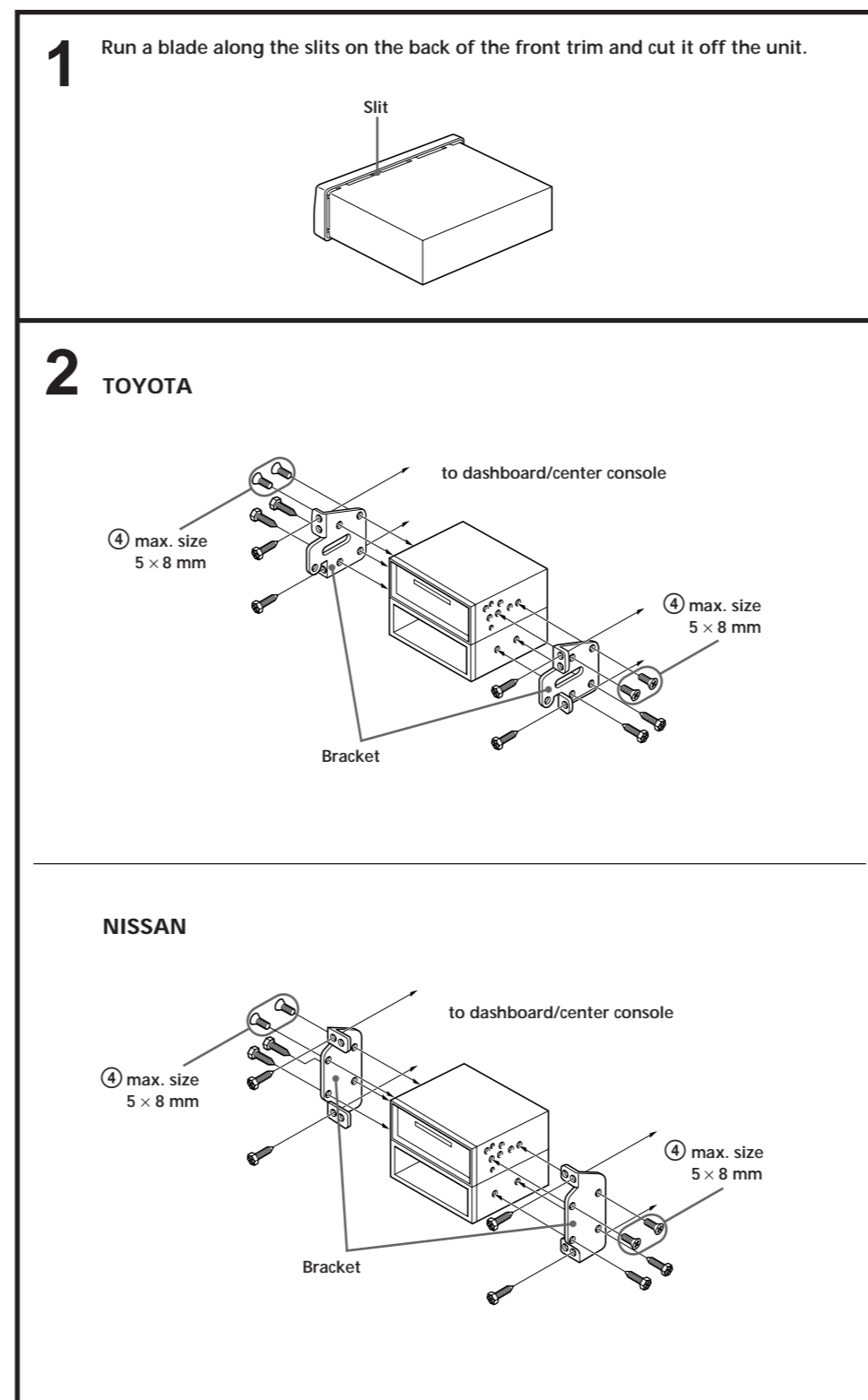
## Mounting Example

Installation in the dashboard



## Mounting the Unit in a Japanese Car

You may not be able to install this unit in some makes of Japanese cars. In such a case, consult your Sony dealer.



# FM/AM Compact Disc Player

Installation/Connections

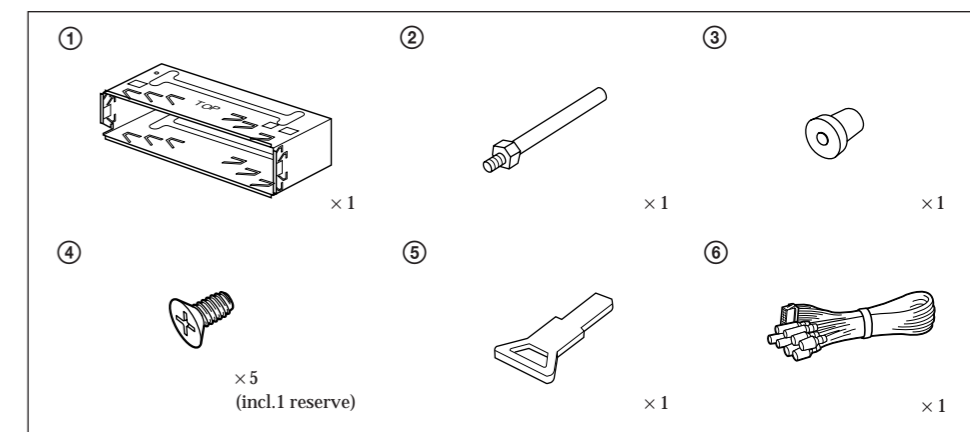
COMPACT  
disc  
DIGITAL AUDIO

CDX-4167

Sony Corporation © 1997 Printed in South Africa

## Parts for Installation and Connections

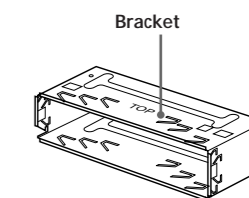
The numbers in the list are keyed to those in the instructions.



The release key ⑤ is used for dismantling the unit. See the operating instructions manual for details.

### Caution

Cautionary notice for handling the bracket ①.  
Handle the bracket carefully to avoid injuring your fingers.



# Connections

## Caution

- This unit is designed for negative earth 12 V DC operation only.
- Before making connections, disconnect the earth terminal of the car battery to avoid short circuits.
- Connect the yellow and red power input leads only after all other leads have been connected.
- Be sure to connect the red power input lead to the positive 12 V power terminal which is energized when the ignition key is in the accessory position.
- Run all earth wires to a common earth point.
- Connect the yellow cord to a free car circuit rated higher than the unit's fuse rating. If you connect this unit in series with other stereo components, the car circuit they are connected to must be rated higher than the sum of the individual component's fuse rating. If there are no car circuits rated as high as the unit's fuse rating, connect the unit directly to the battery. If no car circuits are available for connecting this unit, connect the unit to a car circuit rated higher than the unit's fuse rating in such a way that if the unit blows its fuse, no other circuits will be cut off.

## If Your Car has an Accessory Position on the Ignition Key Switch

### — POWER SELECT Function

To turn the Power Select Function on

Press **OFF** while pressing **SEL**.

The Power Select Function ties the clock display power to the accessory position on the ignition key switch. To avoid battery wear, the clock is not displayed while the unit is initializing.

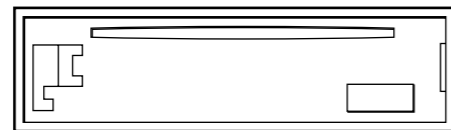
### Note

You cannot operate this function with the optional rotary remote (RM-X2S).

## Frequency Select Switch

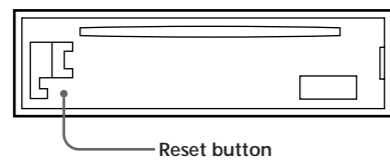
The AM (FM) tuning interval is factory-set to the 9K (50k) position. If the frequency allocation system of your country is based on 10 kHz (200 kHz) interval, set the switch on the bottom of the unit to the 10K (200K) position before making connections.

Change the position with a jeweler's screwdriver, etc.



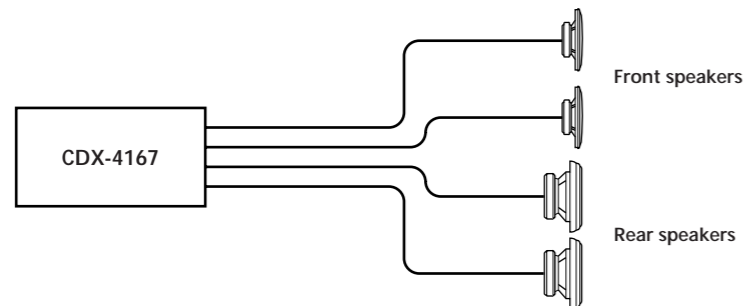
## Reset Button

When the installation and connections are complete, be sure to press the reset button with a ball-point pen etc.

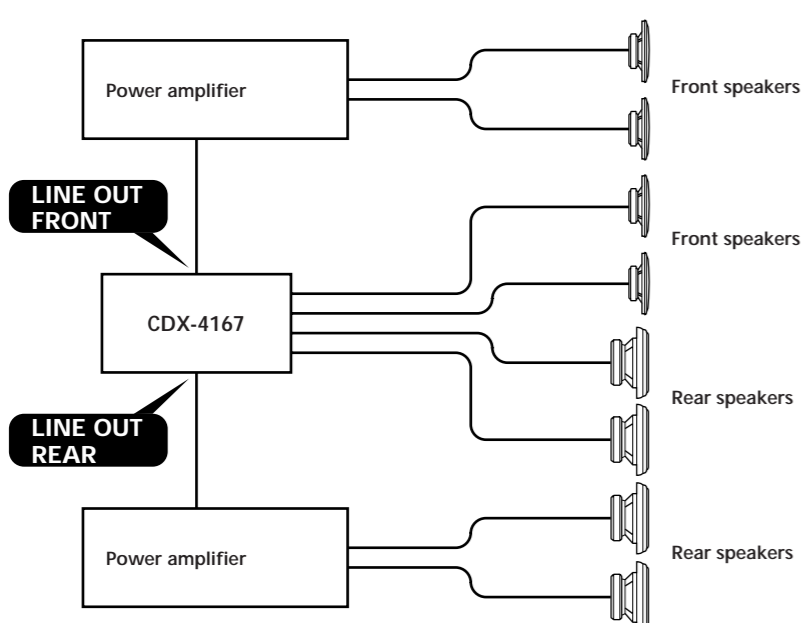


## Connection Diagram

### Example 1



### Example 2



## Connection Example

