

Remote Commander

Operating Instructions

Mode d'emploi (au verso)

RM-EZ4T

© 2007 Sony Corporation Printed in China

English

Notice for the customer in the countries applying EU Directives

The manufacturer of this product is Sony Corporation, 1-7-1 Konan, Minato-ku, Tokyo, Japan. The Authorized Representative for EMC and product safety is Sony Deutschland GmbH, Hedelfinger Strasse 61, 70327 Stuttgart, Germany. For any service or guarantee matters please refer to the addresses given in separate service or guarantee documents.



Disposal of Old Electrical & Electronic Equipment (Applicable in the European Union and other European countries with separate collection systems)

This symbol on the product or on its packaging indicates that this product shall not be treated as household waste. Instead it shall be handed over to the applicable collection point for the recycling of electrical and electronic equipment. By ensuring this product is disposed of correctly, you will help prevent potential negative consequences for the environment and human health, which could otherwise be caused by inappropriate waste handling of this product. The recycling of materials will help to conserve natural resources. For more detailed information about recycling of this product, please contact your local Civic Office, your household waste disposal service or the shop where you purchased the product.



Disposal of waste batteries (applicable in the European Union and other European countries with separate collection systems)

This symbol on the battery or on the packaging indicates that the battery provided with this product shall not be treated as household waste. By ensuring these batteries are disposed of correctly, you will help prevent potentially negative consequences for the environment and human health which could otherwise be caused by inappropriate waste handling of the battery. The recycling of the materials will help to conserve natural resources.

In case of products that for safety, performance or data integrity reasons require a permanent connection with an incorporated battery, this battery should be replaced by qualified service staff only.

To ensure that the battery will be treated properly, hand over the product at end-of-life to the applicable collection point for the recycling of electrical and electronic equipment. For all other batteries, please view the section on how to remove the battery from the product safely. Hand the battery over to the applicable collection point for the recycling of waste batteries. For more detailed information about recycling of this product or battery, please contact your local Civic Office, your household waste disposal service or the shop where you purchased the product.

Setting Up the Remote Commander

About Presetting the Commander

The Commander is preset at the factory to operate Sony brand components. If you're using the Commander with a Sony component, you won't need to preset the Commander before you start using it. To set up the Commander to use with other (non-Sony) manufacturers' components, or to use with a component that is not preset at the factory, you'll need to follow the instructions in this manual to preset the Commander with the correct code number for your components. (See the supplied "Component code numbers" also).

Component that can be preset	Factory setting
TV	Sony TV

Notes

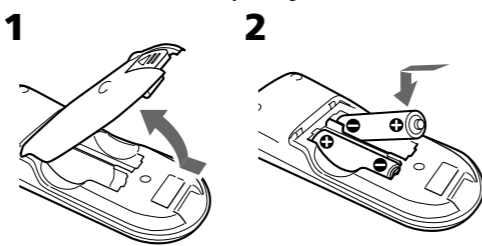
- The Commander can be set up to operate only one component per button – unless their code numbers happen to be the same. For example, you cannot set up the Commander to operate a Sony TV and a Panasonic TV simultaneously (because they use different code numbers).
- You may not be able to operate even a Sony brand component with the factory presetting. In such a case, follow the procedure in "Setting the Code."

Installing the Batteries

Before replacing the batteries, have new ones ready beforehand.

Push open the battery compartment and insert two R6 (size AA) batteries*.

Be sure to line up the + and – on the batteries with the + and – on the battery compartment.



* The supplied manganese batteries are for testing purposes.

When to replace the batteries

Under normal conditions, batteries will last up to one year. If the Commander does not operate properly, the batteries might be worn out. Replace the batteries with new ones.

Notes

- Replace both batteries with new ones.
- Do not take more than 3 minutes to replace the batteries; otherwise, your setting of the code numbers will be erased.

Notes on Batteries

- Do not mix old batteries with new ones or mix different types of batteries together.
- If the electrolyte inside the battery should leak, wipe the contaminated area of the battery compartment with a cloth and replace the old batteries with new ones. To prevent the electrolyte from leaking, remove the batteries when you plan not to use the Commander for a long period of time.

Setting the Code

Follow the steps 1 and 2 below for each component you plan to use with the Commander.

Step 1: Entering the Code Number

- 1 See the supplied "Component code numbers", and find the four-digit code number for the desired component. If more than one code number is listed, use the number that's listed first.

For example, if you're setting up a Sony TV, you would use the code number 8201. If your component isn't listed, see "Searching for the Correct Code."

- 2 Press **SET** more than two seconds. The SET indicator lights up.

- 3 Press the Number buttons to enter the four-digit component code number.

- 4 Press **ENT**. The SET indicator turns off. If the SET indicator flashes five times before lighting up, it means that the setup is incomplete. Confirm the component code number and start over from Step 3.

If the code setting is not finished properly

If you do not input anything into the Commander within 20 seconds between each step, or if you press **SET** while setting the component code, the setup procedure will be cancelled. Start over from Step 2.

Step 2: Checking if the Code Number Works

- 1 Power on the component you want to set up.
- 2 Aim the Remote Commander at the component and press a button to check if that button works. For example, press the **⏻** button to see if it works on your component.
- 3 Check that the other buttons of the Commander are operating the corresponding functions of the component.

You can write down the code number on the label inside the battery compartment lid.

If the Commander Doesn't Seem to Be Working...

- First, try repeating these setup procedures using the other codes listed for your component (see the supplied "Component code numbers").
- If – after trying all the codes listed for your component – you still cannot get the Commander to work properly, try the search method described in "Searching for the Correct Code."

Searching for the Correct Code

You can find a code number available for a component that doesn't have one in the supplied "Component code numbers."

Before starting the Search function

Set the component to the following status so that the Search function works effectively.

TV: Power-on

* If any of these components are assigned to any of the Component Select buttons, you can set a component code using the Search function.

- 1 Press **SET** more than two seconds. The SET indicator lights up.

- 2 Press **PROGRAM +** or **PROGRAM –** and **⏻** in turn until the component reacts as follows:

TV: Powers off

Press **PROGRAM +** to go to the next code number.

Press **PROGRAM –** to go back to the previous code number. The SET indicator flashes once after the numbers have turned one cycle. One cycle means, for example, that the commander finishes searching all the component code numbers allocated to the component.

- 3 Press **ENT**. The SET indicator and the Component button turn off. If the SET indicator flashes five times before turning off, it means that the setup is incomplete. Start over from Step 2.

If the component does not operate properly, repeat steps 1 to 3 and search for another code.

If you still cannot get the Commander to work properly, see "Troubleshooting."

Operating a Component

- 1 Point the Commander directly at the component.
- 2 Press the button for the function you want to use.

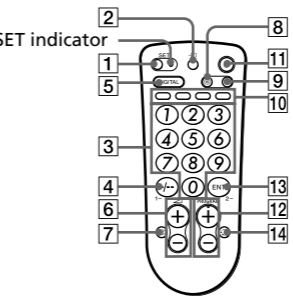
See "Remote Button Descriptions" for complete descriptions of the buttons on the Commander.

Notes on Using the Remote Commander

- Basically, use this Commander in the same way as the Commanders supplied with your components.
- Using this Commander will not increase the functions of your components. The functions of the Commander are limited to the functions of the components themselves. For example, if your TV does not have a MUTING function, **⏻** on this Commander will not function with your TV.
- Some functions of the component may not work with this Commander.

Remote Button Descriptions

Operating a TV



About tactile dots
The number 5 button and **PROGRAM +** each have a tactile dot for convenient use.

- 1 To set up the Commander, press **SET** more than two seconds.
- 2 To change the input mode.
- 3 To change the programme.
- 4 To select double-digit numbers.
- 5 To select DIGITAL.
- 6 **⏻**: Volume up **⏻**: Volume down
- 7 To mute the volume on a TV.
- 8 To switch to Teletext.
- 9 To return from Teletext to TV.
- 10 Fasttext buttons.
- 11 To turn on and off the power of the selected component.
- 12 **PROGRAM +**: Programme up.
- 13 **PROGRAM –**: Programme down.
- 14 To select a number between 20 and 29.
- 14 To operate JUMP, FLASHBACK or CHANNEL RETURN function on the TV.

Specifications

Operable distance	Approx. 7 m (varies depending of the component of each manufacturer)
Power requirements	Two R6 (size AA) batteries
Battery life	Approx. 1 year (varies depending on frequency of button use – up to approx. 300 times per day.)
Dimensions	Approx. 63 × 149 × 30 mm (w/h/d)
Mass	Approx.123 g (including batteries)
Supplied accessories	Operating Instructions (1) R6 (size AA) batteries (2)*

* The supplied manganese batteries are for testing purposes.

Design and specifications are subject to change without notice.

The validity of the CE marking is restricted to only those countries where it is legally enforced, mainly in the countries EEA (European Economic Area).

Troubleshooting

- If you have problems setting up or using the Commander:
- When setting up the Commander, carefully go through the procedures described in "Setting the Code." If the code that's listed first for your component doesn't work, try all the codes for your component – in the order in which they're listed. If all the codes fail to work (or if your component is not listed in this manual), try using the procedures in "Searching for the Correct Code."
- Check that you're aiming the Commander directly at the component, and that there are no obstructions between the Commander and the component.
- Make sure the batteries you're using are not worn out, and that they're inserted correctly.
- Check that the component has infrared remote capability. For example, if your component didn't come with a remote commander, it probably isn't capable of being controlled by a remote commander.
- Should any problem persist, reset the Commander to the factory setting by pressing the **⏻**, **⏻** and **⏻** buttons simultaneously.



Customer Service

If you have any questions or problems concerning the Remote Commander that are not covered in this manual, please call the customer remote helpline. The number is mentioned in the warranty card.

Component code numbers

English

The following tables show brand names and their corresponding code numbers.

To set a Component Code (see the Operating Instructions for details)



TV

Brand	Code No.
Sony	8201, 8202, 8203, 8204, 8205, 8206, 8207, 8208, 8209, 8210
Aiwa	8051, 8127
Akai	8061, 8020, 8056, 8062
Alba	8062
B&O	8083
(Bang & Olufsen)	
Beko	8025
Bestar	8013
Blaupunkt	8026
Blue sky	8013
Brandt	8037
Brionvega	8048
Bush	8117, 8075, 8062, 8010, 8115
Clatronic	8013, 8014
Continental	8076
Crown	8024, 8033
Daewoo	8013, 8119
Deccacolour	8012, 8084, 8085
Dual	8013
Emerson	8086
Ferguson	8038, 8042, 8037
First line	8013, 8056
Fisher	8056
Fraba	8013
GoldStar/LG	8097, 8100, 8018, 8013, 8113
Goodmans	8020, 8062, 8037, 8013, 8014, 8015, 8075, 8116
Grundig	8090, 8026, 8027
Hansol	8123
Hitachi	8089, 8092, 8093, 8052, 8053, 8010, 8015, 8104
Hyper	8025
ICE	8062
Inno-Hit	8010
Irradio	8062
JVC	8077, 8062
Kendo	8013
Kiton	8010
Lenco	8105
Loewe	8101, 8018, 8106
Mark	8013
Matsui	8090, 8064, 8056, 8033, 8076, 8026
Medion	8013
Mitsubishi	8071, 8072, 8069, 8070
Nokia	8020, 8021, 8036, 8035, 8034
Nokia/ITT	8034, 8035
Nokia Oceanic	8036, 8035
Nordmende	8044, 8039, 8040
Onwa	8062
Orion	8051, 8015

Brand	Code No.
Panasonic	8095, 8079, 8109, 8110
Philips	8086, 8087, 8088, 8089, 8094, 8097, 8100, 8101, 8013, 8014, 8015, 8019
Phonola	8013, 8015
Pioneer	8059
Provision	8013
PYE	8013
Radio	8013
Radiola	8015
Roadstar	8125, 8114
SABA	8099, 8032, 8037, 8023, 8039, 8040, 8044, 8042
Salora	8020
Samsung	8089, 8096, 8084, 8085, 8018, 8012, 8118, 8124, 8094
Sanyo	8056, 8107
Schneider	8094, 8013, 8062, 8105, 8112
SEG	8086,8105
Seleco	8031
Sharp	8082
Siemens	8026, 8027
Supertech	8013
Supervision	8013
Tandberg	8031
Tatung	8013
Teac	8010
Techimagen	8013
Telefunken	8099, 8032, 8037, 8040, 8039, 8043, 8023
Thomson	8099, 8037, 8032, 8042, 8044
Toshiba	8058, 8057, 8102, 8114
UNITED	8126
Universum	8013, 8020
Vestel	8013
VIETA	8122
Watson	8013, 8014
W.W.House	8013

