

## SmartST™ Professional for Palm OS® 5

### Quick Start Guide



Printed in Japan

## WELCOME

Congratulations on the purchase of your SmartST™ Professional for Palm OS® 5 navigation solution.

You will have received the following material:

- SmartST Professional software.
- Map data for your region.
- User Manual and Quick Start Guide in Adobe® Reader® format.
- Adobe® Reader®.
- Application Product Key and Map Product Key.

Use this guide to help you get started with SmartST Professional. The following steps are described in more detail in your User Manual.

For Activate Software to operate with a USB connection, Windows® 98 & ME users should download and install all the latest Microsoft Windows updates

## GET READY

### Step 1

Make sure you have Palm™ Desktop and HotSync® installed on your computer (found on the installation CD supplied with your handheld).

### Step 2

- If you use a memory card writer to install a map to a memory card, connect it to your computer now.
- Alternatively, if you are a Sony CLIE™ user, you can use a memory card writer, or install maps directly to a memory card plugged into your handheld using either the MS Import or Data Import utility. You will find one of these applications on the installation CD supplied with your handheld.

Note: On the CD they are called MS Export or Data Export.

### Step 3

Connect the handheld to your computer.

Note: Please refer to section 2 of the User Manual for minimum memory requirements.

## INSTALL and ACTIVATE

### Step 4

Insert a memory card into your handheld.

### Step 5

Insert the SmartST Professional CD into your computer and follow the prompts to install the application.

### Step 6

From the Main Menu, select “SmartST Application.”

### Step 7

At the Install screen select “Install Application.”

### Step 8

Select the HotSync® User name of your handheld device and select “Done.”

### Step 9

Perform a HotSync® operation to install SmartST Professional onto your handheld.

### Step 10

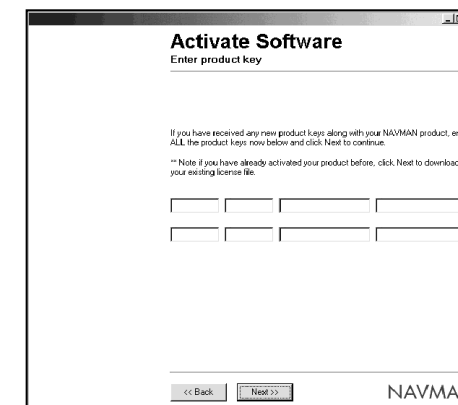
Make sure your computer has an internet connection available.

### Step 11

- If you plan to use a memory card writer to install a map to a memory card, remove the memory card from your handheld and insert it into the writer.
- Alternatively, if you plan to install maps directly to a memory card plugged into your handheld, run MS Import or Data Import on your handheld.

### Step 12

From the Main Menu select “Activate Software” and follow the prompts. You will need an Application Product Key and a Map Product Key on this Quick Start Guide.



## INSTALLING MAPS

### Step 13

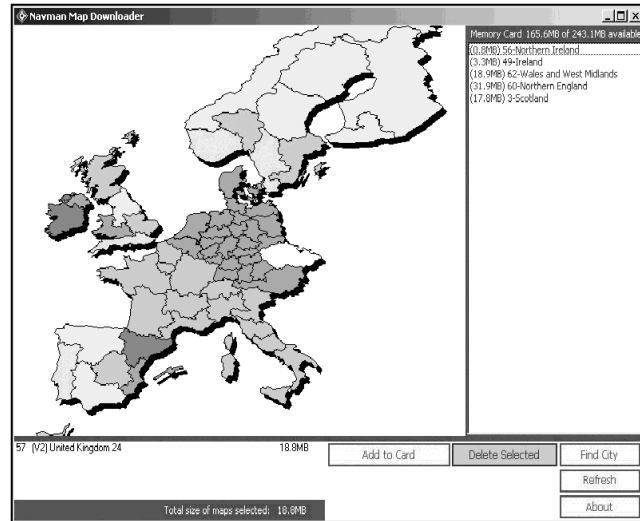
Ensure MS Import or Data Import is active (where applicable).

### Step 14

From the Main Menu on your computer, select "Install Maps."

### Step 15

Select a map region to install. Select the "Add to Card" button to install the map region onto a memory card plugged into your handheld or in a memory card writer.



## CONFIGURE YOUR GPS

Note: Sony Car Cradle users do not need to configure GPS. Go to step 20, Planning a Route.

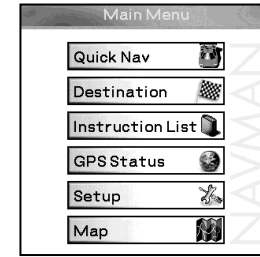
### Step 16

From the Launcher screen on your handheld, tap on SmartST.



### Step 17

The SmartST Professional Main Menu is displayed.



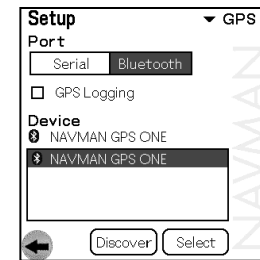
### Step 18

If you are using a Serial GPS receiver or a Bluetooth GPS receiver, you will need to configure it when using it for the first time.

- From the Main Menu, tap on "Setup."
- From the drop-down list, tap on "GPS."

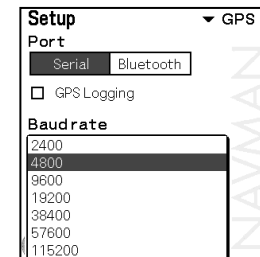
#### Bluetooth GPS Users:

- Switch on the GPS receiver now.
- From the Port options, select "Bluetooth." Tap on "Discover."
- When your receiver is found, highlight it and tap on "Select."



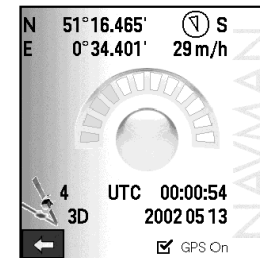
#### Serial GPS Users:

- From the Port options, select "Serial."
- Refer to the instructions supplied with your GPS receiver to set the "Baud rate."



### Step 19

Turn on the GPS connection. From the Main Menu, tap on "GPS Status." Tick the "GPS On" box, and return to the Main Menu.



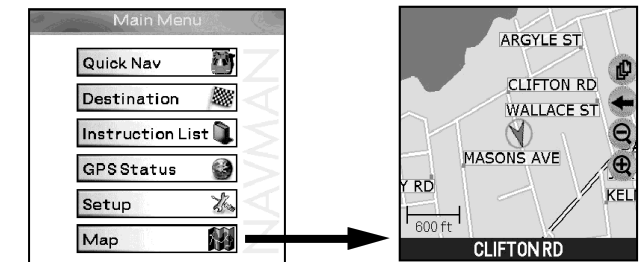
## PLANNING A ROUTE

Note: Sony Car Cradle users: For your safety, a number of functions are unavailable when your handheld is attached to the Car Cradle. Before you plan a route, detach your handheld from the Car Cradle. Please refer to the User Manual for more information about using the Sony Car Cradle with SmartST.

### Step 20

From the Main Menu, tap on "Map." The Map Screen is displayed. The message "Waiting for GPS" will disappear once a GPS fix is obtained.

Note: A clear view of the sky is required to obtain a GPS fix. Refer to Section 7-5 of the User Manual for additional information.

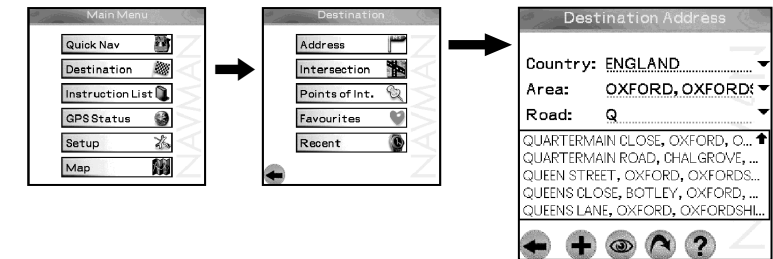


### Step 21

Tap the back icon on the Map Screen to return to the Main Menu.

### Step 22

Tap "Destination," then "Address."



### Step 23

Complete the address details. Enter the first few letters then select the entry you want from the drop-down list.

#### Sony Car Cradle users:

- Tap + and the destination address is saved as a favourite.
- Connect your handheld to the Car Cradle, tap several times, then the Main Menu is displayed.
- From the Main Menu, tap "Destination," then "Favourites."
- Select your destination from the Favourites List.

### Step 24

Tap the route icon and your route is calculated and displayed on the Map. Follow the voice prompted screen instructions to reach your destination.