

Cassette Player

Operating Instructions

Инструкция по эксплуатации (обратная)



WM-EX621

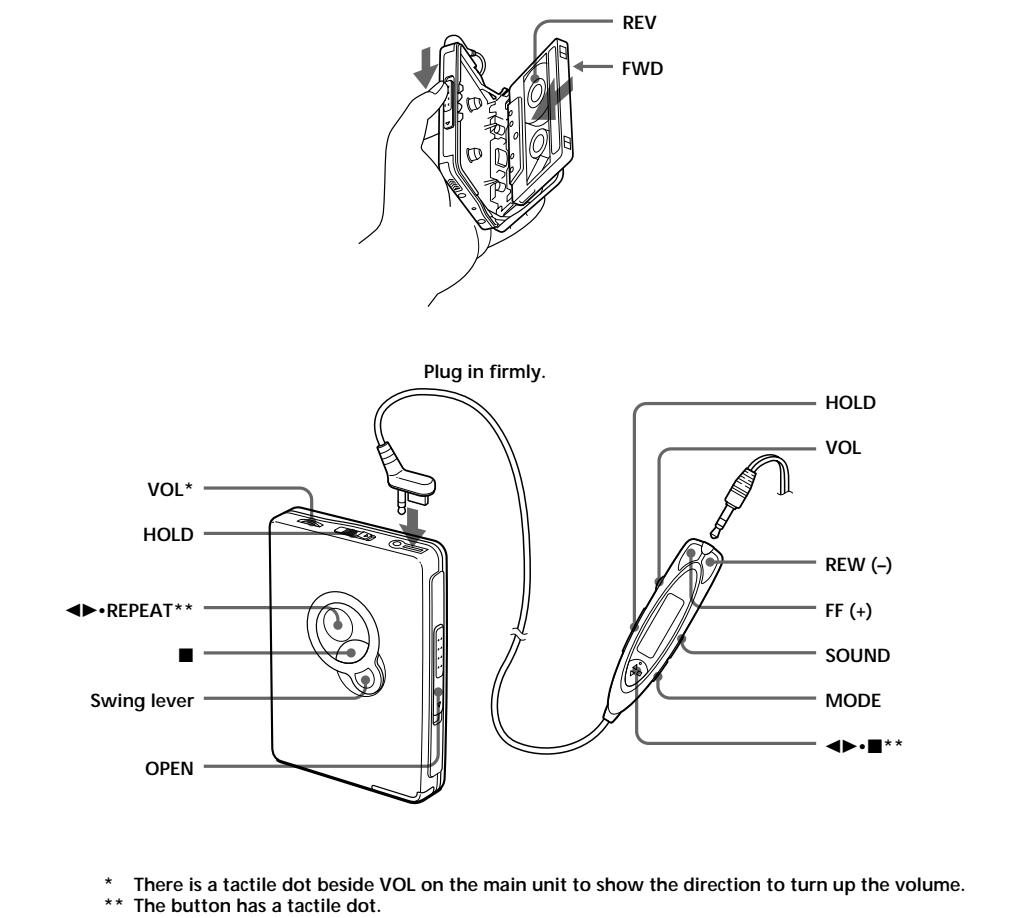
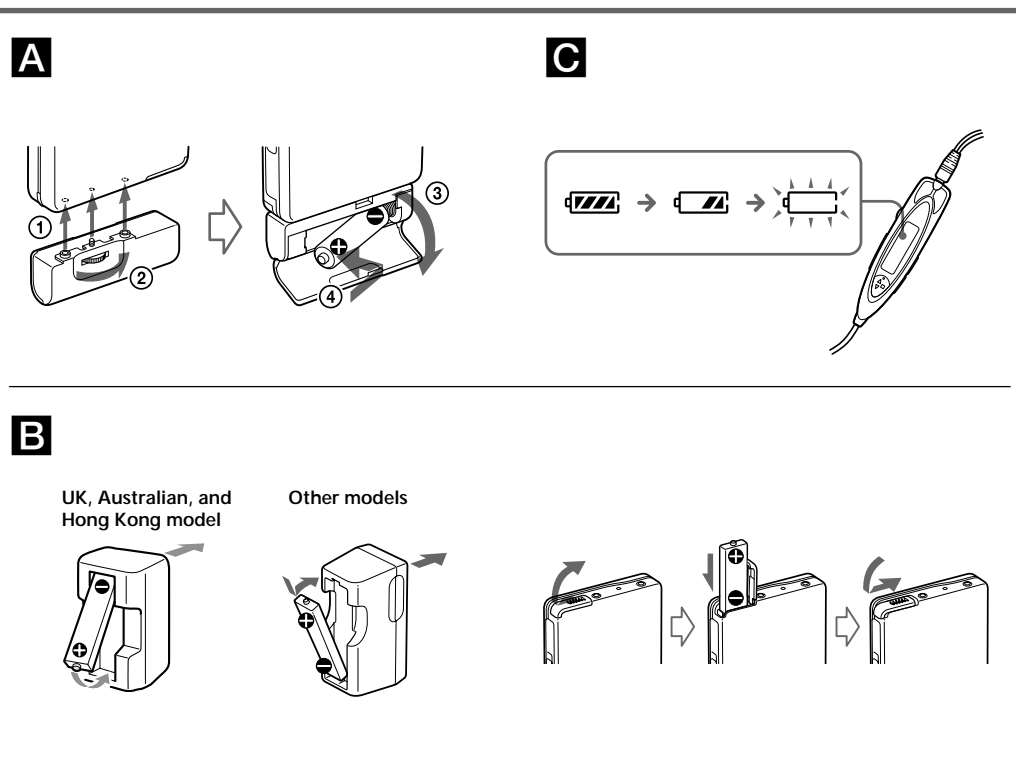
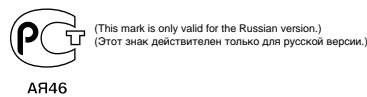
Sony Corporation ©2001 Printed in Malaysia



eco info Printed using VOC (Volatile Organic Compound)-free vegetable oil based ink.

<http://www.world.sony.com/>

WALKMAN is a registered trademark of Sony Corporation.
WALKMAN является зарегистрированным товарным знаком корпорации Sony.



Specifications

Frequency response
Playback: 30 - 18 000 Hz

Output
Headphones (∅) jack
Load impedance 8 - 300 Ω

Power requirements
1.5 V
Rechargeable battery
One R6 (size AA) battery

Dimensions (w/h/d)
Approx. 77.1 × 108.0 × 20.5 mm

Mass

Approx. 158 g

Supplied accessories

- Battery case (1)
- Stereo headphones or earphones with remote control (1)
- Battery charger (1)
- Rechargeable battery (NC-6WM, 1.2 V, 600 mAh, Ni-Cd) (1)
- Carrying pouch (1)
- Rechargeable battery carrying case (1)

Design and specifications are subject to change without notice.

Battery life (Approx. hours) (in playback)	(JEITA*)
Rechargeable NC-6WM fully charged	14
Sony alkaline LR6 (SG)**	46
Rechargeable NC-6WM Sony alkaline LR6 (SG) used together	60

* Measured value by the standard of JEITA (Japan Electronics and Information Technology Industries Association).
(Using a Sony HF series cassette tape)
**When using a Sony LR6(SG) "STAMINA" alkaline dry battery (produced in Japan).

Note

- The battery life may be shorter depending on the operating condition, the surrounding temperature and battery type.

English

WARNING

To prevent fire or shock hazard, do not expose the unit to rain or moisture.

Do not install the appliance in a confined space, such as a bookcase or built-in cabinet.

- To prevent fire, do not cover the ventilation of the apparatus with newspapers, table-cloths, curtains, etc. And don't place lighted candles on the apparatus.
- To prevent fire or shock hazard, do not place objects filled with liquids, such as vases, on the apparatus.
- Treat batteries as toxic waste. Do not dispose with regular garbage.

Preparations

Prepare a dry battey (not supplied) or the rechargeable battery (supplied).

Dry Battery **A**

Attach the supplied battery case, and then insert one R6 (size AA) battery with correct polarity.

Note

- For maximum performance we recommend that you use a Sony alkaline battery.

Rechargeable Battery **B**

1 Insert the supplied rechargeable battery (NC-6WM) into the charger with correct polarity.

2 Plug in the charger to the house current (mains).

UK, Australian, and Hong Kong model: Full charging takes about 3.5 hours.

U.S.A., Canada, European Continent and Saudi Arabian model: Full charging takes about 2.5 hours.

Korean model: The full charging time depends on the voltage of your mains.

110 V: 10 hours

220 V: 2.5 hours

Other models: The full charging time depends on the voltage of your mains.

120 V: 10 hours

220 - 240 V: 2.5 hours

3 Insert the fully charged battery into the rechargeable battery compartment.

You can charge the battery about 300 times.

When to replace/charge the battery **C**

Replace or charge the battery when "□" flashes in the display on the remote control.

Note

- After the battery is replaced, the setting of the SOUND and MODE buttons will be erased.

Playing a Tape

- 1 Insert a cassette and if the HOLD function is on, slide the HOLD switch in the opposite direction of the arrow to unlock the controls.
- 2 Press ◀▶(play) •■(stop) on the remote control and adjust the volume with VOL. (On the main unit, press ◀▶•REPEAT.)

When adjusting the volume on the main unit

Set the VOL control on the remote control at maximum.

When adjusting the volume on the remote control

Set the VOL control on the main unit to around 6.

Operation on the remote control

To	Press
Switch playback to the other side	◀▶•■ more than a second during playback
Stop playback	◀▶•■ once during playback
Fast forward*	FF during stop
Rewind*	REW during stop
Play the other side from the beginning (Skip Reverse function)	FF for 2 seconds or more during stop
Play the same side from the beginning (Rewind Auto Play function)	REW for 2 seconds or more during stop
Repeat the current track (Repeat Single Track function)	◀▶•■ twice during playback <i>To stop a single repeat, press ▶▶•■ once</i>

Operation on the main unit

To	Do this
Switch playback to the other side	Press ◀▶•REPEAT during playback.
Stop playback	Press ■.
Fast forward*	Move the swing lever toward ►►FF CUE once during stop.
Rewind*	Move the swing lever toward REVIEW REW ◀◀ once during stop.

To	Do this
Play the other side from the beginning (Skip Reverse function)	Move and hold the swing lever toward ►►FF CUE for 2 seconds or more during stop.
Play the same side from the beginning (Rewind Auto Play function)	Move and hold the swing lever toward REVIEW REW ◀◀ for 2 seconds or more during stop.
Repeat the current track (Repeat Single Track function)	Press ◀▶•REPEAT for 2 seconds or more during playback. <i>To stop a single repeat, press it again.</i>

* If ◀▶•■ on the remote control is pressed during fast forward or rewind, the Walkman switches to playback.

Other tape operations

To play the next track/succeeding 9 tracks from the beginning (AMS*)

On the remote control: Press FF once/repeatedly during playback.

On the main unit: Move the swing lever toward ►►FF CUE once/repeatedly during playback.

To play the current track/previous 8 tracks from the beginning (AMS*)

On the remote control: Press REW once/repeatedly during playback.

On the main unit: Move the swing lever toward REVIEW REW ◀◀ once/repeatedly during playback.

* Automatic Music Sensor

Fast forward/rewind while listening to the sound (CUE/REVIEW)

On the remote control: Press and hold FF/REW during playback and release it at the point you want.

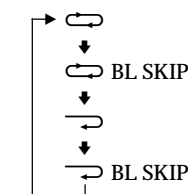
On the main unit: Move and hold the swing lever toward ►►FF CUE/REVIEW REW ◀◀ during playback and release it at the point you want.

Using Other Functions

Adjusting Playback Mode

You can adjust the playback direction mode (◀◀ or ▶▶) as well as the BL SKIP mode (on or off).

1 Press MODE repeatedly. With each press the indications change as follows:



- When "BL SKIP" is displayed, the tape is fast-forwarded to the next track if there is a blank space of longer than 12 seconds. You will hear repeated sets of three short beeps when skipping a blank.
- When "◀◀" is displayed, both sides of the tape is played repeatedly.
- When "▶▶" is displayed, both sides of the tape is played once (if you start from R (REV) side, only REV side will be played).

Note

- You cannot adjust the playback mode during fast-forward or rewind.

Emphasizing Sound

1 Press SOUND repeatedly. With each press, the indications change as follows:

- RV (Sound Revitalizer): emphasizes treble sound
- MB (Mega Bass): emphasizes bass sound (moderate effect)
- GRV (Groove): emphasizes bass sound (strong effect)
- none: normal (no effect)

Notes

- If the sound is distorted with the mode "GRV", turn down the volume of the main unit or select other modes.
- You cannot change the mode during fast-forward or rewind.

Protecting Your Hearing — AVLS (Automatic Volume Limiter System)

Hold down MODE until "AVLS" appears in the display.

To cancel the AVLS function, hold down MODE again until "AVLS" disappears.

Note

- You cannot turn on/off the AVLS function during fast-forward or rewind.

Locking the Controls — HOLD Function

Slide the HOLD switch in the direction of the arrow to lock the controls of the Walkman or the remote control.

Precautions

On rechargeable battery and charger

- Remove the charger unit from the wall outlet as soon as possible after the rechargeable battery has been charged. Overcharging may damage the rechargeable battery.
- The battery charger and the rechargeable battery may become warm during charging, but this is not a problem.
- Do not tear off the film on the rechargeable battery.
- Use only the supplied battery charger to charge the supplied rechargeable battery.
- Be sure not to short-circuit the battery. When you carry it with you, use the supplied carrying case. If you are not using the case, do not carry the battery with other metallic objects such as keys rings in your pocket.
- If the rechargeable battery is new or has not been used for a long time, it may not be charged completely until you use it several times.
- The nameplate indicating the operating voltage, power consumption, etc. is located on the bottom exterior of the battery charger.

On batteries

- Do not charge a dry battery.
- Do not carry the dry or rechargeable batteries with coins or other metallic objects. It can generate heat if the positive and negative terminals of the batteries are accidentally contacted by a metallic object.
- When you do not use the Walkman for a long time, remove the battery to avoid any damage caused by battery leakage and subsequent corrosion.

On handling

- Do not leave the unit in a location near heat sources, or in a place subject to direct sunlight, excessive dust or sand, moisture, rain, mechanical shock, or in a car with its windows closed.
- The LCD display may become hard to see or slow down when using the unit at high temperatures (above 40°C/104°F) or at low temperatures (below 0°C/32°F). At room temperature, the display will return to its normal operating condition.
- Do not use cassettes longer than 90 minutes except for long continuous playback.
- If the unit has not been used for long, set it in the playback mode to warm up for a few minutes before you start using again.

On the remote control

Use the supplied remote control only with this unit.

On headphones/earphones

Road safety

Do not use headphones/earphones while driving, cycling, or operating any motorized vehicle. It may create a traffic hazard and is illegal in some areas. It can also be potentially dangerous to play your headphones/earphones at high volume while walking, especially at pedestrian crossings. You should exercise extreme caution or discontinue use in potentially hazardous situations.

Preventing hearing damage

Do not use headphones/earphones at high volume. Hearing experts advise against continuous, loud and extended play. If you experience a ringing in your ears, reduce volume or discontinue use.

Caring for others

Keep the volume to a moderate level. This will allow you to hear outside sounds and to be considerate to the people around you.

On maintenance

To clean the tape head and path

Use the cleaning cassette CHK-1W/C-1KW (not supplied) every 10 hours of use.

Use only the recommended cleaning cassette.

To clean the exterior

Use a soft cloth slightly moistened in water. Do not use alcohol, benzine or thinner.
Clean the headphones/earphones and remote control plugs and battery case terminals (both inside and outside) periodically.

