

TDM-NC1

Quick Setup Guide



© 2007 Sony Corporation
Printed in Malaysia

This Quick Setup Guide explains the preparation needed to enjoy music with TDM-NC1.

For details on each step, refer to the Operating Instructions/M-crew Server Installation Instructions in the supplied CD-ROM.

- When using this unit with a wired network, you need a network cable (not supplied).
- When using this unit with a wireless network, you need a wireless LAN router or wireless access point (not supplied).
- This unit cannot connect with a computer directly using a wireless ad-hoc network.

Check the following website for TDM-NC1's latest information, FAQ (Frequently Asked Questions), and firmware updates;

USA:
<http://esupport.sony.com/?ref=http%3A//www.sony.com/index.php>

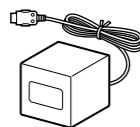
Canada:
http://www.sony.ca/sonyca/view/english/warranty/consumer_support.shtml

Europe:
<http://support.sony-europe.com/main/main.asp?l=en>

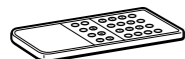
STEP ①

Check the Supplied Items

- Unit



- Remote with battery



- TDM-NC1 Operating Instructions/M-crew Server Ver. 2.5 software CD-ROM



STEP ②

Install M-crew Server

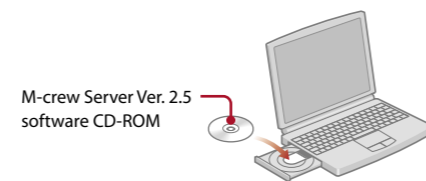
By installing M-crew Server software onto your computer, you can enjoy listening to music files stored on your computer through this unit.

Installation may take some time depending on the environment. A progress bar is displayed while installation is underway. Wait until the installation is finished.

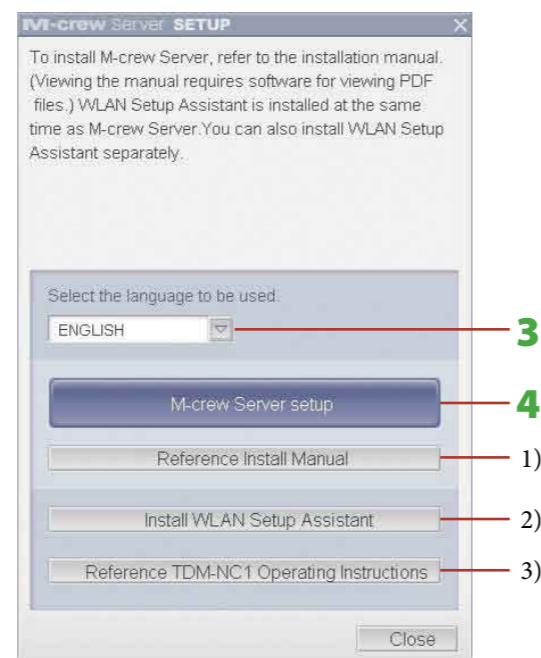
1 Turn on your computer and login as an administrator.

Wait for Windows to load.

2 Insert the supplied CD-ROM into the CD-ROM drive of your computer.



The "M-crew Server SETUP" window appear.



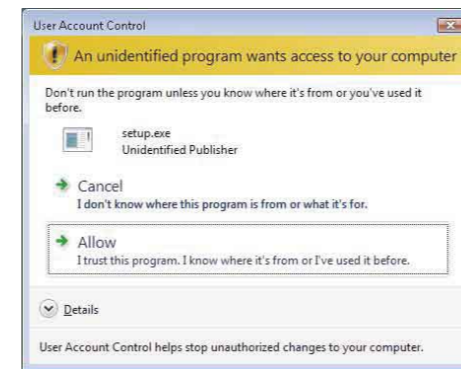
- 1) Click to display the M-crew Server Installation Instructions.
- 2) Click to start up the WLAN Setup Assistant.
- 3) Click to display the TDM-NC1 Operating Instructions.

Notes

- If the window does not open, double-click the CD-ROM Setup.exe icon.
- While the installation is still in progress, do not interrupt the operation or take the CD-ROM out of the CD-ROM drive. Doing so may render it impossible to install the software thereafter.

For Windows Vista users

The "Auto Play" window appears, click [Run setup.exe] to install the program. Then, the "User Account Control" (UAC) window appears, click [Allow]. If you click [Cancel], you will not be able to start the installation.



3 Select the language to be used.

4 Click [M-crew Server setup].

The installation starts. Follow the on-screen instructions.

Notes

- If ".NET Framework" (2.0 or higher) is not installed on your computer, the ".NET Framework Installer" window appears. Click [Install] to install ".NET Framework 2.0" and follow the displayed instructions.
- A warning window may appear during installation of Windows Media Format SDK 9.5.



To continue installing, click [OK]. For details, refer to the M-crew Server Installation instructions "Installing M-crew Server".

5 After the installation is completed, click [Reboot] to restart your computer.

After restarting your computer, the "AUTO LINK FOLDER SETUP" window appears automatically. Go to STEP ③.

STEP ③

Make the AUTO LINK FOLDER Settings

When the AUTO LINK FOLDER settings are completed, all supportable music files in the folder and the sub folder that exists on the path indicated in the window are automatically imported to M-crew Server.

If many songs are stored on your computer, loading time may take longer.



1 Click to place a check next to the directory path that contains the files to be loaded.

Click again to remove checks next to paths that are not to be loaded.

Tip

Sub-folders of the selected folder are also subject to the AUTO LINK function.

2 Click [Next].

The music files located in the checked directory path(s) are loaded automatically. The "ICF SETTINGS" window should automatically appear. Go to STEP ④.

For Windows Vista users

The "User Account Control" (UAC) window appears, click [Allow]. If you click [Cancel], you will not be able to start the installation.

Note

All supportable music files that exist in the path indicated in the window are automatically loaded to M-crew Server.

If the "Windows Security Alert" window appears

Click [Unblock] to unblock the program.

Make sure that the "M-crew Server task tray icon" appears in "Name", then click [Unblock]. If you click [Keep Blocking], you will be unable to use M-crew Server. For details, refer to "Registering the TDM-NC1 on your computer manually" in the M-crew Server Installation instructions.

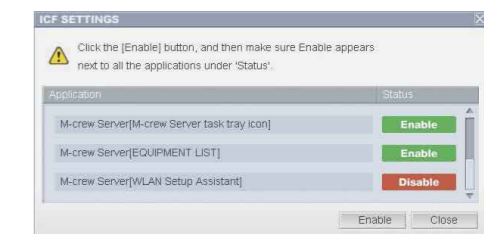
In some cases, the "Windows Security Alert" window appears in STEP ④.



STEP ④

Make the Windows Firewall Settings

This setting opens the Windows Firewall so you can enjoy music files stored on your computer via the unit.



Note

If the "ICF SETTINGS" window does not automatically appear, click [Start] - [All Programs] - [Mcrew Server] - [TOOLS] - [ICF Settings] in that order.

For Windows Vista users

The "User Account Control" (UAC) window appears, click [Allow]. If you click [Cancel], you will not be able to start the installation.

1 Click [Enable].

"Enable" or "Disable" appears for each item. If "Disable" appears, click [Enable] repeatedly until "Enable" appears for all status items.

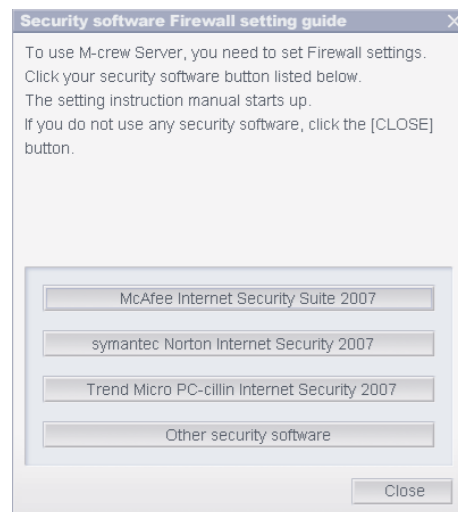
2 Click [Close].

The "Security software Firewall setting guide" window appears automatically. Go to STEP ⑤.

STEP ⑤

Make the Security Software Firewall Settings

If commercially available anti-virus software is installed on your computer, this setting opens the Firewall. If the security software is not installed on your computer, click [Close] then go to STEP ⑥.



1 Click your security software.

The web browser is activated, and the setting guide of your security software appears. If your security software is not on the list, click [Other security software].

Note

To display the guide (web browser), your computer needs to be connected to the Internet.

2 Follow the on-screen message.

Note

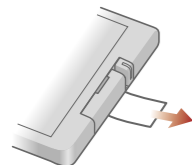
After installing M-crew Server, the  task tray icon appears on the taskbar. Refer to "Troubleshooting" in the Operating Instructions.

STEP ⑥

Set up TDM-NC1

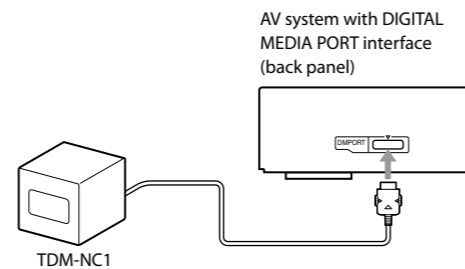
1 Prepare the remote.

Pull out the insulating sheet.



2 Install the TDM-NC1.

Connect the DIGITAL MEDIA PORT cable of this unit to an AV system (DAV series, etc.).

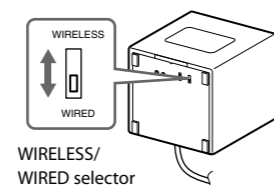


Note

Make sure the AV system is turned off before connecting.

STEP ⑦

Make the Wired or Wireless Settings

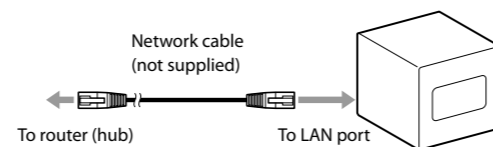


Slide the selector on the bottom of the unit to WIRED (Case A) or WIRELESS (Case B) according to your network connection.

Case A: Make the wired connection

1 Connect the TDM-NC1 to the network using a wired connection.

Connect the TDM-NC1 to your router (hub) by using a network cable (not supplied). Check that the WIRELESS/WIRED selector on the unit is set to WIRED.



Note

When using the TDM-NC1 with a fixed IP address, refer to "Advanced network settings" in the Operating Instructions.

2 Turn on the AV system connected to the unit, and switch the AV system function to DMPORT.

3 Go to STEP ⑧ to check the operations.

Case B: Make the wireless connection

1 Turn on the AV system connected to the unit, and switch the AV system function to DMPORT.

2 Confirm the settings of your wireless system.

Check the following items of your wireless LAN router to set the same information for the TDM-NC1.

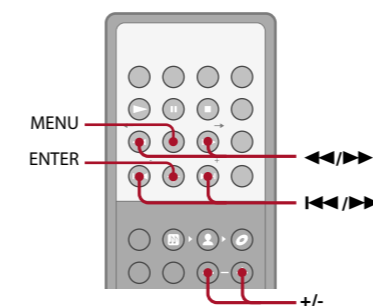
SSID (Wireless Network Name): _____

If your wireless LAN router security is enabled,
Wireless Network Key: _____

Tips

- For details on how to check the wireless LAN router settings, refer to the operation manual of your wireless LAN router.
- In some case, SSID name and wireless network key numbers/characters are written on the wireless LAN router.
- Check that your wireless LAN router uses the latest firmware version. For details, refer to the operation manual of your wireless LAN router.

3 Press MENU.



4 Press <Left Arrow> or <Right Arrow> repeatedly until "Wi-Fi SETUP?" appears in the unit display window, then press ENTER.

"SSID?" appears.

5 Press ENTER.

"Searching" appears.

6 Press <Left Arrow> or <Right Arrow> repeatedly until your wireless LAN router SSID name appears, then press ENTER.

If you set the wireless network key in the wireless LAN setting, "KEY?" appears. Press ENTER.

If you do not set the wireless network key, the unit restarts, go to STEP ⑧.

7 Enter the wireless network key numbers/characters.

Use <Left Arrow> / <Right Arrow> to choose the character, and <Left Arrow> / <Right Arrow> to skip entered digits.

You can also choose letter types using +/- . Letter types changes as shown below:

upper case ↔ lower case ↔ number ↔ symbol ↔ space

8 Press ENTER.

The unit restarts, go to STEP ⑧.

Note

If you set wireless network key (WEP key) to other than "WEP key No. 1", you need to select the Case C connection. Refer to "Case C: Wireless connection (setting up by the computer)" in the Operating Instructions.

STEP ⑧

Check the Operations

1 Make sure the display message of the unit.

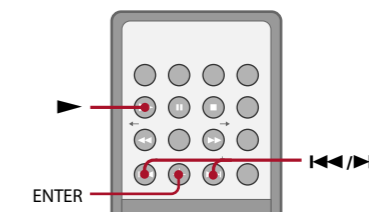
The message "Configuring" appears, then "Loading" follows and then disappears. Go to step 4.

If "SERVER?" appears, go to step 2.

Notes

- If "Check Net" appears, check the network settings in STEP ⑦. Or, the wireless signal may be weak or out of range, move the unit closer to the wireless access point.
- If "No Server" appears, do the following:
 - Make sure the Firewall setting are correct.
 - Right click the M-crew Server task tray icon in the computer's task tray, then select [Stop Music Service], and right click the icon again. Then, select [Start Music Service] to restart the M-crew Server.
 - Restart your computer.
 - Execute "DataBaseClear.exe" to initialize the database (usually located in C:\Program Files\Mcrewsrver).
 - Input the wireless network key numbers/characters again.
- If the "Configuring" or "Loading" messages do not disappear after a few minutes, or other messages mentioned above appear, refer to the "Troubleshooting" in the Operating Instructions.

2 Press ENTER.

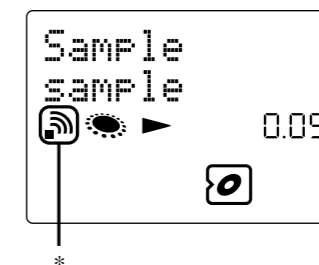


3 Press <Left Arrow> or <Right Arrow> repeatedly until "M-crew Server v2 on XXXX (your computer name)" appears, then press ENTER.

4 Press <Right Arrow> and check that music or sample music is played.

Notes

- When playing the sample music, the unit display is shown below.



* This icon appears when connecting the unit by wireless connection.

- If no sound is heard, check the following:
 - The connected AV system's volume is zero.
 - The connected AV system is not in DMPORT function.
- For any other problems, refer to "Troubleshooting" in the Operating Instructions.

The TDM-NC1's setup procedure is finished. For further operations, refer to the Operating Instructions located in the "Audio system Operating Instructions" folder on the supplied CD-ROM.