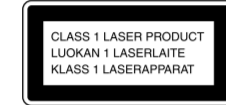


CMT-SPZ90DB

© 2006 Sony Corporation Printed in China
http://www.sony.net/



Except for customers in the U.S.A. and Canada



This appliance is classified as a CLASS 1 LASER product. This marking is located on the rear exterior.

European model only

Excessive sound pressure from earphones and headphones can cause hearing loss.

Notice for customers: the following information is only applicable to equipment sold in countries applying EU Directives

The manufacturer of this product is Sony Corporation, 1-7-1 Konan, Minato-ku, Tokyo, 108-0075 Japan. The Authorized Representative for EMC and product safety is Sony Deutschland GmbH, Hedelfinger Strasse 61, 70327 Stuttgart, Germany. For any service or guarantee matters please refer to the addresses given in separate service or guarantee documents.



Disposal of Old Electrical & Electronic Equipment (Applicable in the European Union and other European countries with separate collection systems)

This symbol on the product or on its packaging indicates that this product shall not be treated as household waste. Instead it shall be handed over to the applicable collection point for the recycling of electrical and electronic equipment. By ensuring this product is disposed of correctly, you will help prevent potential negative consequences for the environment and human health, which could otherwise be caused by inappropriate waste handling of this product. The recycling of materials will help to conserve natural resources. For more detailed information about recycling of this product, please contact your local Civic Office, your household waste disposal service or the shop where you purchased the product.

Applicable accessories: Remote commander

Note on DualDiscs

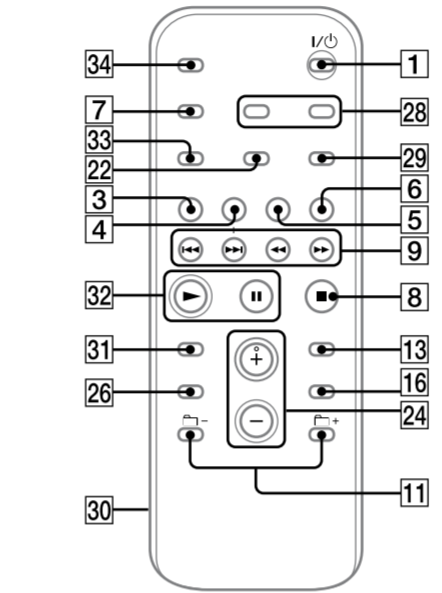
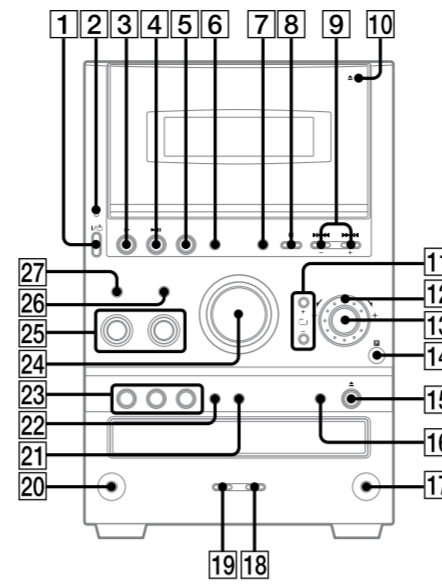
A DualDisc is a two sided disc product which mates DVD recorded material on one side with digital audio material on the other side. However, since the audio material side does not conform to the Compact Disc (CD) standard, playback on this product is not guaranteed.

Music discs encoded with copyright protection technologies

This product is designed to playback discs that conform to the Compact Disc (CD) standard. Recently, various music discs encoded with copyright protection technologies are marketed by some record companies. Please be aware that among those discs, there are some that do not conform to the CD standard and may not be playable by this product.

MPEG Layer-3 audio coding technology and patents licensed from Fraunhofer IIS and Thomson.

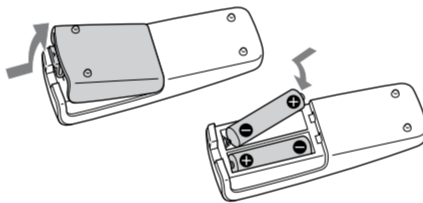
Basic Operations



Before using the system

To use the remote

Slide and remove the battery compartment lid 30, and insert the two supplied R6 (size AA) batteries, side first, matching the polarities shown below.



Notes on using the remote

- With normal use, the batteries should last for about six months.
- Do not mix an old battery with a new one or mix different types of batteries.
- If you do not use the remote for a long period of time, remove the batteries to avoid damage from battery leakage and corrosion.

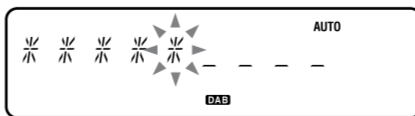
To set the clock

- 1 Turn on the system. Press I/⏻ (power) 1.
- 2 Select the clock set mode. Press CLOCK/TIMER SET 28 on the remote. If the current mode appears on the display, press ◀▶ 9 on the remote repeatedly to select "CLOCK SET" and then press ENTER 13 on the remote.
- 3 Set the time. Press ◀▶▶▶ 9 on the remote repeatedly to set the hour, and then press ENTER 13 on the remote. Use the same procedure to set the minute. The clock settings are lost when you disconnect the power cord or if a power failure occurs.

To run the DAB Automatic Scan

When you turn on the system for the first time after you purchase the system, DAB Automatic Scan starts automatically and creates a list of available services. If you want to run the DAB Automatic Scan again, perform the procedure below.

- 1 Press DAB AUTO SCAN 21 on the unit. "AUTO SCAN" and "PUSH ENTR" appear.
 - 2 Press PUSH ENTER on the unit (or ENTER on the remote) 13.
- Scanning begins. The scanning progress is indicated by advancing asterisks. Depending on the DAB services available in your area, scanning may take a few minutes.



When scanning is complete, a list of available services is created.

Notes

- If your country or region does not support DAB broadcast, "NO SERV" appears.
- Do not press any button on the unit or the remote during DAB Automatic Scan. Scanning is interrupted and service list may not be created properly. In this case, run the DAB Automatic Scan again.
- If you move to another area, repeat this procedure to store the stations for your new area.

- This procedure clears all previously stored presets.
- Before unplugging the DAB antenna, make sure the system is turned off to preserve your own DAB settings.
- This tuner does not support data services.

Selecting a music source

Press the following buttons (or press FUNCTION 6) repeatedly.

To select	Press
CD	CD 4 on the remote.
Tuner	TUNER/BAND 5.
Tape	TAPE 3 on the remote.
Component (connected using an audio cord)	FUNCTION 6 repeatedly until "AUDIO IN" appears.

Adjusting the sound

To adjust the volume

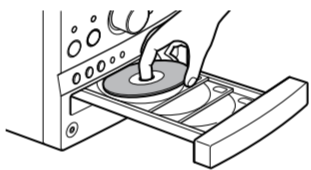
Press VOLUME +/- on the remote (or turn the VOLUME control on the unit) 24.

To add a sound effect

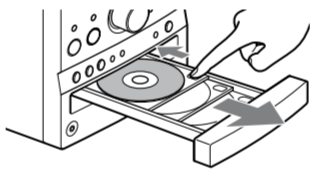
To	Press
Generate a more dynamic sound (Dynamic Sound Generator X-tra)	DSGX 27 on the unit.
Set the sound effect	EQ 26 repeatedly to select "BASS" or "TREBLE," and then press +/- 9 on the remote (or EQ LEVEL +/- 25 on the unit) repeatedly to adjust the level.

Playing a CD/MP3 disc

- 1 Select the CD function. Press CD 4 on the remote.
- 2 Place a disc. Press ▲ (CD open/close) 15 on the unit, and place a disc with the label side up on the disc tray.



To insert additional discs, slide the disc tray with your finger as shown below.



To close the disc tray, press ▲ (CD open/close) 15 on the unit again.

Do not force the disc tray closed with your finger, as this may damage the unit.

- 3 Start playback. Press ▶ (play) 32 on the remote (or CD/▶ 11 (play/pause) 4 on the unit).

To	Press
Pause playback	(pause) 32 on the remote (or CD/▶ 11 (play/pause) 4 on the unit). To resume play, press the button again.
Stop playback	■ (stop) 8.
Select a folder on an MP3 disc	+/- (select folder) 11. Or turn the jog dial 12 on the unit and press PUSH ENTER 13 on the unit during playback until "FOLDER" appears, and then press PUSH ENTER 13 on the unit to select the desired folder).
Select a track or file	◀▶▶▶ (go back/go forward) 9. Or turn the jog dial 12 on the unit and press PUSH ENTER 13 on the unit. To cancel, press CANCEL 8 on the unit.
Find a point in a track or file	Hold down ◀▶▶▶ (rewind/fast forward) 9 during playback, and release the button at the desired point.
Select Repeat Play	REPEAT 29 on the remote repeatedly until "REP" or "REPI" appears.
Select a disc	Press DISC SKIP 16 on the remote (or DISC 1 - 3 23 or DISC SKIP 16 (in stop mode) on the unit).
Switch to CD function from another source	Press DISC 1 - 3 23 on the unit (Automatic Source Selection).
Exchange other discs while playing	Press EX-CHANGE 16 on the unit.

To change the play mode

Press PLAY MODE 22 repeatedly while the player is stopped. You can select normal play ("ALL DISCS" for all discs, "1DISC" for a disc, or "▶" for all MP3 files in the folder on the disc), shuffle play ("ALL DISCS SHUF", "1DISC SHUF", or "▶ SHUF"), or program play ("PGM").

* When playing a CD-DA disc, ▶ (SHUF) Play performs the same operation as 1DISC (SHUF) Play.

Note on the jog dial

Only the first 6 characters are displayed when performing the folder search, track search, or file search.

Notes on Repeat Play

- All tracks or files on a disc are played repeatedly up to five times.
- You cannot select "REP" and "ALL DISCS SHUF" at the same time.
- "REP 1" indicates that a single track or file is repeated until you stop it.

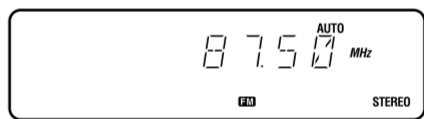
Notes on playing MP3 discs

- Do not save other types of files or unnecessary folders on a disc that has MP3 files.
- Folders that have no MP3 files are skipped.
- MP3 files are played back in the order that they are recorded onto the disc.
- The system can only play MP3 files that have a file extension of ".MP3".
- If there are files on the disc that have the ".MP3" file extension, but that are not MP3 files, the unit may produce noise or may malfunction.
- The maximum number of:
 - folders is 255 (including the root folder).
 - MP3 files is 511.
 - MP3 files and folders that can be contained on a single disc is 512.
 - folder levels (the tree structure of files) is 8.
- Compatibility with all MP3 encoding/writing software, recording device, and recording media cannot be guaranteed. Incompatible MP3 discs may produce noise or interrupted audio or may not play at all.
- Notes on playing multisession discs
 - If the disc begins with a CD-DA (or MP3) session, it is recognized as a CD-DA (or MP3) disc, and other sessions are not played back.
 - A disc with a mixed CD format is recognized as a CD-DA (audio) disc.

Listening to the radio

Before you can receive DAB, you must complete the DAB Automatic Scan procedure (see "Before using the system").

- 1 Select "DAB" or "FM." Press TUNER/BAND 5 repeatedly.
- 2 Select the tuning mode. Press TUNING MODE 22 repeatedly until "AUTO" appears.
- 3 Tune in the desired station. Press +/- on the remote (or TUNING +/- on the unit) 9. Scanning stops automatically when a station is tuned in, and then "TUNED" (DAB only) and "STEREO" (for stereo programs) appear. When you tune in a DAB station or an FM station that provides RDS services, the service name or station name appears on the display.



To stop automatic scanning (FM band only)

Press ■ (stop) 8.

To tune in a station with a weak signal (FM band only)

If the scanning does not stop, press TUNING MODE 22 repeatedly until "AUTO" and "PRESET" disappear, and then press +/- on the remote (or TUNING +/- on the unit) 9 repeatedly to tune in the desired station.

Notes on listening to DAB stations

- When tuning in a DAB station, it may take a few seconds before you hear any sound.
- Primary service is automatically received when secondary service ends.

Playing a tape

- 1 Select the tape function. Press TAPE 3 on the remote.
- 2 Insert a tape. Press ▲ PUSH OPEN/CLOSE 10 on the unit, and insert the TYPE I (normal) tape into the cassette holder with the side you want to play facing forward. Make sure there is no slack in the tape to avoid damaging the tape or the tape deck. Press ▲ PUSH OPEN/CLOSE 10 on the unit again to close the cassette holder.
- 3 Start playback. Press ▶ (play) 32 on the remote (or TAPE/▶ 11 (play/pause) 3 on the unit).

To	Press
Pause playback	(pause) 32 on the remote (or TAPE/▶ 11 (play/pause) 3 on the unit). To resume play, press the button again.
Stop playback	■ (stop) 8.
Rewind or fast forward	◀▶▶▶ (rewind/fast forward) 9.

WARNING

To reduce the risk of fire or electric shock, do not expose this apparatus to rain or moisture.

To reduce the risk of fire, do not cover the ventilation of the apparatus with newspapers, tablecloths, curtains, etc. And do not place lighted candles on the apparatus.

To reduce the risk of fire or electric shock, do not place objects filled with liquids, such as vases, on the apparatus.

Connect the unit to an easily accessible AC outlet. Should you notice an abnormality in the unit, disconnect the main plug from the AC outlet immediately.

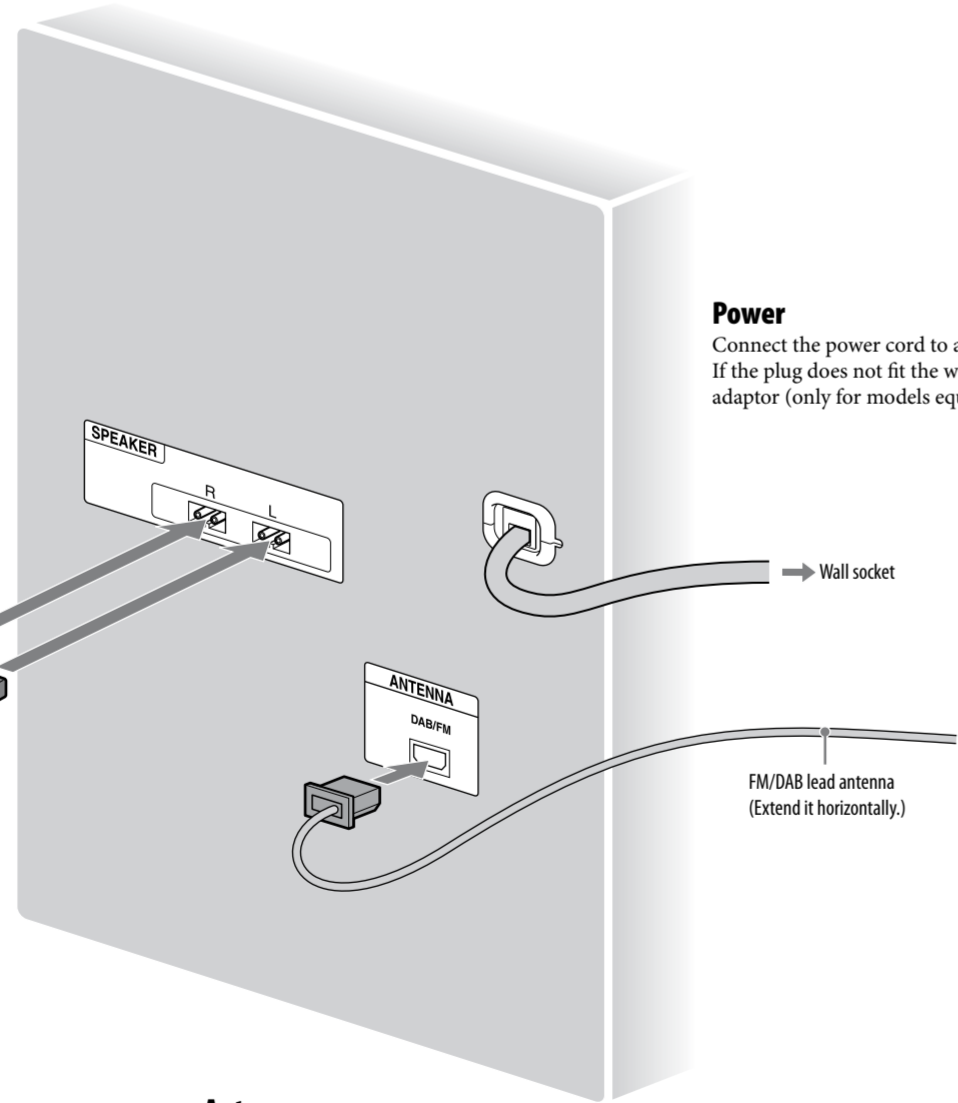
Do not install the appliance in a confined space, such as a bookcase or built-in cabinet.

Do not expose batteries or apparatus with battery-installed to excessive heat such as sunshine, fire or the like.

Hooking up the system securely

When carrying this system

- 1 Remove all discs to protect the CD mechanism.
- 2 Press CD 4 on the remote to select the CD function.
- 3 Hold down PLAY MODE/TUNING MODE 22, and press DISC 1 23 until "LOCK" appears.
- 4 Unplug the power cord.



Power

Connect the power cord to a wall socket. If the plug does not fit the wall socket, detach the supplied plug adaptor (only for models equipped with an adaptor).

Speakers

Right speaker
Left speaker

Antennas

Find a location and an orientation that provide good reception, and then set up the antenna. Keep the antenna away from the speaker cords and the power cord to avoid picking up noise.

Before unplugging the FM/DAB antenna, make sure the system is turned off to preserve your own FM and DAB settings.

