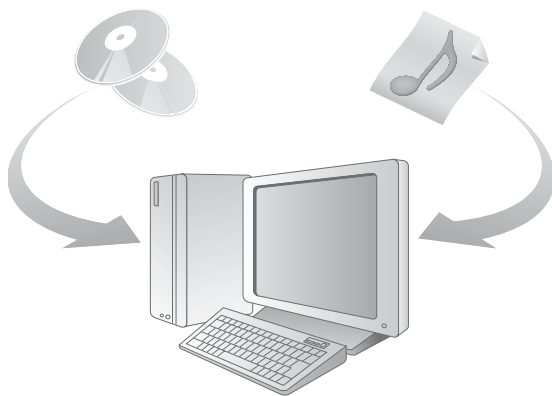



# *SonicStage* Ver. 2.1

---

Installation/Operating Guide



- Copyright laws prohibit reproducing the software or the manual accompanying it in whole or in part, or renting the software without the permission of the copyright holder.
- In no event will SONY be liable for any financial damage, or loss of profits, including claims made by third parties, arising out of the use of the software.
- In the event a problem occurs with this software as a result of defective manufacturing, SONY will replace it. However, SONY bears no other responsibility.
- The software cannot be used with equipment other than that which is so designated.
- Please note that, due to continued efforts to improve quality, the software specifications may be changed without notice.
- The ability to display the languages on your SonicStage will depend on the installed OS on your PC. For better results, please ensure that the installed OS is compatible with the desired language you want to display.
  - We do not guarantee all the languages will be able to be displayed properly on your SonicStage.
  - User-created characters and some special characters may not be displayed.

- SonicStage and SonicStage logo are trademarks or registered trademarks of Sony Corporation.
- OpenMG, Net MD, ATRAC, ATRAC3, ATRAC3plus and their logos are trademarks of Sony Corporation.
- “WALKMAN” is a registered trademark of Sony Corporation to represent Headphone Stereo products.  is a trademark of Sony Corporation.
- Microsoft, Windows, Windows NT and Windows Media are trademarks or registered trademarks of Microsoft Corporation in the United States and /or other countries.
- IBM and PC/AT are registered trademarks of International Business Machines Corporation.
- Macintosh is a trademark of Apple Computer, Inc. in the United States and/or other countries.
- Pentium is a trademark or a registered trademark of Intel Corporation.
- All other trademarks and registered trademarks are trademarks or registered trademarks of their respective holders. <sup>TM</sup> and ® marks are omitted in this manual.
- CD and music-related data from Gracenote, Inc., copyright © 2000-2003 Gracenote. Gracenote CDDDB® Client software, copyright 2000-2003 Gracenote. This product and service may practice one or more of the following U.S. Patents: #5,987,525; #6,061,680; #6,154,773, #6,161,132, #6,230,192, #6,230,207, #6,240,459, #6,330,593, and other patents issued or pending.  
Gracenote and CDDDB are registered trademarks of Gracenote. The Gracenote logo and logotype, the Gracenote CDDDB logo, and the “Powered by Gracenote” logo are trademarks of Gracenote.

# Table of Contents

For operating procedures of the CD player, see the supplied Operating Instructions.

---

What you can do with SonicStage .....	4
Basic operational flow using a CD Walkman .....	4

---

Installing .....	5
Providing the required system environment .....	5
System requirements .....	5
Installing the software onto your computer .....	6

---

Using SonicStage .....	8
Importing audio data .....	8
Recording music data on a CD-R/CD-RW .....	10
Using SonicStage Help .....	12
To display SonicStage Help .....	12
Understanding SonicStage Help .....	13
Searching for a word inside an explanation .....	13
Referring to SonicStage Help .....	14
Importing audio data to the computer .....	14
Listening to audio data on the computer .....	14
Managing and editing imported tracks .....	14
Backing up audio data .....	15
Troubleshooting .....	15
When you want to know .....	15

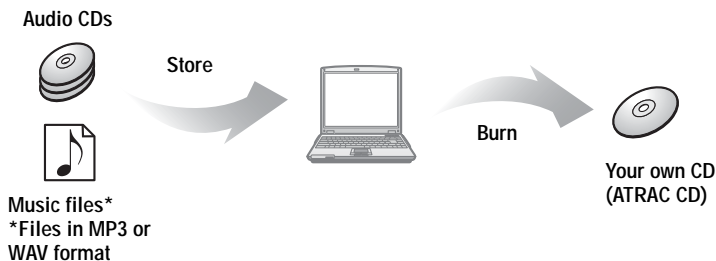
---

Other information .....	16
Uninstalling SonicStage .....	16
On copyright protection .....	17
Troubleshooting .....	18
The software cannot be installed onto your computer .....	19

- The displayed items in the illustrations that appear in this manual may differ from the actual items displayed by the software.
- Explanations in this manual assume familiarity with basic Windows operations. For details on the use of your computer and the operating system, please refer to the respective manuals.

# What you can do with SonicStage

Using SonicStage, you can store music data imported from audio CDs or music files on your PC, and burn your own CDs (ATRAC CD).



## Basic operational flow using a CD Walkman

Providing the required system environment (page 5)



Installing the software onto your computer (page 6)



Importing audio data (page 8)



Recording music data on a CD-R/CD-RW (page 10)



Inserting the CD-R/CD-RW you burnt into a device compatible with ATRAC CDs and listening to it. (See the Operating Instructions of the device.)

## Providing the required system environment

### System requirements

The following system environment is required in order to use the SonicStage Ver. 2.1.

Computer	<p>IBM PC/AT or Compatible</p> <ul style="list-style-type: none"><li>• CPU: Pentium II 400 MHz or higher (Pentium III 450 MHz or higher is recommended.)</li><li>• Hard disk drive space: 200 MB or more (1.5 GB or more is recommended) (The amount space will vary according to Windows version and the number of music files stored on the hard disk.)</li><li>• RAM: 64 MB or more (128 MB or more is recommended)</li></ul> <p>Others</p> <ul style="list-style-type: none"><li>• CD drive (capable of digital playback by WDM)</li><li>• Sound Board</li><li>• USB port (supports USB (previously USB 1.1))</li></ul>
Operating System	Factory installed: Windows XP Media Center Edition 2004/Windows XP Media Center Edition/Windows XP Professional/Windows XP Home Edition/ Windows 2000 Professional/Windows Millennium Edition/Windows 98 Second Edition
Display	High Color (16 bit) or higher, 800 × 600 dots or better (1024 × 768 dots or better is recommended)
Others	<ul style="list-style-type: none"><li>• Internet access: for Web registration, EMD services and CDDB</li><li>• Windows Media Player (version 7.0 or higher) installed for playing WMA files</li></ul>

This software is not supported by the following environments:

- OSs other than the indicated above
- Personally constructed PCs or operating systems
- An environment that is an upgrade of the original manufacturer-installed operating system
- Multi-boot environment
- Multi-monitor environment
- Macintosh

#### Notes

- We do not ensure trouble-free operation on all computers that satisfy the system requirements.
- The NTFS format of Windows XP/Windows 2000 Professional can be used only with the standard (factory) settings.
- We do not ensure trouble-free operation of the system suspend, sleep, or hibernation function on all computers.
- For Windows 2000 Professional users, install Service Pack 3 or later before using the software.

---

# Installing the software onto your computer

## Before installing the software

- Make sure to close any virus-check software, as such software usually demands a large amount of system resources.
- Make sure to install the software with the supplied CD-ROM.
  - If OpenMG Jukebox or SonicStage is installed already, the previous software will be overwritten by the new version. The new version retains the functions of the older version, but with new functions added.
  - If SonicStage Premium, SonicStage Simple Burner or Net MD Simple Burner is installed already, the previous software will co-exist with the new version.
  - You will still be able to use music data registered by an older software version even after SonicStage has been installed. As a precaution, we recommend that you back up your music data. To back up the data, refer to [Backing Up My Library] – [Backing Up Data to a Disk] on SonicStage Help.

---

1 Turn on your computer and start up Windows.

---

2 Insert the supplied CD-ROM into the CD drive of your computer.

The setup program starts up automatically and the installation window appears. Depending on the region, a window may appear asking you to select your country. In this case, follow the displayed instructions.

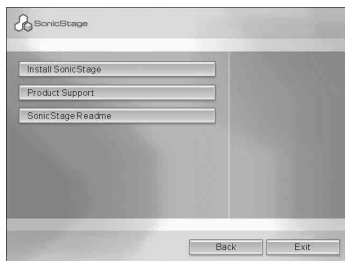
---

3 Click the region in which you will use SonicStage software.



---

4 Click [Install SonicStage] and then follow the displayed instructions.



Read the instructions carefully. Depending on your region, the buttons other than [Install SonicStage] may differ from those in the illustration left. The installation may take 20 to 30 minutes, depending on your system environment. Make sure to restart your computer only after the installation is completed.

---

Was the installation successful?


If any trouble occurs during the installation, see “Troubleshooting” (page 18).

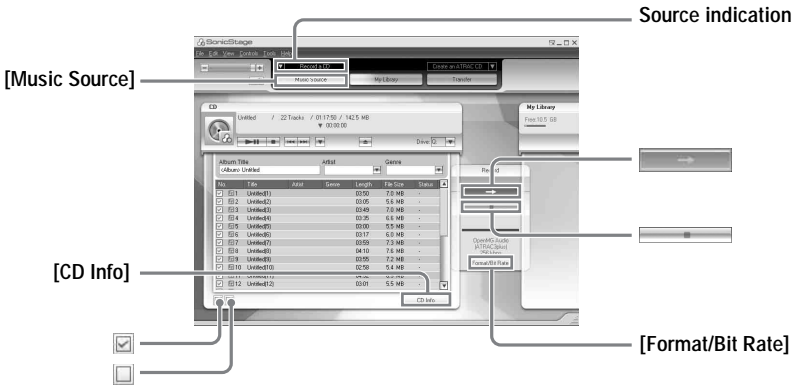
## Importing audio data

This section explains how to record and store audio data from an audio CD to My Library of SonicStage on the hard disk drive of your computer.

You can record or import music from other sources such as your computer's hard disk. Refer to SonicStage Help for details.

### Notes

- Only audio CDs with a  mark can be used with SonicStage.
- We do not guarantee normal operation in the case of the copy-control CDs.




## 1 Start up SonicStage.

Click [Start] – [All Programs]\* – [SonicStage] – [SonicStage].

\* [Programs] in the case of Windows 2000 Professional/Windows Millennium Edition/Windows 98 Second Edition

SonicStage starts up and the main window appears.



You can also start SonicStage with double click  ([SonicStage] icon) on the desktop.

## 2 Insert the audio CD that you want to record into the CD drive of your computer.

The source indication in the top-left of the display changes to [Record a CD].

## 3 Click [Music Source].

The contents of the audio CD appear in the music source list (on the left side of the screen).



---

4 If necessary, click  to uncheck tracks you do not want to record.

If you unchecked a box by mistake, click it again to restore the check.

To check all boxes, click .

To uncheck all boxes, click .

---

5 If necessary, change the format and bit rate for audio CD recording.

When you click [Format/Bit Rate] on the right side of the screen, “CD Recording Format [My Library]” dialog box will appear. The dialog box will ask you to select the format and bit rate for recording the audio CD.

---

6 Click .

The recording of the tracks selected in step 4 starts.

---

To stop recording

Click .

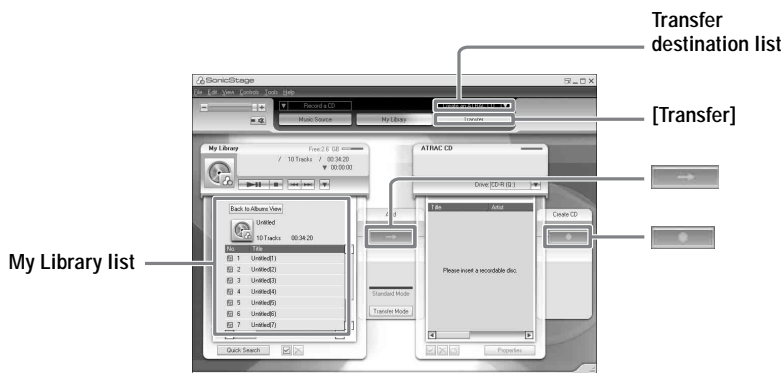


If CD information such as album title, artist name, and track names could not be obtained automatically, click [CD Info] on the right side of the screen. When you do this, your computer must be connected to the Internet.

---

## Recording music data on a CD-R/CD-RW

You can record tracks in the My Library of SonicStage on a CD-R/CD-RW.



- 
- 1 Select “Create an ATRAC CD” from the transfer destination list in the upper right of the screen, then click [Transfer] in the upper right of the screen.


---

  - 2 Insert a brand-new CD-R or CD-RW into the CD drive of your computer. Use a 650 MB or 700 MB CD-R/CD-RW. If you use other CD-Rs/CD-RWs, your music data may not be recorded properly.

---

  - 3 Click an album or a track you want to record in the My Library on the left side of the screen.  
If you double click an album, the list of tracks in the album appears and you can select a track from the list.

---

  - 4 Click .
- The albums or tracks you have selected appear on the right side of the screen (the CD-R/CD-RW side) as a recording image (items to be burnt).

---

5 Click  .

The [Writing settings] dialog box appears. Set the writing speed appropriate to the CD-R/CD-RW, etc.

---

6 Click [Start].

Recording starts.

When recording is completed, an appropriate ending message appears.

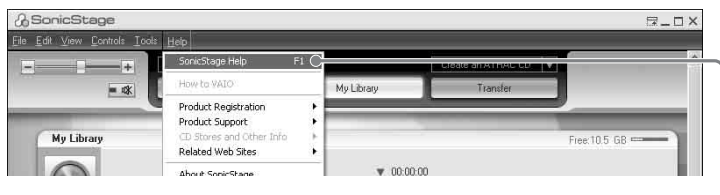
---

## Using SonicStage Help

SonicStage Help provides further details on how to use SonicStage. SonicStage Help allows you to search easily for information from a list of operations, such as “Importing Tracks” or “Transferring Tracks”, or from large list of keywords, or by typing in words that might lead you to the appropriate explanations.

### To display SonicStage Help

Click [Help] - [SonicStage Help] while SonicStage is running.



[SonicStage Help]



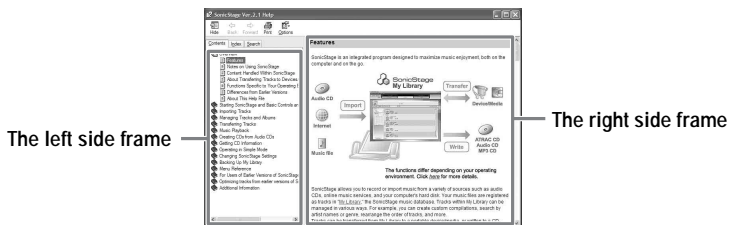
You can display SonicStage Help by selecting the following:  
[Start] – [All Programs]\* – [SonicStage] – [SonicStage Help].

\* [Programs] in the case of Windows 2000 Professional/Windows Millennium Edition/Windows 98 Second Edition

### Notes

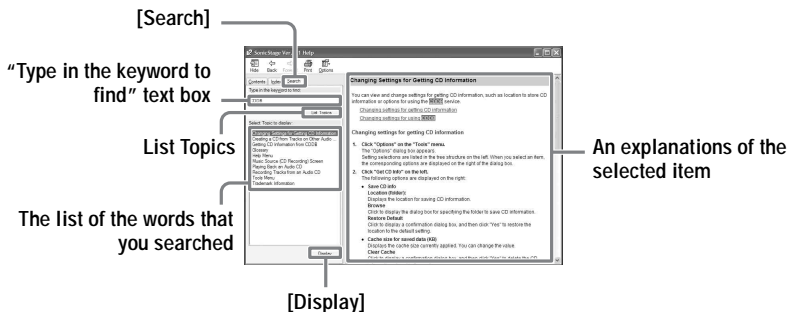
- In SonicStage Help, “Device/Media” is the general term for the external device such as the MD Walkman, the Network Walkman, and the CD Walkman.
- Follow the instructions of your internet provider regarding such things as recommended system environment when using EMD services.

# Understanding SonicStage Help



- 1 Double click [Overview] in the left-side frame.
- 2 Click [About This Help File].  
The explanation will appear in the right-side frame.
- 3 Read the text.  
Scroll the display if necessary.  
Click underlined words to jump to their explanations.

# Searching for a word inside an explanation



- 1 Click [Search] to open the "Search" window.
- 2 Type in the words.
- 3 Click [List Topics].  
A list of the words that were searched is displayed.
- 4 Click to select the desired item among those displayed.
- 5 Click [Display].  
An explanation of the selected item is displayed.

---

## Referring to SonicStage Help

Click [Contents] on the left side of the Help window to view a list of items for each operation. Click on any items for details.

### Importing audio data to the computer

To	SonicStage Help
Import audio files on the computer in SonicStage	[Importing Tracks] – [Importing Music Files]

### Listening to audio data on the computer

To	SonicStage Help
Listen to audio data from the CD drive or My Library	[Music Playback] – [Playing Back an Audio CD] or [Playing Back a Track in My Library]

### Managing and editing imported tracks

To	SonicStage Help
Change information related to CD information downloading	[Changing SonicStage Settings] – [Changing Settings for Getting CD information]
Edit an album Delete the tracks	[Managing Tracks and Albums] – [Creating/Editing Albums]
Change the destination directly for track storage	[Changing SonicStage Settings] – [Changing the Location for Saving Recorded Files]

## Backing up audio data

We recommend you back up your music data as a precaution against hard disk crashes or computer replacement.

To	SonicStage Help
Back up audio data in My Library	[Backing Up My Library] – [Backing Up Data to a Disk]
Look up about SonicStage backup	[Backing Up My Library] – [FAQ-About SonicStage Backup Tool]

## Troubleshooting

To	SonicStage Help
Look up troubleshooting procedure	[Additional Information] – [Troubleshooting]

## When you want to know

To	SonicStage Help
Look up unknown words	[Additional Information] – [Glossary]
Look up the kinds of audio data that can be managed by SonicStage	[Overview] – [Install SonicStage]
Look up the kinds of functions that can be used with SonicStage	[Overview] – [Features]

---

### Uninstalling SonicStage

To uninstall SonicStage, follow the procedures below.

---

1 Click [Start]–[Control Panel]\*.

\* [Settings]–[Control Panel] in the case of Windows 2000 Professional/Windows Millennium Edition/Windows 98 Second Edition

---

2 Double-click [Add/Remove Programs].

---

3 Click [SonicStage 2.1.xx] in the “Currently Installed Programs” list, and then click [Change and Remove]\*.

Follow the displayed instruction and restart your computer. The uninstallation is completed when the computer has restarted.

\* [Change/Remove] in the case of Windows 2000 Professional, [Add/Remove] in the case of Windows Millennium Edition/Windows 98 Second Edition

---

#### Note

When you install SonicStage Ver. 2.1, OpenMG Secure Module 4.0 is installed at the same time. Do not delete OpenMG Secure Module 4.0 since it may be used by other software.



---

## On copyright protection

The OpenMG technology allows you to enjoy digital music, while maintaining the copyrights of its holders. SonicStage encrypts audio files in OpenMG format and stores them on the hard disk of your computer to prevent unauthorized distribution.

### Restrictions on audio content

High-quality digital audio content is widely available through music distribution services on the Internet. To protect the copyrights of its holders from unauthorized distribution, some audio content is distributed with certain restrictions on recording and playback. For example, the playback period or playback count for the data may be limited.

---

## Troubleshooting

Please refer to the following steps if you encounter a problem while using SonicStage.

- 1 Check the symptoms in this “Troubleshooting” section.
- 2 Check the symptoms in SonicStage Help when you use SonicStage.
- 3 If the problem cannot be solved after checking the above references, check the following table and then consult your nearest Sony dealer.

Computer <ul style="list-style-type: none"><li>• Manufacturer:</li><li>• Model:</li><li>• Type: Desktop type / Laptop type</li></ul>
Name of operating system:
RAM capacity:
Hard disk drive (containing SonicStage and audio data) <ul style="list-style-type: none"><li>• Capacity of the drive:</li><li>• Free space:</li></ul>
Version of the software <ul style="list-style-type: none"><li>• SonicStage Ver. 2.1<sup>1)</sup></li></ul>
Error Message (if one appears):
If an externally connected CD-ROM drive is used <ul style="list-style-type: none"><li>• Manufacturer:</li><li>• Model:</li><li>• Type: CD-ROM / CD-R/CD-RW / DVD-ROM / Other (                    )</li><li>• Type of connection to the computer: PC card / USB / IEEE1394 / Other (                    )</li></ul>
If another device with USB connection is used <ul style="list-style-type: none"><li>• Name of the device (or devices):</li></ul>

<sup>1)</sup> To check the SonicStage software version, go to [Help] - [About SonicStage] in the SonicStage window.

## The software cannot be installed onto your computer

Problem	Cause/Remedy
The installation was not successful.	You are using an OS that does not support this software. → See page 5 for more details. All windows applications are not closed. → If you start the installation while other programs are running, a malfunction may occur. This is especially true for programs that require large amounts of system resources, such as virus-check software. There is not enough hard disk space on your hard disk. → You need 200MB or more free space on your hard disk.
The installation appears to have stopped before it has completed.	Check for the appearance of an error message beneath the installation window. → Press the [Tab] key while holding down the [Alt] key. If an error message has appeared, press the [Enter] key. The installation will resume. If there is no message, the installation is still in progress. Wait a little while longer.
The progress bar on the display is not moving. The access lamp has not lit for a few minutes.	The installation is progressing normally. Please wait. The installation may take 30 minutes or more, depending on your CD drive or system environment.

<http://www.sony.net/>



Printed on 100 % recycled paper using VOC (Volatile Organic Compound)-free vegetable oil based ink.

Sony Corporation Printed in Malaysia



\* 2 3 4 5 2 3 2 1 1 \* (1)